



Bushey Shaw, Ashtead
Ashtead



In Excess of **£800,000**

Bushey Shaw

Ashtead, Ashtead

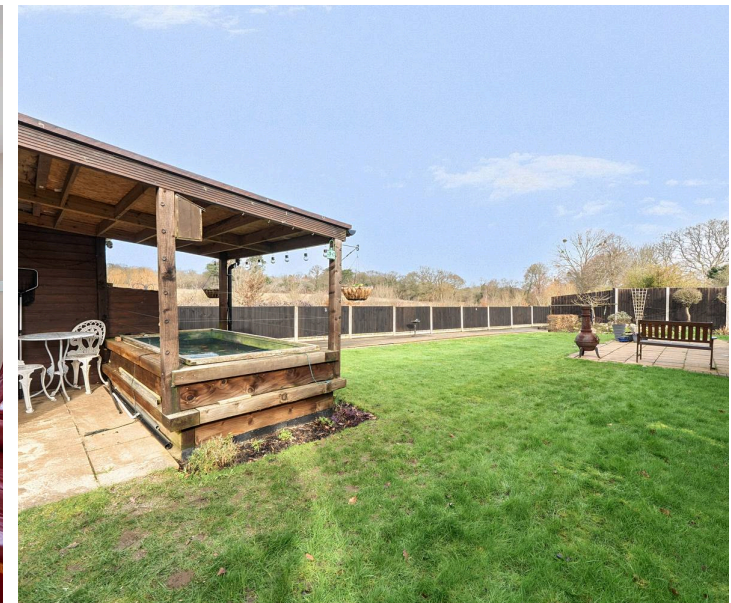
Council Tax band: F

Tenure: Freehold

EPC Energy Efficiency Rating: A

EPC Environmental Impact Rating: B

- EPC Rated A
- Detached Bungalow
- Spectacular Views of Ashtead Common
- Three Double Bedrooms
- Modern Kitchen
- Two Bathrooms
- Detached Garage
- Off Street Parking for Two Cars





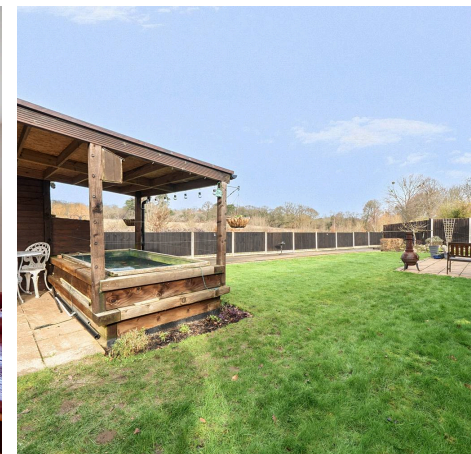
V&H Homes are proud to present this exceptional EPC "A" rated detached bungalow, set in an elevated position with breathtaking views across Ashted Common. Situated within a peaceful residential cul-de-sac, the property offers a rare sense of privacy and tranquillity while remaining within easy reach of Ashted's mainline station and the amenities of Craddocks Parade.

Immaculately presented throughout, a wide reception hall provides access to a stylish cloakroom/shower room and introduces the generous proportions of the home. The principal reception room is a beautifully light-filled space with glazed doors opening directly onto the garden terrace, perfectly framing the spectacular outlook. Ideal for both entertaining and everyday living, this room flows seamlessly into a contemporary kitchen fitted with sleek high-gloss units, premium work surfaces, and a full range of integrated appliances, with space for informal dining.

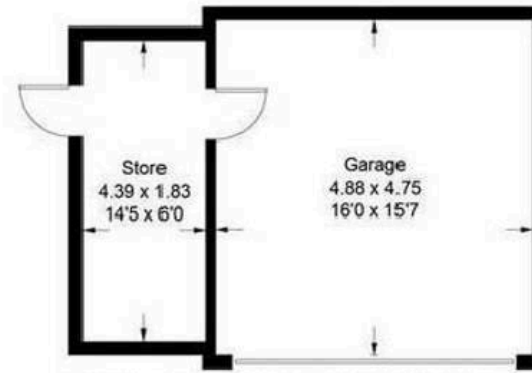
Modern enhancements include air conditioning to the main reception room and principal bedroom, CCTV security, and a smart home system. An extensive solar PV installation with grid-tied inverter generates summer income and virtually eliminates energy costs.

An inner hallway leads to three generous double bedrooms, two of which enjoy dual aspects and sweeping views across the common. These are served by a well-appointed family bathroom.

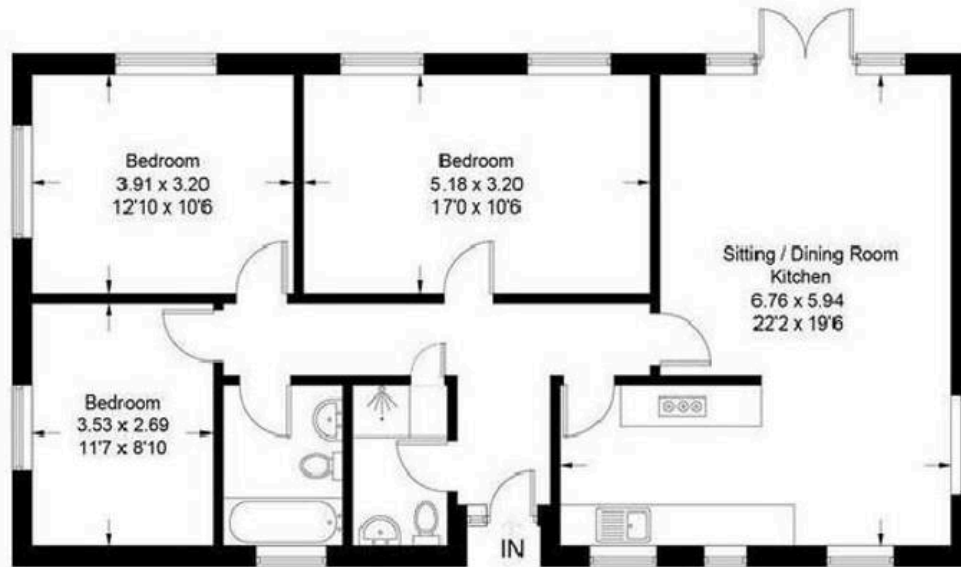
The rear garden is a particular highlight, mainly laid to lawn with a paved terrace for outdoor entertaining, greenhouse, insulated workshop, and additional store. Side access leads to an attractive front garden enclosed by mature hedging and secure gates.



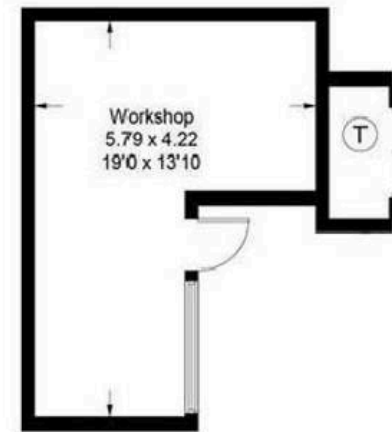
Approximate Gross Internal Area = 94.2 sq m / 1014 sq ft
Outbuildings = 60.4 sq m / 650 sq ft
Total = 154.6 sq m / 1664 sq ft



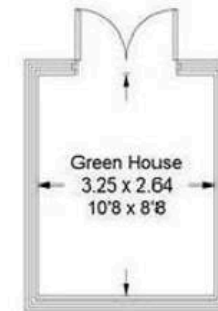
(Not Shown In Actual Location / Orientation)



Ground Floor



(Not Shown In Actual Location / Orientation)



(Not Shown In Actual Location / Orientation)

This plan is for layout guidance only. Not drawn to scale unless stated. Windows and door openings are approximate. Whilst every care is taken in the preparation of this plan, please check all dimensions, shapes and compass bearings before making decisions reliant upon them.