

Caledonian Road, N7

£495,000

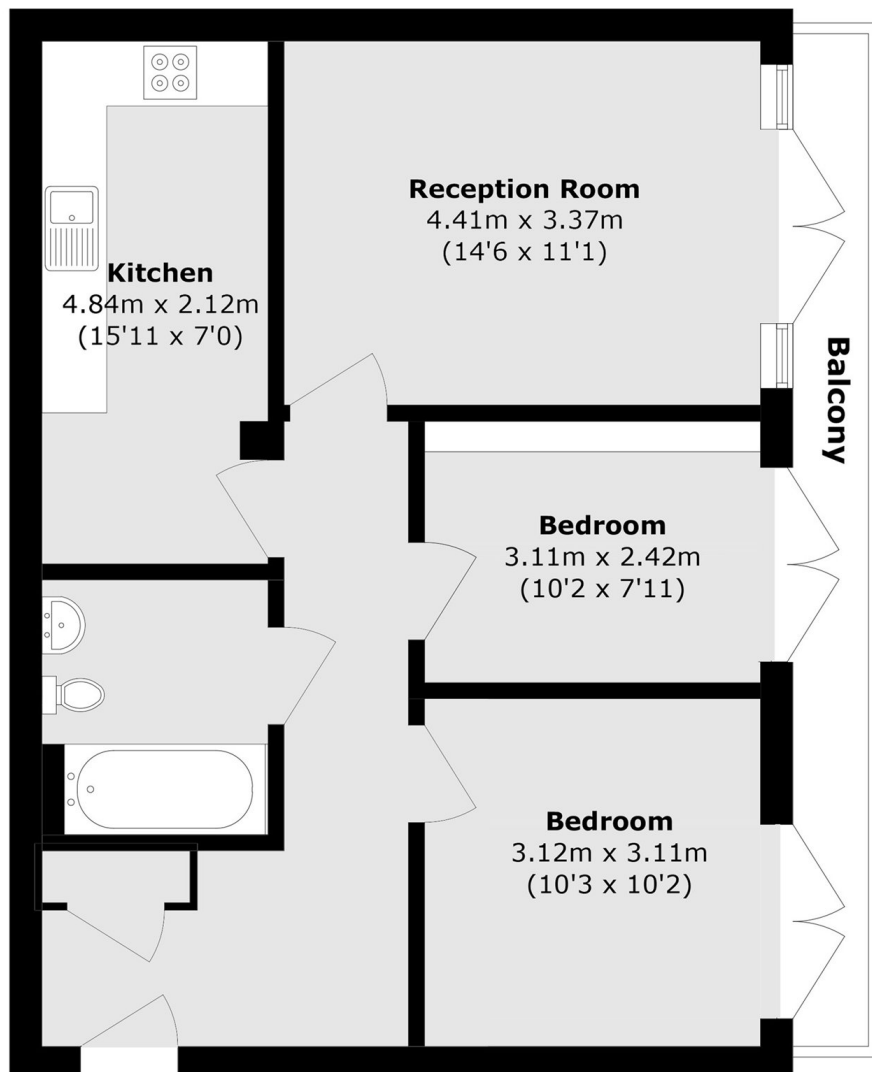
A well presented two double bedroom flat on the second floor of this modern development. There is a spacious living room, large eat in kitchen, two equal sized bedrooms and a balcony with great views accessed from the living room and bedrooms.

With Caledonian Road tube station (Piccadilly line) just across the road this property is ideally located for transport links to Kings Cross, the West End and the City. Paradise Park, Caledonian Park and Market Road Gardens are all within easy reach for green space.

Features

- Two Double Bedrooms
- Second Floor
- Private Balcony
- Lift Access
- Modern Development

Caledonian Road, London, N7



Total area (approx.): 61.9 sq. m (666.2 sq. ft)

Balcony area (approx.): 6.5 sq. m (69.9 sq. ft)