



# Weatherhill Road, Smallfield

£675,000





“

Built by a locally renowned developer known for their attention to detail and high-quality finish, each home at The Forge reflects a strong track record of delivering thoughtfully designed properties that combine style, practicality, and craftsmanship. Previous developments have been praised for their clean, contemporary interiors and lasting build quality — and The Forge is no exception. From the carefully selected materials to the modern specification throughout, these homes are a testament to the developer’s commitment to creating spaces that stand the test of time.

”



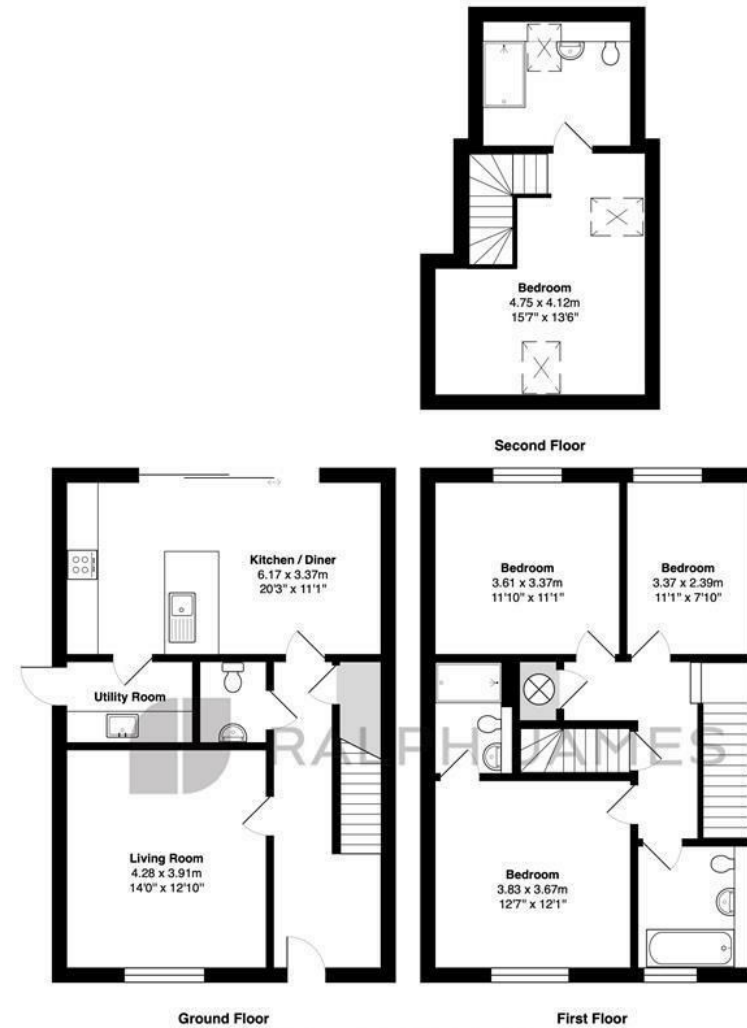
A boutique collection of just six detached homes on the desirable Weatherhill Road, blending timeless redbrick charm with a sleek, modern interior finish.

Ranging from three to four bedrooms and priced from £550,000, each home at The Forge offers spacious layouts ideal for family life, working from home, or downsizing in style. A contemporary minimalist finish throughout, including quartz worktops in thoughtfully designed kitchens, open-plan living and light-filled spaces.

Positioned in the heart of the Surrey countryside, Smallfield (RH6) is a charming village surrounded by rolling fields and scenic walking routes, offering a peaceful yet well-connected lifestyle. Just a 10-minute drive from Horley's mainline station—with direct trains into London—it's ideal for commuters seeking a quieter pace without sacrificing convenience.

# Need to know

- A boutique collection of just six detached new homes in the sought-after village of Smallfield.
- Move in ready - reserve a plot today!
- 0.28 acre plot, situated at the back of the development with a large garden + woodland area.
- Contemporary kitchen / diner that features sleek quartz worktops and integrated appliances.
- Open-plan living areas create bright, sociable spaces perfect for family life or entertaining.
- Ideal for families, home workers, and downsizers seeking style, space, and convenience.
- Two allocated parking space with each home & an electric car charging point.
- Traditional redbrick exteriors combine timeless kerb appeal.
- Air source heat pump ensuring an energy efficient home.
- High specification finish with new build Warranty.



## Interested?

redhill@ralphjames.co.uk  
01737 765 555

1

ralphjames.co.uk

The Forge, Weatherhill Road, Smallfield

Total Area: 128.0 m<sup>2</sup> ... 1378 ft<sup>2</sup>

FOR ILLUSTRATIVE PURPOSES ONLY.

Whilst every attempt has been made to ensure the accuracy of the floor plan shown, all measurements, positioning, fixtures, features, fittings and any other data shown are an approximate interpretation for illustrative purposes only and are not to scale.

No responsibility is taken for any error, omission, miss-statement or use of data shown.

The above statement applies to both 'Still Moving London LTD' and the Company or individual displaying this floor plan.

Unauthorised reproduction prohibited.

© Still Moving London LTD (www.stillmoving.london)

 RALPH JAMES