



Living  
made  
better

Roma Corte  
Lewisham, SE13 7GP



Offers In Excess Of £300,000

# Roma Corte, Lewisham, SE13 7GP

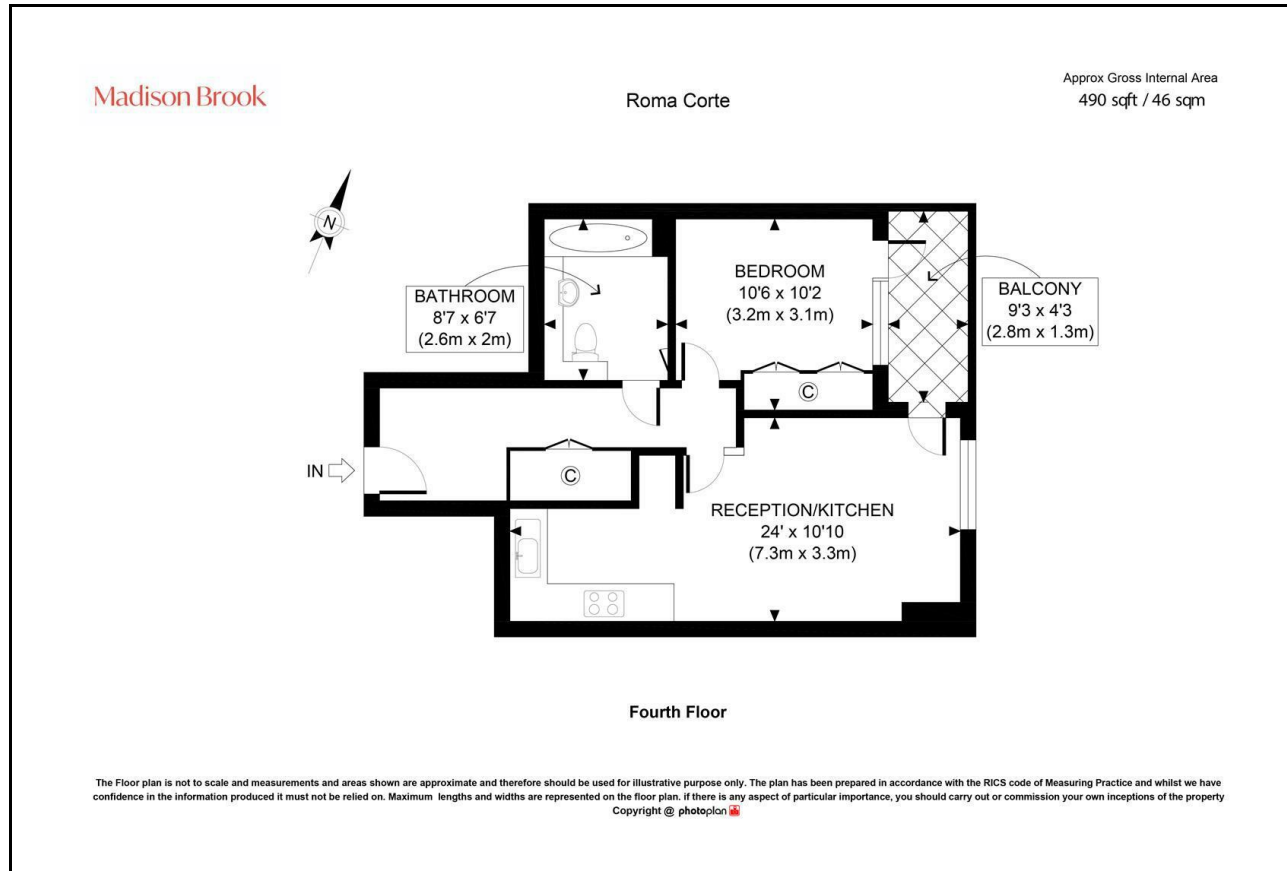
Madison Brook

## Property Summary

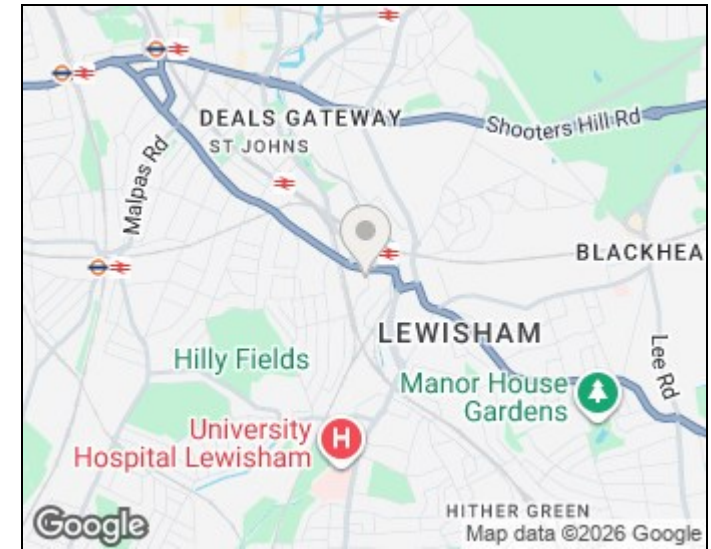
A modern one-bedroom apartment situated on the fourth floor of Roma Corte, offering open-plan living, a private balcony, and excellent resident facilities including a 24-hour concierge and communal terrace. Ideally located within walking distance of Lewisham Station and Shopping Centre, providing superb transport links into Canary Wharf and Central London.

Service charge: £2,260.92 pa | Ground rent: £450 pa | Lease: 111 years remaining

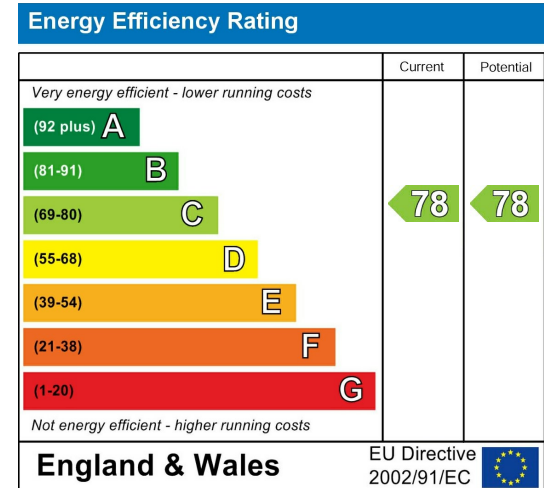
## Floorplan



## Area Map



## Energy Efficiency Graph



These particulars, whilst believed to be accurate are set out as a general outline only for guidance and do not constitute any part of an offer or contract. Intending purchasers should not rely on them as statements of representation of fact, but must satisfy themselves by inspection or otherwise as to their accuracy. No person in this firm's employment has the authority to make or give any representation or warranty in respect of the property.

43 Loampit Vale, Lewisham, London, SE13 7FT

Tel: 020 3946 6200 Email:

lewisham@madisonbrook.com

https://madisonbrook.com/