

3 Fisher Hill Way, Radyr

£580,000 Freehold

BEAUTIFULLY PRESENTED FIVE BEDROOM DETACHED DOUBLE GARAGE NO CHAIN An immaculately presented and spacious five bedroom detached family house in the sought after area of Radyr, being a short walk to Radyr village, Radyr Train station as well as delightful walks along the Taff Trail. Entrance leading to the large open plan ground floor kitchen/diner and family room, modern fitted kitchen with quartz worktops, utility room and cloakroom. To the first floor is a large lounge with bay window to side and a primary bedroom suite with walk through wardrobe and ensuite shower room. To the second floor are four further bedrooms, bedroom two with an ensuite shower room and there is a separate family bathroom. Gas central heating, double glazing. Fitted shutters to all front windows. Delightful paved patio rear garden with semi circular seating and decked relaxation. To the side is a timber built bar area. To the front is a paved patio. Double driveway with two car driveway to front. No chain. EPC Rating: D

Council Tax band: G

ENTRANCE

Approached via a composite entrance door leading to the ground floor open plan living and kitchen.

OPEN PLAN KITCHEN/DINING AND FAMILY ROOM

27' 6" x 21' 3" (8.37m x 6.47m)

An excellent open plan family area with ample space for family seating and dining area. Feature media wall with inset electric fire and tv recess fireplace. There is a modern fitted kitchen appointed along one side in cappuccino colour high gloss fronts beneath quartz worktop surfaces. Inset 1.5 bowl sink with worktop side drainer and boiling water tap. Integrated full size fridge and full size freezer. Integrated 'Bosch' oven and coffee machine above. Breakfast bar island with quartz worktop and an abundance of storage. Inset four ring 'Bosch' induction hob. Inset kitchen ceiling speakers. Porcelain tiled flooring throughout. Windows to front with fitted shutters. Two windows to sides and french doors to the delightful rear garden. Door to utility room and door to cloakroom.

CLOAKROOM

Quality white suite comprising low level wc, wash hand basin. Tiled splash back to half height. Tiled flooring. Extractor fan. Radiator.

UTILITY ROOM

7' 1" x 6' 9" (2.17m x 2.06m)

With units and quartz worktops to one side. Plumbing for washing machine with space for tumble dryer above. Airing cupboard housing the hot water cylinder. Wall mounted ideal gas central heating boiler. Tiled flooring. Door to rear garden. Radiator.

LANDING

Approached via a full turning staircase leading to the central landing area. Additional staircase to second flooring. Radiator. Doors to lounge and bedroom one.

LOUNGE

21' 3" x 13' 0" (6.47m x 3.97m)

An excellent sized primary reception with bay window to side and additional windows to front and rear. Fitted shutters to front window. Feature fireplace. Two radiators.

PRIMARY BEDROOM SUITE

15' 9" x 10' 0" (4.81m x 3.06m)

Large primary bedroom with two windows to front. Fitted shutters. Range of fitted wardrobes to one side. Laminate flooring. Two radiators. Archway opening to...

WALK THROUGH WARDROBE

Leading through to the ensuite with wardrobes to either

ENSUITE SHOWER ROOM

White suite comprising low level wc, wash hand basin, large shower cubicle with 'Mira' shower and sliding glass door. Wall tiling to splash back areas. Obscured glass window to rear. Electric shaver point. Extractor fan. Radiator

BEDROOM TWO

11' 4" x 11' 3" (3.45m x 3.44m)

Overlooking the entrance approach. Fitted shutters. Built in wardrobe to one side. Radiator. Door to ensuite.

ENSUITE SHOWER ROOM TWO

Quality white suite comprising low level wc, wash hand basin, large shower cubicle with chrome shower above. Full wall tiling. Tiled flooring. Obscured glass window to side. Extractor fan. Electric shaver point. Radiator.

BEDROOM THREE

11' 1" x 9' 3" (3.38m x 2.83m)

Window to front with fitted shutters, a further double bedroom. Built in wardrobe. Radiator.

BEDROOM FOUR

9' 11" x 9' 3" (3.01m x 2.83m)

Overlooking the attractive rear garden, a fourth double bedroom. Built out wardrobe. Radiator.

BEDROOM FIVE

7' 9" x 6' 3" (2.37m x 1.90m)

Aspect to front. Fitted shutter. Radiator.

FAMILY BATHROOM

White suite comprising low level wc, wash hand basin, panelled bath with shower mixer tap. Folding shower screen. Wall tiling to splash back areas. Extractor fan. Electric shaver point. Obscured glass window to rear. Radiator

ENTRANCE

Approached via a composite entrance door leading to the ground floor open plan living and kitchen.

OPEN PLAN KITCHEN/DINING AND FAMILY ROOM

27' 6" x 21' 3" (8.37m x 6.47m)

An excellent open plan family area with ample space for family seating and dining area. Feature media wall with inset electric fire and tv recess fireplace. There is a modern fitted kitchen appointed along one side in cappuccino colour high gloss fronts beneath quartz worktop surfaces. Inset 1.5 bowl sink with worktop side drainer and boiling water tap. Integrated full size fridge and full size freezer. Integrated 'Bosch' oven and coffee machine above. Breakfast bar island with quartz

ENSUITE SHOWER ROOM

White suite comprising low level wc, wash hand basin, large shower cubicle with 'Mira' shower and sliding glass door. Wall tiling to splash back areas. Obscured glass window to rear. Electric shaver point. Extractor fan. Radiator

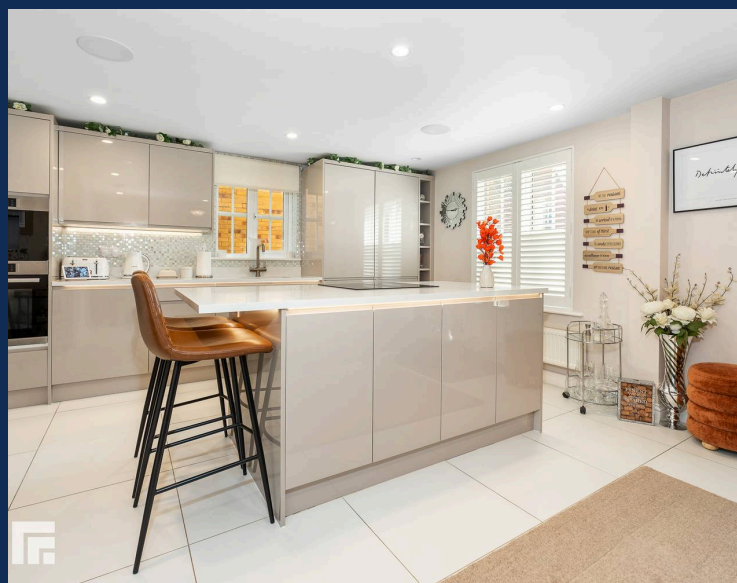
BEDROOM TWO

11' 4" x 11' 3" (3.45m x 3.44m)

Overlooking the entrance approach. Fitted shutters. Built in wardrobe to one side. Radiator. Door to ensuite.

ENSUITE SHOWER ROOM TWO

Quality white suite comprising low level wc, wash hand basin, large shower cubicle with chrome shower above.





REAR GARDEN

A sizeable and beautifully presented rear garden offering low maintenance with large patio area and rear decked relaxation area. Semi circular seating area with central stone gas fire pit connected from the mains. The garden is enclosed by timber fencing with timber gate to one side. To the other side is a large timber built bar with central glass roof, timber flooring, outside power points and outside lighting. This area also opens up to the front garden making maximum use of rear, side and front gardens.

FRONT GARDEN

Paved patio to front with inset hedgerow to front boundary. Side access to either side.

DOUBLE GARAGE

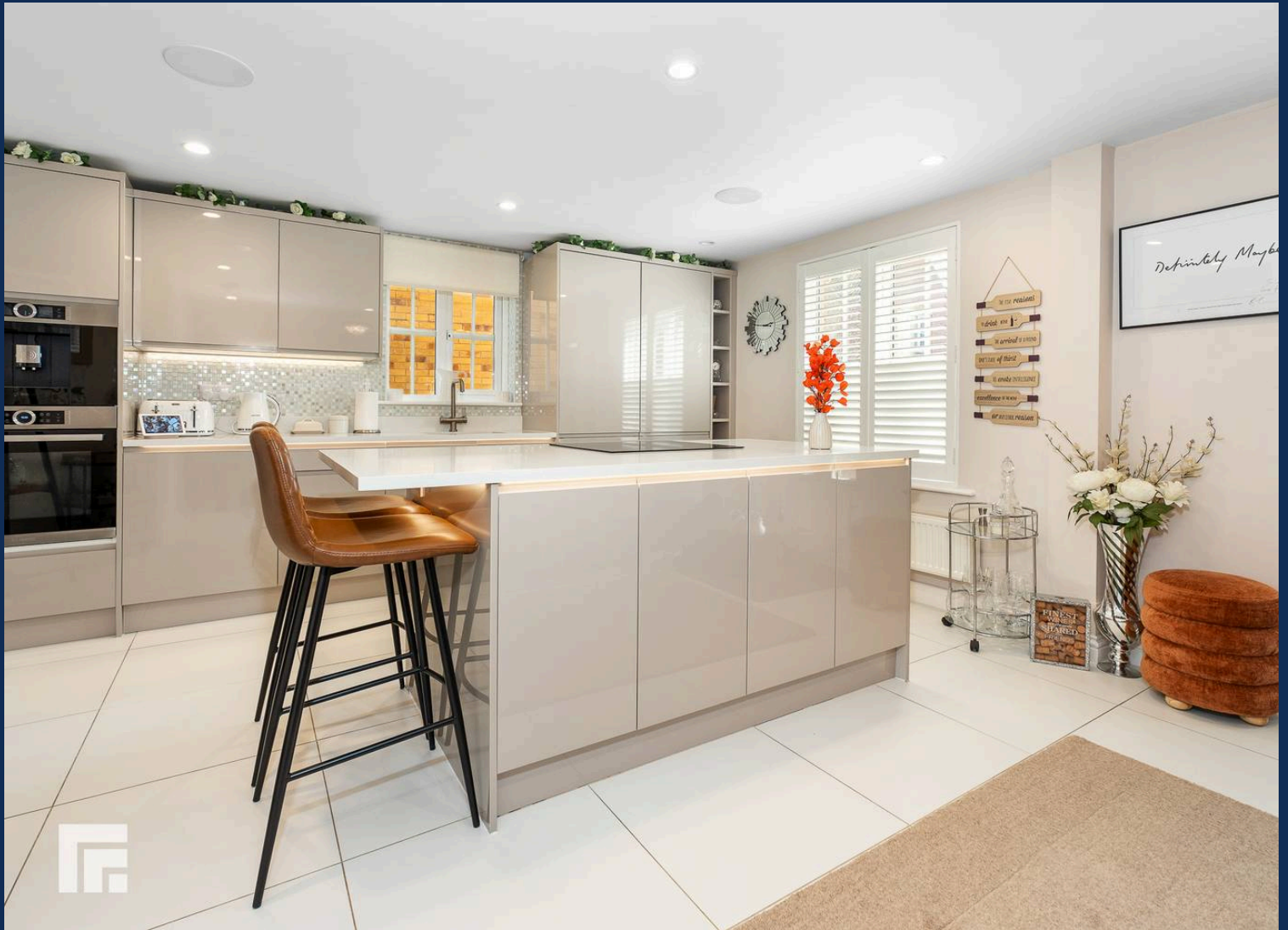
1 Parking Space

16' 8" x 16' 7" (5.09m x 5.07m) With twin up and over access doors. Power and lighting.

DRIVEWAY

2 Parking Spaces

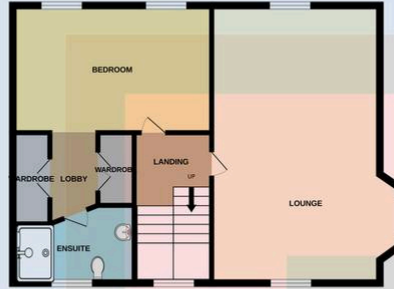
Two car side by side driveway leading to the double garage.



GROUND FLOOR
616 sq.ft. (57.2 sq.m.) approx.



1ST FLOOR
625 sq.ft. (58.0 sq.m.) approx.



2ND FLOOR
613 sq.ft. (56.9 sq.m.) approx.



TOTAL FLOOR AREA : 1853 sq.ft. (172.2 sq.m.) approx.

Whilst every attempt has been made to ensure the accuracy of the floorplan contained here, measurements of doors, windows, rooms and any other items are approximate and no responsibility is taken for any error, omission or mis-statement. This plan is for illustrative purposes only and should be used as such by any prospective purchaser. The services, systems and appliances shown have not been tested and no guarantee as to their operability or efficiency can be given.
Made with Metropix ©2025

RADYR 029 2084 2124

Radyr, 6 Station Road, Radyr, Cardiff, South Glamorgan, CF15 8AA



Important Notice: These particulars are prepared for guidance only and do not form whole or any part of any offer or contract. Whilst the particulars are given in good faith, they are not to be relied upon as being a statement or representation of fact. They are made without responsibility on the part of MGY Ltd or Vendor/lessor and the prospective purchaser/lessee should satisfy themselves by inspection or otherwise as to their accuracy. Neither MGY Ltd nor anyone in their employ, or the vendor/lessor, imply, make or give any representation/warranty whatsoever in relation to this property.

The services of our recommended mortgage brokers and solicitors may be beneficial. While a referral fee may be received if they are chosen, there is no obligation to use their services, and an alternative mortgage provider/solicitor can be chosen.

MGY.CO.UK