



## Newport Avenue, E14

£1,800 Per calendar month

A spacious and well-presented one-bedroom, one-bathroom apartment. The property boasts a bright and airy reception room with a Juliette balcony, a modern fitted kitchen, a generously sized double bedroom, and a contemporary bathroom.

Ideally situated close to local amenities and excellent transport links. Moments from East India DLR, offering quick access to Canary Wharf by DLR, direct bus routes, or on foot.

### Features

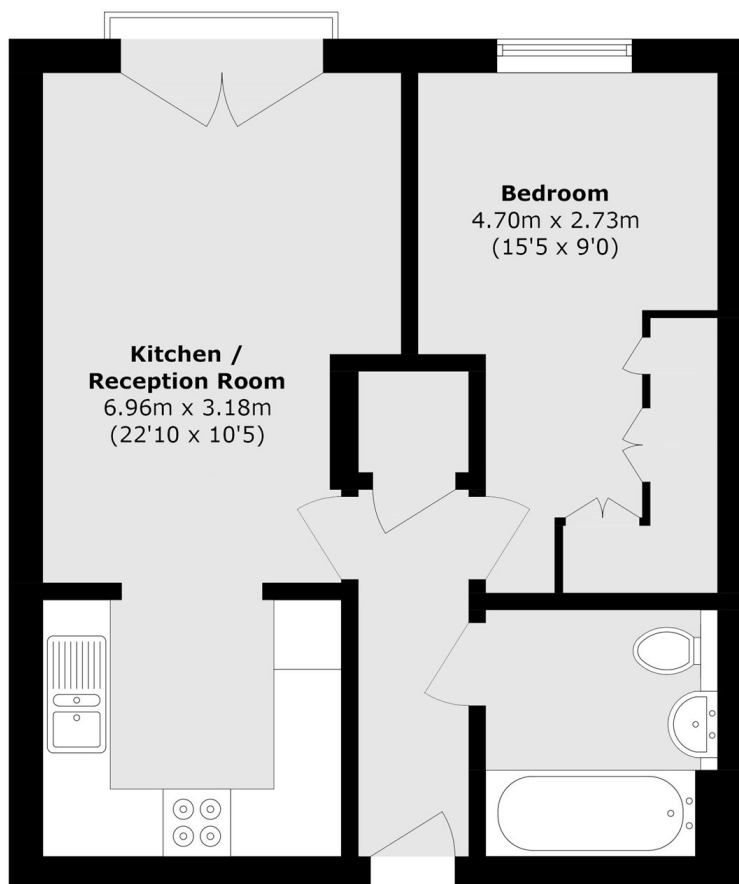
- One Double Bedroom
- Purpose Built Block
- Mid-Floor Position
- Fitted Storage
- Juliette Balcony
- Within 0.1 Miles to DLR



**Newport Avenue, E14**



# Newport Avenue, London, E14



Total area (approx.): 41.6 sq. m (447.8 sq. ft)