



## Bonnington Square, SW8

£580,000



- One Bedroom
- Garden Flat
- Private rear garden
- Excellent Transport
- Close to shops and amenities









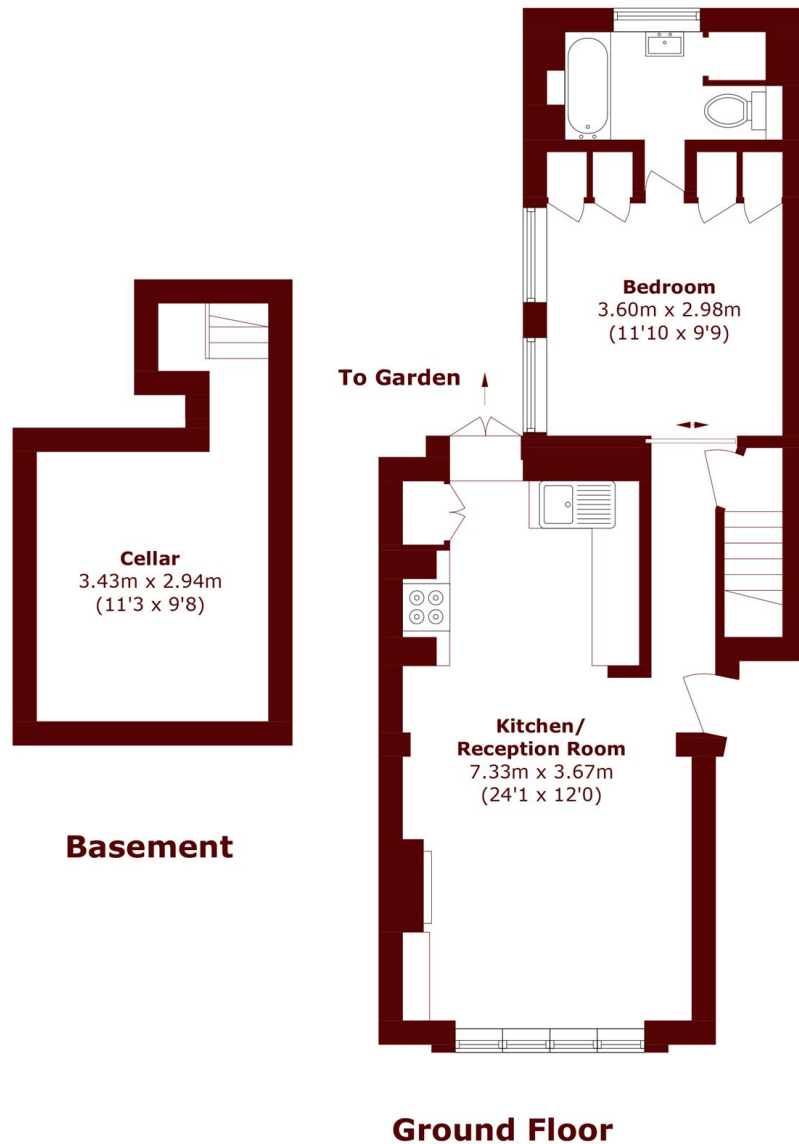
## ABOUT THE PROPERTY

An immaculate one-bedroom garden flat with cellar, set within the highly sought-after Bonnington Square, one of Vauxhall's most picturesque and community-focused residential enclaves. Extending to approximately 613 sq ft including the cellar, this beautifully presented home combines period charm with practical living space and private outdoor amenity.



Bonnington Square is renowned for its village-like atmosphere, mature trees and community gardens, including the much-loved Bonnington Square Pleasure Garden. Despite its peaceful setting, the property is moments from the vibrant amenities of Vauxhall, offering riverside walks, independent cafés, restaurants and everyday conveniences.





Total area (approx.): 57.0 sq. m (613.5 sq. ft)  
(Including Basement)

## Marsh & Parsons Kennington

295 Kennington Road,  
London, SE11 4QE  
020 7587 1533