



Lyons Place, NW8

£3,250 Per calendar month

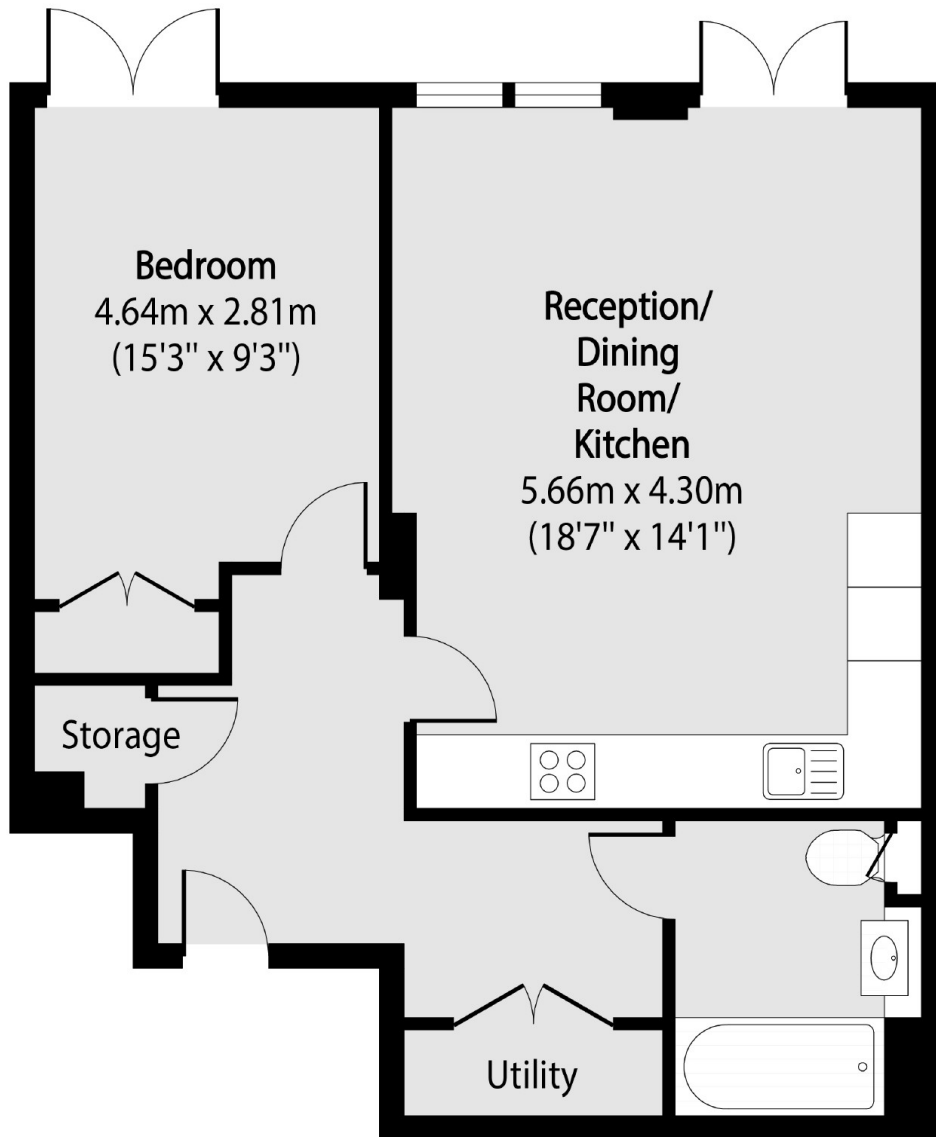
This spacious and elegant one-bedroom apartment features a stunning open-plan living area that opens onto a large private terrace. The development offers additional amenities, including a concierge and access to the beautifully landscaped communal garden. The apartment is furnished to a high contemporary standard, providing both style and comfort.

Lyons Place is ideally situated, equidistant from both Hyde Park and Regent's Park, offering a prime location nestled between St John's Wood, Maida Vale, and Little Venice. These charming neighbourhoods are connected by the serene beauty of Regent's Canal. St John's Wood, a peaceful, leafy area, provides a tranquil retreat just minutes away from the vibrant West End.

Features

- First Floor With Lift
- Private Balcony
- Communal Courtyard
- Concierge
- Siemens Appliances
- Great Storage Throughout
- Central Location

Lyons Place, London, NW8



Total area (approx): 53.38 sq m (575 sq. ft)