

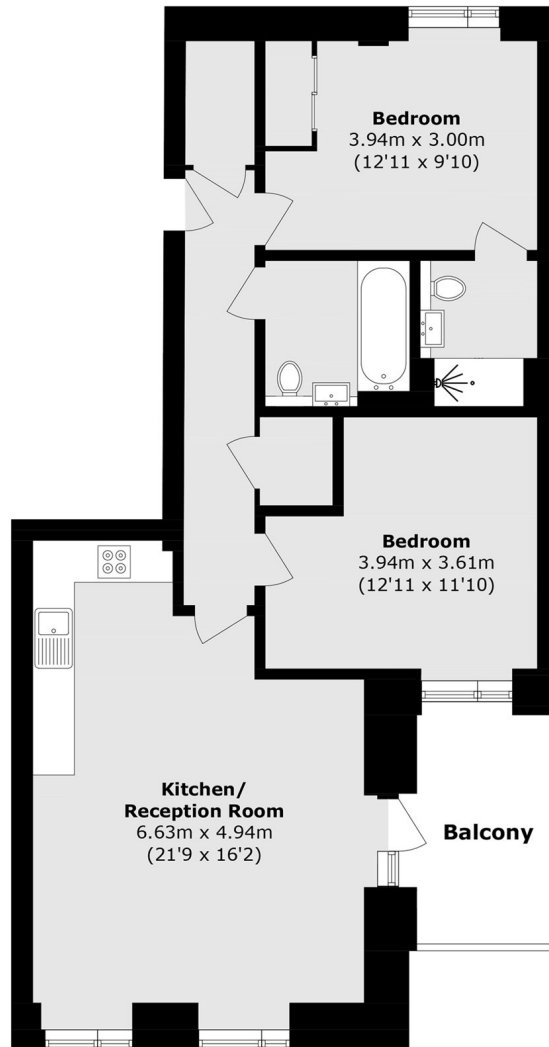


Salisbury Street, W3

£525,000

A modern two bedroom apartment located on the borders of Chiswick. This second floor flat offers just under 800 sq.ft of accommodation, is in immaculate condition throughout and has a private balcony.

Salisbury Street is located in the heart of Acton and is within half a mile of South Acton and Acton Central stations as well as the shops and amenities of Churchfield Road.



Total area (approx.): 73.8 sq. m (794.3 sq. ft)
Balcony area (approx.): 7.3 sq. m (78.5 sq. ft)

Robertson Smith & Kempson Acton Sales
137 High Street, Acton,
London, W3 6LY
020 8896 3996
actonsales@robertsonsmithandkempson.co.uk

Energy Rating: B. We aim to make our particulars both accurate and reliable. However they are not guaranteed; nor do they form part of an offer or contract. If you require clarification on any points then please contact us, especially if you're traveling some distance to view. Please note that appliances and heating systems have not been tested and therefore no warranties can be given as to their good working order.