

SW19

it's all in the postcode...



SW19

Mill Road

£475,000

- Two generous double bedrooms
- Fully refurbished to exceptional standard
- High specification finish throughout
- Share of the freehold
- Private off-street parking
- Colliers Wood/South Wimbledon stations
- Council tax Band C
- EPC Rating C



020 8544 2828

Wimbledon: Wimbledon Park: Colliers Wood

www.SW19.com

SW19 Estate Agents Ltd. Is registered in England & Wales No. 05508737

it's all in the postcode...

This beautifully renovated two-bedroom duplex apartment is finished to the highest standard and ready to impress! Featuring a brand-new boiler, off-street parking, and a share of the freehold, this spacious home perfectly blends comfort, style, and peace of mind. Ideally located just a short stroll from Colliers Wood and South Wimbledon tube stations, commuting is effortless. Set beside the picturesque Wandle River and Abbey Mills, enjoy scenic riverside walks, charming local eateries, and an enviable lifestyle right on your doorstep. A truly exceptional opportunity not to be missed!




020 8544 2828
Wimbledon: Wimbledon Park: Colliers Wood
www.SW19.com
SW19 Estate Agents Ltd. Is registered in England & Wales No. 05508737

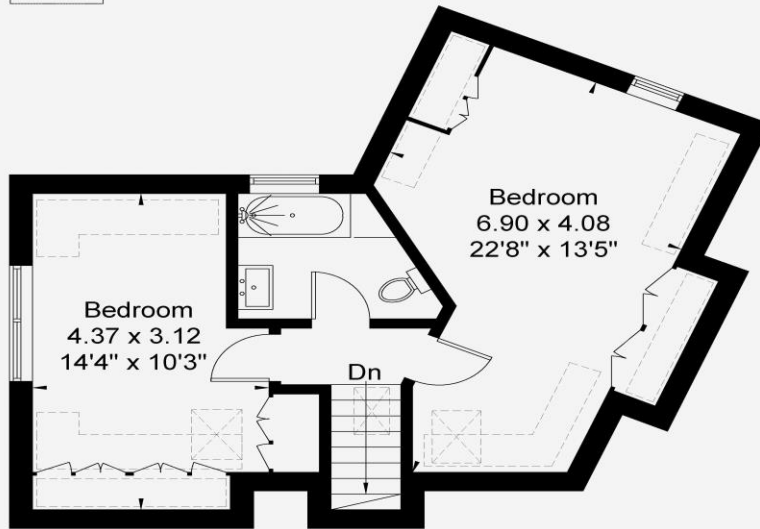
'it's all in the postcode...'

Mill Road, SW19

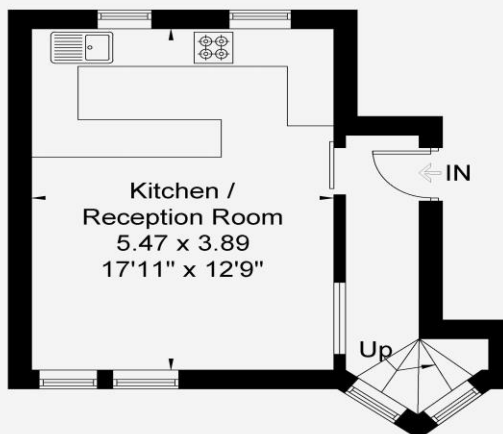
Approximate Gross Internal Area = 72.8 sq m / 783 sq ft



 = Reduced headroom below 1.5m / 5'0



Second Floor
46.4 sq m / 499 sq ft



First Floor
26.4 sq m / 284 sq ft

www.epc.uk.com info@epc.uk.com

Not to scale, for guidance only and must not be relied upon as a statement of fact. All measurements and areas are approximate only and have been prepared in accordance with the current edition of RICS code of Measuring Practice.

These particulars are for guidance only and should not be relied upon as a statement or representation of fact. All measurements given are approximate only and should not be relied upon for ordering carpets, equipment etc. Purchasers should satisfy themselves by inspection or otherwise as to the accuracy of the statements contained within. Neither SW19 estate agents ltd or related companies or their employees can confirm structural conditions of the property or that any appliances or other facilities are in working order. Purchasers are strongly recommended to arrange their own survey.

020 8544 2828

Wimbledon: Wimbledon Park: Colliers Wood

www.SW19.com

SW19 Estate Agents Ltd. Is registered in England & Wales No. 05508737

'it's all in the postcode...'