



Bramble Street, Coventry, CV1 2HU

**SHELDON
BOSLEY
KNIGHT**

LAND AND
PROPERTY
PROFESSIONALS

Property Description

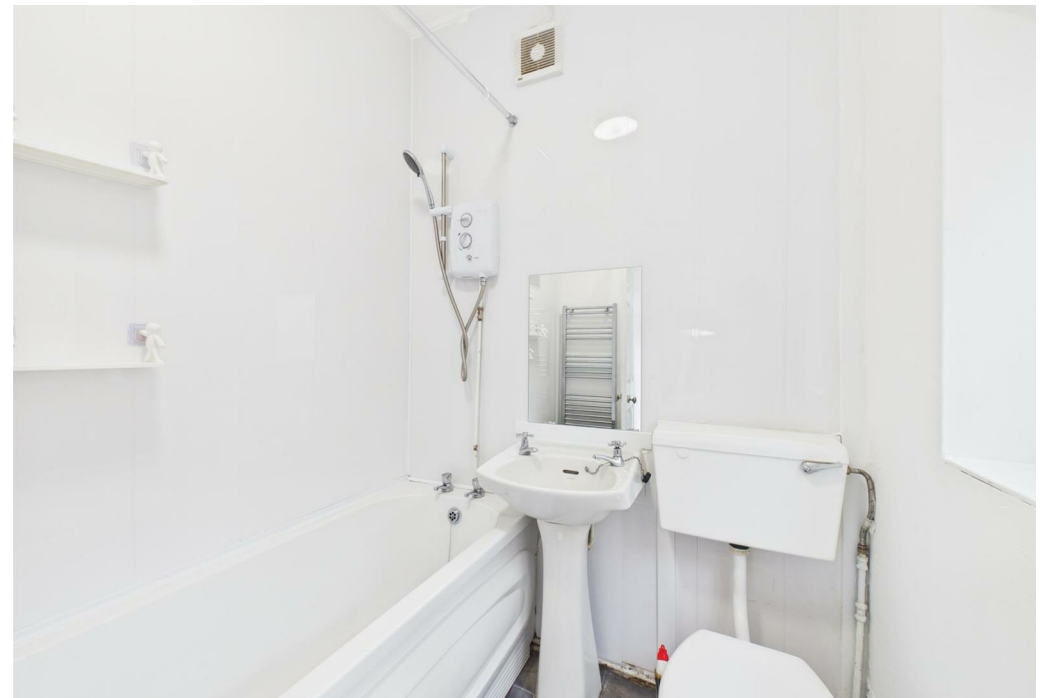
*** AVAILABLE NOW *** This well-presented three-bedroom mid-terrace home is located in the popular residential area of Stoke, Coventry, offering convenient access to local amenities, schools, and transport links into Coventry City Centre.

The property comprises a front lounge, a central living room with useful storage cupboard, and a fitted kitchen with beech units, black work surfaces, gas hob, and electric oven. Upstairs offers two double bedrooms, one single bedroom, and a family bathroom with bath, shower over, WC and sink.

Further benefits include gas central heating, double glazing, and both front and rear gardens.

Offered UNFURNISHED. Council Tax Band A. Energy Rating D.







Key Features

- Available January
- Terraced Property
- 3 Bedrooms
- Rear Garden
- On Street Parking
- Unfurnished Property
- Gas C/H

£1,100 PCM