



Stanley Grove, SW8
£650,000

Dexters



Stanley Grove, SW8

A spacious ground floor apartment on the sought after Stanley Grove. Arranged to include an open plan reception/kitchen, large private garden, two double bedrooms and two bathrooms. The property is being offered to the market chain free.

Entering the property, you are welcomed into a spacious open-plan reception room and kitchen, creating a fantastic central living and entertaining space with doors leading out to the garden. There are two bedrooms, including a generous principal bedroom, served by a family bathroom and an additional WC, completing this well-balanced and practical home.

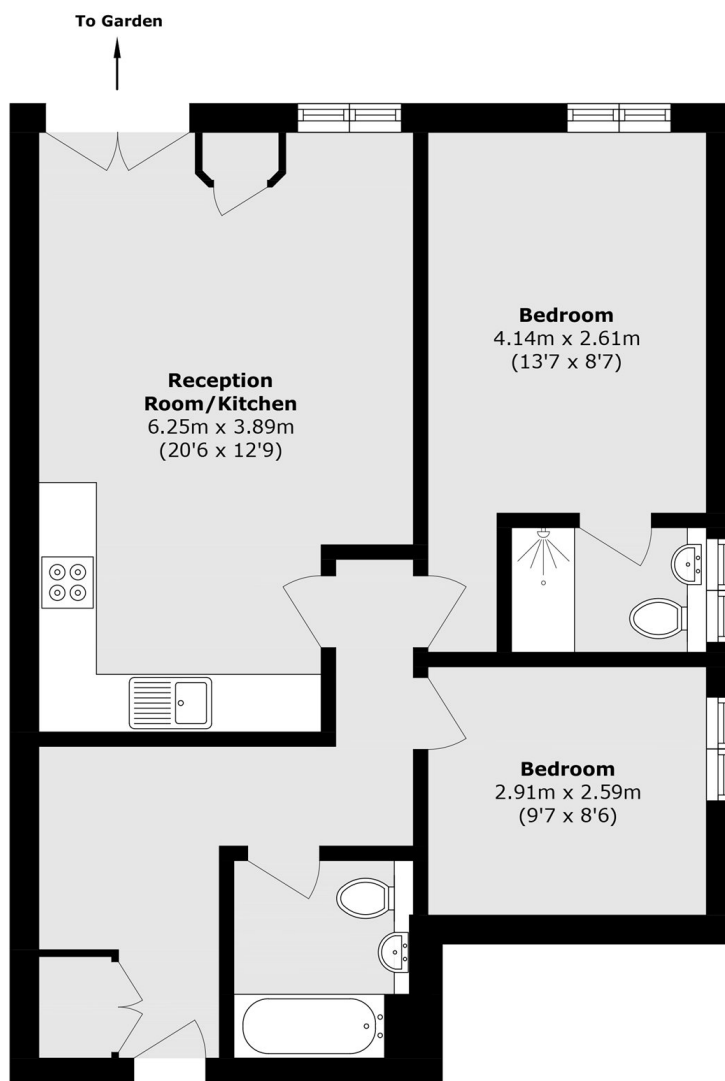
Stanley Grove is located on a quiet residential road within the popular 'Diamond Conservation' area, the flat is within easy reach of the amenities of Queenstown Road and local transport links including the Northern Line extension. The iconic Battersea Power Station & Battersea Park are a short stroll away.

Features

- Open Plan Reception/Kitchen
- Two Double Bedrooms
- Modern Kitchen
- Two Bathrooms
- Superb Location
- Chain Free



Stanley Grove, London, SW8



Total area (approx.): 62.5 sq. m (672.7 sq. ft)