



Dry Arch Road, Sunningdale

£525,000



Wilbury Lodge, Dry Arch Road, Sunningdale

Two bedroom ground floor apartment with private terrace in an exclusive gated development in Sunningdale with underground parking and a private storage room.

FEATURES

- No onward chain
- Currently let, tenancy ends mid August
- Exclusive gated development
- Walking distance to Sunningdale train station
- Charters school catchment
- Lift to all floors
- Built in wardrobes

ACCOMMODATION

- Impressive communal entrance
- Entrance hall
- Living/dining room
- Modern fitted kitchen
- Two double bedrooms
- Two bath/shower rooms

OUTSIDE

- Private terrace
- Two underground parking spaces
- Visitor parking
- Underground storage cupboard
- Communal gardens

LEASE INFORMATION

- Lease 125 years from 2025
- Service charge tbc
- Ground rent tbc

EPC RATING

C

LOCAL AUTHORITY/COUNCIL TAX

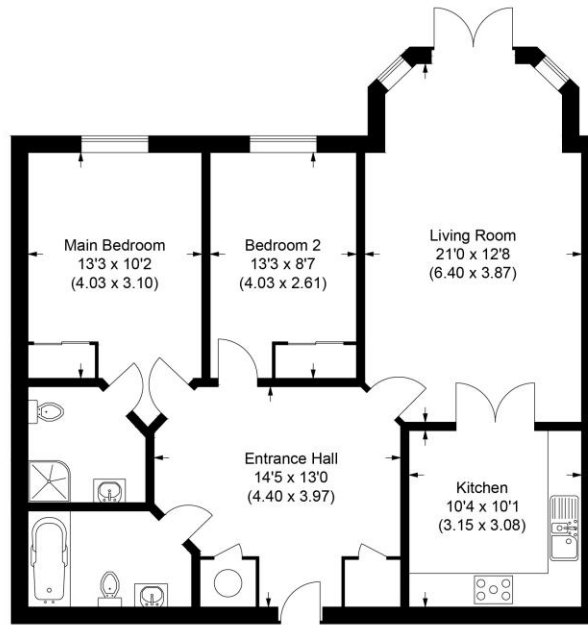
Windsor and Maidenhead – Band E







Approximate Gross Internal Area
84 sq m / 907 sq ft



Ground Floor

Illustration for identification purposes only, measurements are approximate, not to scale.

Disclaimer: We wish to inform prospective purchasers that we have prepared these sales particulars as a general guide. We have not carried out a detailed survey, nor tested the services, appliances and specific fittings. Room sizes are approximate and rounded: they are taken between internal wall surfaces and therefore include cupboards / shelves, etc. Accordingly, they should not be relied upon for carpeting, curtains / blinds and kitchen equipment, whether fitted or not, are deemed removable by the vendor unless specifically itemized within these.

Postcode for sat nav: SL5 0DB



The Old Dairy, 7 Updown Hill, Windlesham, Surrey GU20 6AF
enquiries@newtonrowe.co.uk | 01276 986900