



Little Russell Street, WC1A

£2,600 Per week

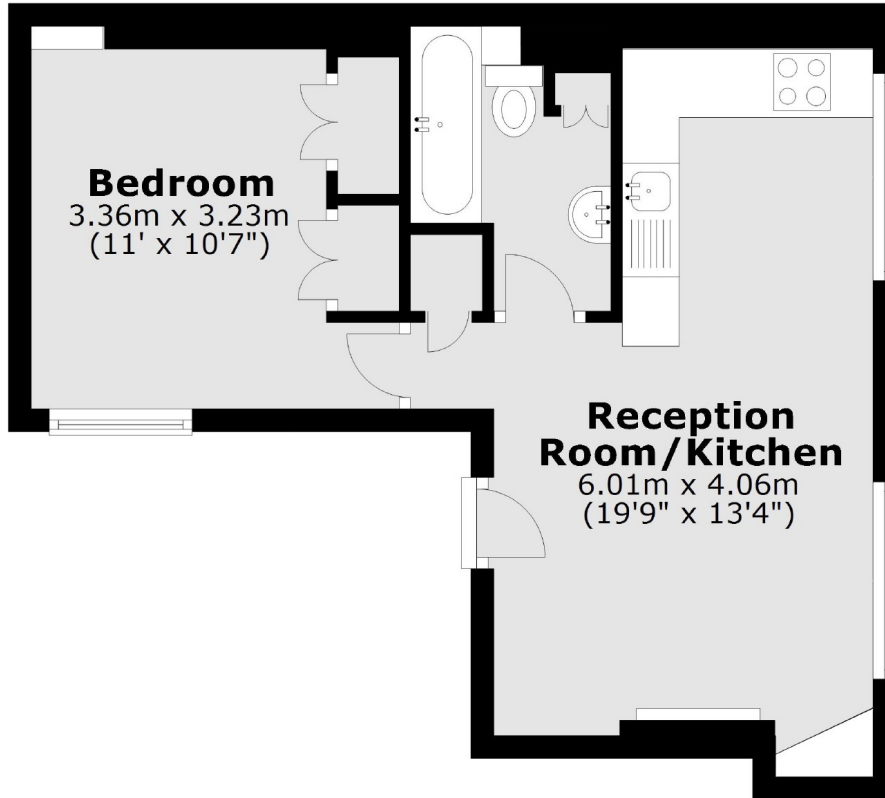
A well presented one bedroom apartment on the second floor of a charming Georgian building. The apartment has a spacious, open plan reception with modern kitchen, double bedroom with fitted storage and contemporary bathroom.

Little Russell Street is located between Tottenham Court Road and Holborn underground stations, nearby you have Bedford and Bloomsbury squares, The British Museum and Covent Garden.

Features

- One Bedroom
- Second Floor
- Modern Kitchen
- Great Natural Light
- Quiet Street
- Central Location

Little Russell Street, London, WC1A



Total area: approx. 34.7 sq. metres (373.5 sq. feet)