



Connells

Godolphin Close
Freshbrook SWINDON



Property Description

Situated in the popular Freshbrook in West Swindon, this well-presented three-bedroom family home offers spacious and practical accommodation ideal for modern living. The property is entered via a generous entrance hall, providing a welcoming first impression and useful space for coats and shoes. The kitchen diner is well proportioned, offering ample cupboard and worktop space along with room for a family dining table, making it perfect for everyday meals and entertaining. The lounge is bright and comfortable, enjoying views over the rear garden and providing an ideal space to relax. A convenient ground floor cloakroom completes the downstairs layout. To the first floor are three well-sized bedrooms, including a spacious principal bedroom and two further rooms suitable for children, guests or a home office. The family bathroom is fitted with a modern suite and serves all bedrooms. Externally, the property benefits from an enclosed rear garden, ideal for outdoor dining, children and pets. To the front, driveway parking provides valuable off-road parking. Located in West Swindon, the property offers easy access to local schools, amenities and transport links, as well as the wider town centre of Swindon.

Ground Floor Accommodation Entrance Hall

Double glazed window to the front aspect. Stairs rising to the first floor accommodation. Storage cupboard. Access to kitchen diner and lounge. Door to inner hall leading to the rear garden and cloakroom.

Cloakroom

Obscure double glazed window to the rear aspect. Two piece suite comprising of cupboards and drawers. Radiator.

Lounge

13' x 11' 5" (3.96m x 3.48m)
Double glazed window to the front aspect. Radiator.

Kitchen/Diner

13' 1" MAX x 11' 4" MAX (3.99m MAX x 3.45m MAX)
Double glazed window to the rear aspect. Fully fitted kitchen with a range of base and wall mounted units comprising of cupboards and drawers. Space for oven/hob and fridge freezer. Space and plumbing for washing machine and tumble dryer. Cooker hood. Radiator.

First Floor Accommodation First Floor Landing

Access to all bedrooms and family bathroom.

Bedroom One

13' 9" x 11' 3" (4.19m x 3.43m)
Double glazed window to the rear aspect. Radiator.

Bedroom Two

12' 4" x 11' 3" MAX narrowing to 9' 7" (3.76m x 3.43m MAX narrowing to 2.92m)
Double glazed window to the rear aspect. Radiator.

Bedroom Three

11' 5" MAX narrowing to 8' 7" x 7' 7" (3.48m MAX narrowing to 2.62m x 2.31m)
Double glazed skylight to the front aspect. Radiator.

Bathroom

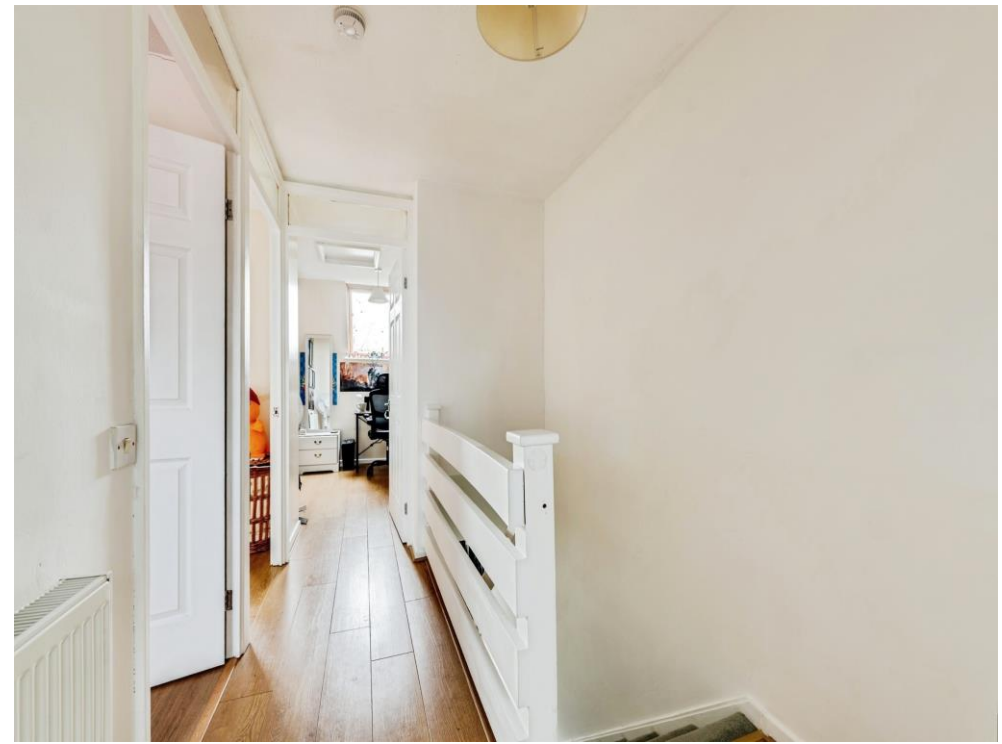
Obscure double glazed window to the rear aspect. Three piece suite comprising of panelled bath with shower over, bowl sink with tap and wooden basin underneath and Low Level WC. Partially tiled to water sensitive areas. Heated towel rail.

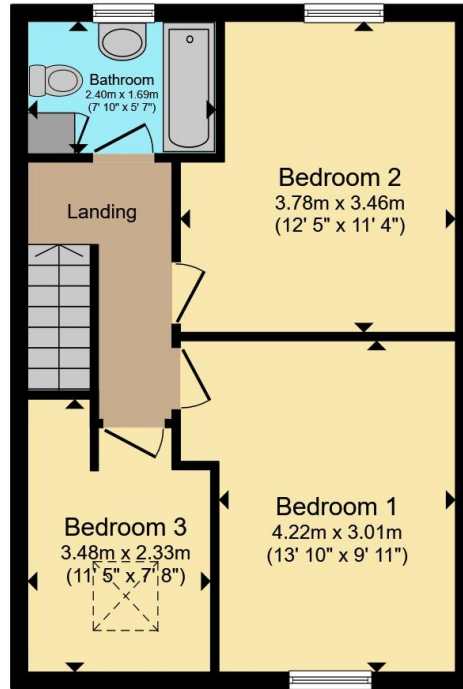
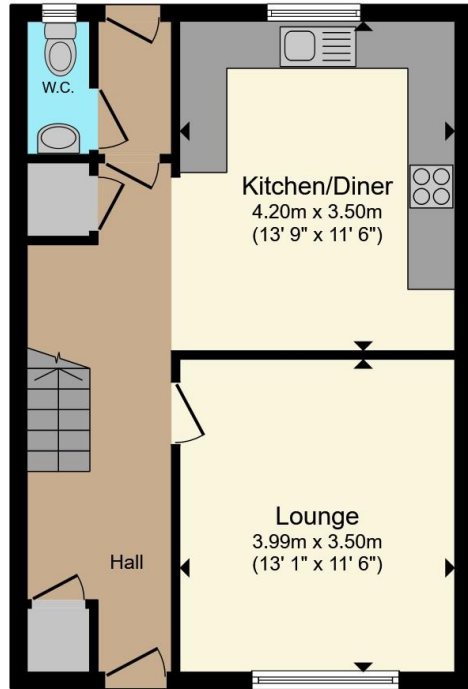
External Features Garden

Fenced boundaries. Shed. Laid to lawn and paving.

Parking

Driveway parking





Total floor area 90.2 m² (971 sq.ft.) approx

This floor plan is for illustrative purposes only. It is not drawn to scale. Any measurements, floor areas (including any total floor area), openings and orientation are approximate. No details are guaranteed, they cannot be relied upon for any purpose and they do not form part of any agreement. No liability is taken for any error, omission or misstatement. A party must rely upon its own inspection(s). Powered by www.propertybox.io



To view this property please contact Connells on

T 01793 708050
E swindonnorth@connells.co.uk

Unit B11 North Swindon District Centre Thamesdown Drive
SWINDON SN25 4AN

EPC Rating: C Council Tax
Band: B

view this property online connells.co.uk/Property/SDN314605

Tenure: Freehold



1. MONEY LAUNDERING REGULATIONS Intending purchasers will be asked to produce identification documentation at a later stage and we would ask for your co-operation in order that there will be no delay in agreeing the sale. 2. These particulars do not constitute part or all of an offer or contract. 3. The measurements indicated are supplied for guidance only and as such must be considered incorrect. Potential buyers are advised to recheck measurements before committing to any expense. 4. We have not tested any apparatus, equipment, fixtures, fittings or services and it is in the buyers interest to check the working condition of any appliances.

Connells Residential is registered in England and Wales under company number 1489613, Registered Office is Cumbria House, 16-20 Hockliffe Street, Leighton Buzzard, Bedfordshire, LU7 1GN. VAT Registration Number is 500 2481 05.

See all our properties at www.connells.co.uk | www.rightmove.co.uk | www.zoopla.co.uk

Property Ref: SDN314605 - 0002