



Waterhouse Gardens, Dutton Street, Manchester, M3 1LE

£392 Per Week

Discover this beautifully designed 2 bedroom 2 bathroom apartment within the brand-new Waterhouse Gardens development, located just a 10-minute walk from Manchester city centre.

This spacious, contemporary home features an open-plan layout with a sleek, modern kitchen complete with integrated appliances, ideal for stylish urban living.

Residents enjoy access to a host of premium amenities, including a swimming pool, fully equipped gym, cinema room, co-working spaces, and a welcoming lobby.

Perfectly positioned in Salford's fast-growing neighbourhood, it offers the best of city convenience and luxury lifestyle in one exceptional package.

FURNISHED. AVAILABLE FROM 01.09.2026

Marketing of On-Site Amenities and Agent Indemnity.

The Agent is authorised to market the building's on-site amenities by their client (the landlord), including but not limited to the concierge services and gym facilities (collectively, the "Amenities"), based strictly on descriptions and specifications provided by the Client & or the developer. The Agent acts solely as a marketing representative and exercises no operational control, management, or oversight over the Amenities and as such the amenities are subject to change or withdrawal by the freeholder/developer or their representatives.

- 2 BEDROOM 2 BATHROOM APARTMENT
- LUXURY BATHROOM SUITE
- CINEMA ROOM
- 10 MINUTE WALK TO CITY CENTRE
- FURNISHED
- SWIMMING POOL
- CO WORKING & MEETING SPACES
- LUXURY FITTED KITCHEN
- GYM
- 24/7 CONCIERGE

Waterhouse Gardens, Dutton Street, Manchester, M3 1LE



COMMUNAL LOUNGE



COMMUNAL LOUNGE



COMMUNAL LOUNGE



WATERHOUSE GARDENS



WATERHOUSE GARDENS

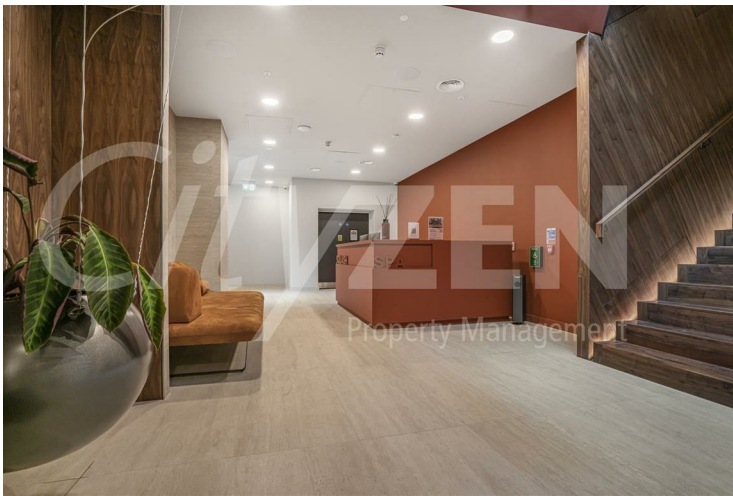
Waterhouse Gardens, Dutton Street, Manchester, M3 1LE



POOL



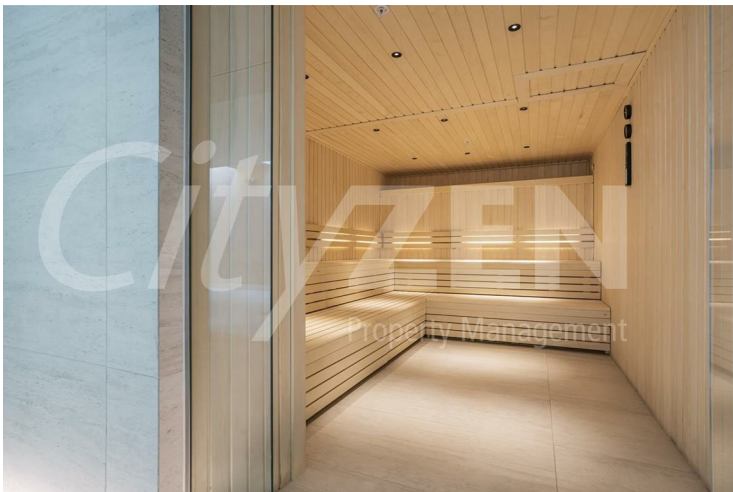
SQUASH COURT



SPA RECEPTION



POOL



SAUNA



WATERHOUSE GARDENS

Waterhouse Gardens, Dutton Street, Manchester, M3 1LE



RECEPTION



KITCHEN



RECEPTION



RECEPTION



RECEPTION



BATHROOM

Waterhouse Gardens, Dutton Street, Manchester, M3 1LE



BEDROOM



RECEPTION



BEDROOM



BEDROOM



BEDROOM



BEDROOM

Waterhouse Gardens, Dutton Street, Manchester, M3 1LE



BEDROOM



EN SUITE

Approximate Gross Internal Area 773 sq ft - 72 sq m



First Floor



Energy Efficiency Rating		
	Current	Potential
Very energy efficient - lower running costs		
(92 plus) A		
(81-91) B		
(69-80) C	79	79
(55-68) D		
(39-54) E		
(21-38) F		
(1-20) G		
Not energy efficient - higher running costs		
England & Wales		EU Directive 2002/91/EC
Environmental Impact (CO ₂) Rating		
	Current	Potential
Very environmentally friendly - lower CO ₂ emissions		
(92 plus) A		
(81-91) B		
(69-80) C		
(55-68) D		
(39-54) E		
(21-38) F		
(1-20) G		
Not environmentally friendly - higher CO ₂ emissions		
England & Wales		EU Directive 2002/91/EC

We have prepared these property particulars as a general guide to a broad description of the property. They are not intended to constitute part of an offer or contract. We have not carried out a structural survey and the services, appliances and specific fittings have not been tested. All photographs, measurements, floorplans and distances referred to are given as a guide only and should not be relied upon for the purchase of carpets or any other fixtures or fittings. Lease details, service charges and ground rent (where applicable) and council tax are given as a guide only and should be checked and confirmed by your Solicitor prior to exchange of contracts.