



Landor Road, SW9

£2,400 Per calendar month

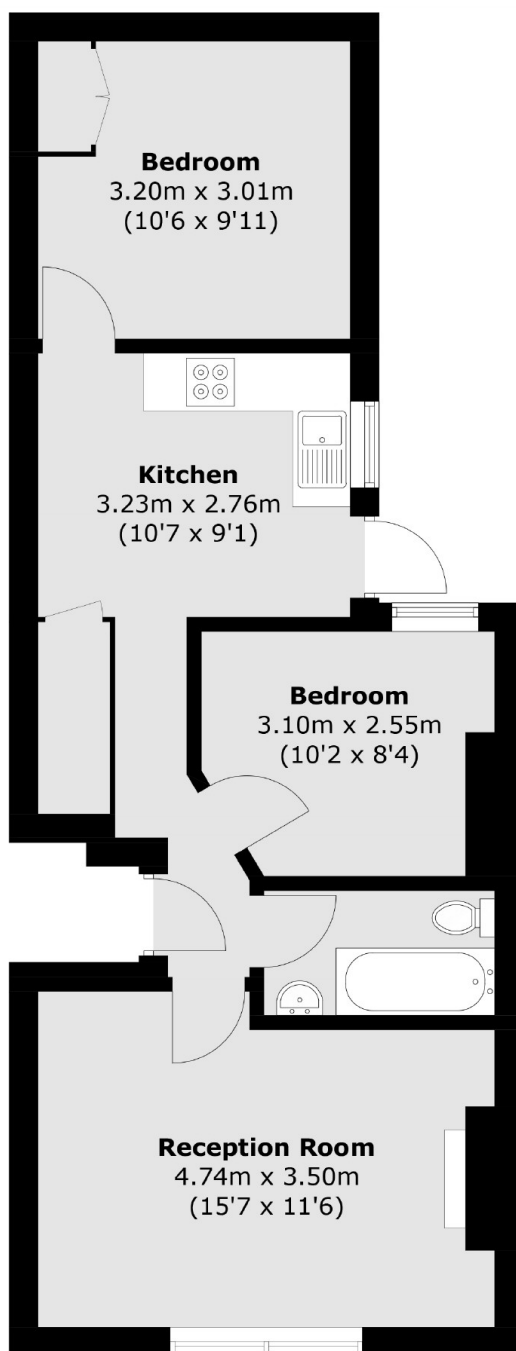
A ground floor apartment with a private garden. Accommodation includes a spacious reception room, two double bedrooms and a separate eat-in kitchen which leads out to a small garden.

Landor Road is located moments from the shops, restaurants and bars of Clapham High Street, with excellent transport links into central London from Clapham North and Brixton stations.

Features

- Ground Floor Flat
- Two Double Bedrooms
- Separate Living Space
- Private Garden
- Neutral Interior
- Close to Transport

Landor Road, London, SW9



Ground Floor

Total area (approx.): 52.3 sq. m (562.9 sq. ft)