



# Derby Court

Derby Road, SW14

Asking Price £725,000

Stylish and Spacious Upper Floor Maisonette – Approx. 1,200 sq. ft.

Set over the upper floors of a charming period property, this beautifully refurbished and extended maisonette offers approximately 1,200 sq. ft. of bright and versatile living space. Arranged over two levels, the flexible layout provides the option of three bedrooms or two reception rooms, ideal for modern family living or those seeking a work-from-home setup.

The home is finished to a high standard throughout, featuring wooden and tiled flooring, stylish décor, and double-glazed windows. The heart of the property is a generous reception room, complemented by a well-appointed separate kitchen. There are two contemporary bathrooms, including a luxurious top-floor en-suite with a freestanding bath and separate shower.

A standout feature is the spacious principal bedroom on the upper floor, complete with a walk-in wardrobe and elegant en-suite, offering a peaceful retreat.

Derby Road is a sought-after residential street on the border of East Sheen and Richmond. Ideally situated for families, the property is within close proximity to the highly regarded Sheen Mount Primary School. The expansive green spaces of Sheen Common and Richmond Park are also nearby, perfect for outdoor activities and relaxation.

**CHESTERTONS**



# Derby Court

## Derby Road, SW14

- 1200 Square Feet
- Three Double bedrooms
- Two Bathrooms
- Extended and Refurbished
- Close to Sheen Mount and Richmond Park



---

**Tenure:** Leasehold

**Service Charge:** £0

**Ground Rent:** £0

**Local Authority:** London Borough of Richmond upon Thames

**Council Tax Band:** D

---

***Chestertons East Sheen Sales***

254A Upper Richmond Road West

East Sheen

London

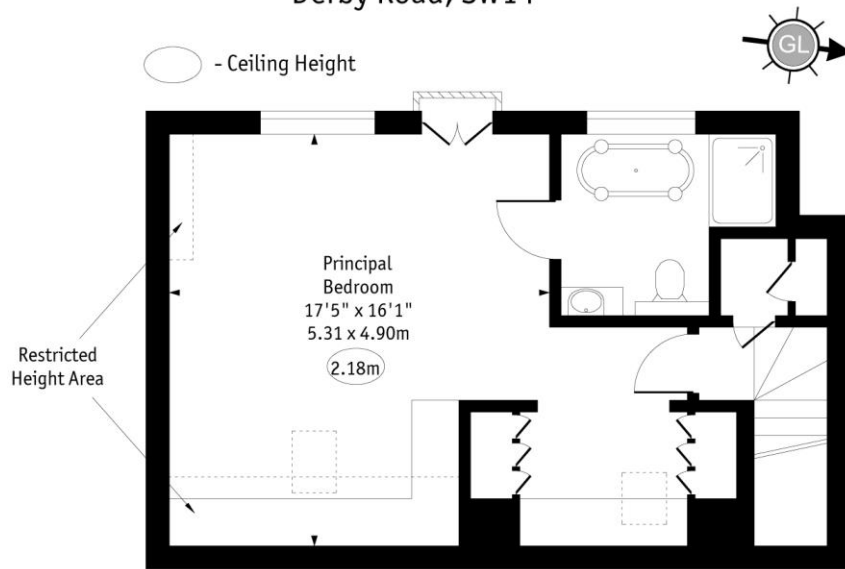
SW14 8AG

sheen@chestertons.co.uk

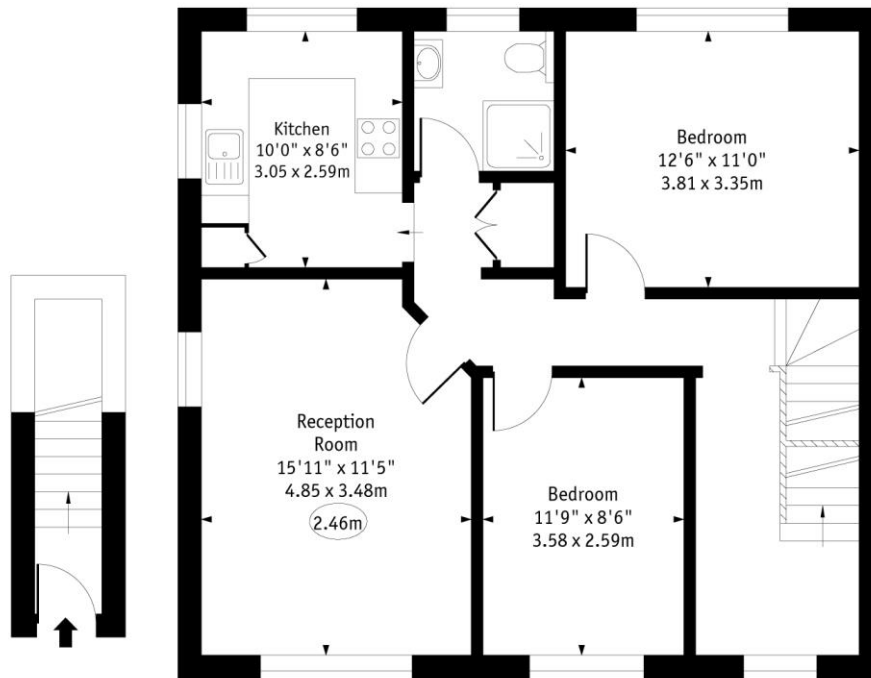
020 8104 0580

chestertons.co.uk

Derby Court,  
Derby Road, SW14



Second Floor



Ground Floor

First Floor

Approx Gross Internal Area 1192 Sq Ft - 110.74 Sq M

Approx. Floor Area Including Restricted Heights Area 1232 Sq Ft - 114.45 Sq M

Every attempt has been made to ensure the accuracy of the floor plan shown.  
However, all measurements, fixtures, fittings, and data shown are approximate interpretations and for illustrative purposes only. Measured according to the RICS. Not To Scale.

www.goldlens.co.uk  
Ref. No. 029297.1EH