



Durley Avenue, Waterlooville PO8 8UZ

welcome to

Durley Avenue, Waterloo

A versatile detached house offering five bedrooms, one of which is downstairs, two reception rooms, utility and conservatory and benefiting from off road parking for three cars as well as a private rear garden with fruit trees.

Entrance Hall

Via front door with double glazed panels to either side. Laminate flooring, radiator.

Cloakroom

Double glazed window to side aspect. Tiled floor, cupboard, low level WC, vanity wash hand basin.

Lounge / Diner

23' 9" x 12' 2" (7.24m x 3.71m)

Double glazed windows to front and rear aspects. Laminate flooring, two radiators, fireplace. Stairs leading to first floor.

Kitchen

12' 1" x 8' 1" (3.68m x 2.46m)

Double glazed window to rear aspect. Range of wall and base units with work surface over, incorporating one and a half bowl sink unit with mixer tap over. Built-in oven, gas hob and dishwasher. Space for appliances. Tiled floor.

Utility Room

9' 9" x 8' 5" (2.97m x 2.57m)

Double glazed to side and rear aspect with polycarbonate roofing. Tiled floor, sink and drainer over cupboard units, space for appliances. Double glazed door to rear aspect.

Conservatory

14' 9" x 9' 1" (4.50m x 2.77m)

Double glazing to rear and side aspects with polycarbonate roofing. Radiator, double glazed door to rear aspect.

Bedroom Five

16' 2" x 8' (4.93m x 2.44m)

Double glazed bay window to front aspect. Built-in cupboard, laminate flooring, radiator.

First Floor Landing

Carpet flooring, access to loft space, two airing cupboards.

Bedroom One

12' 3" max x 12' 2" max (3.73m max x 3.71m max)

Double glazed window to front aspect. Carpet flooring, radiator. Built-in wardrobe and cupboard.

Bedroom Two

12' x 8' 3" (3.66m x 2.51m)

Double glazed window to front aspect. Built-in cupboard, laminate flooring, radiator.

En-Suite

Double glazed window to side aspect. Vinyl flooring, low level WC, vanity wash hand basin, shower cubicle.

Bedroom Three

11' 2" x 9' (3.40m x 2.74m)

Double glazed window to rear aspect. Built-in wardrobe, radiator, laminate flooring.

Bedroom Four

8' 2" max x 8' 1" max (2.49m max x 2.46m max)

Double glazed window to rear aspect. Laminate flooring, radiator.

Bathroom

Double glazed window to rear aspect. Suite comprising corner bath with electric shower over, pedestal wash hand basin and low level WC. Heated towel rail, vinyl flooring.

Outside

Front

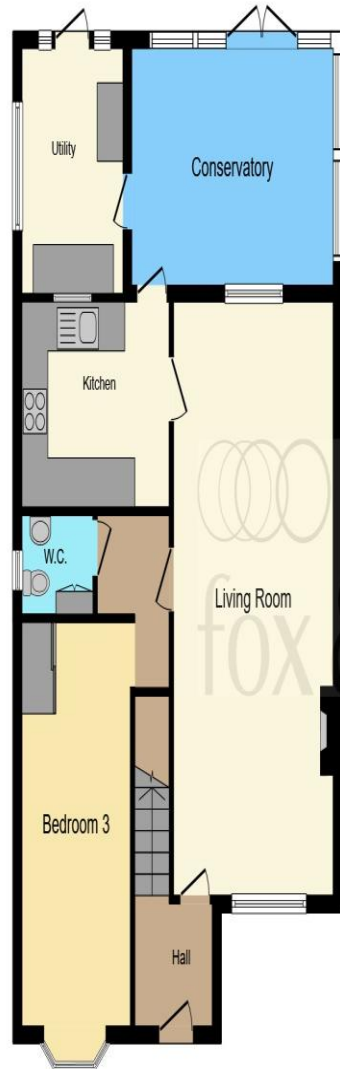
Block paved driveway providing off road parking for up to three cars. Mature shrubs and trees.

Rear Garden

Brick paved patio and laid to lawn with mature shrubs and trees, including fruit trees. Storage shed to side, wooden shed, greenhouse.

Agents Note:

The sale of this property is subject to grant of probate. Please seek an update from the branch with regards to the potential timeframes involved.

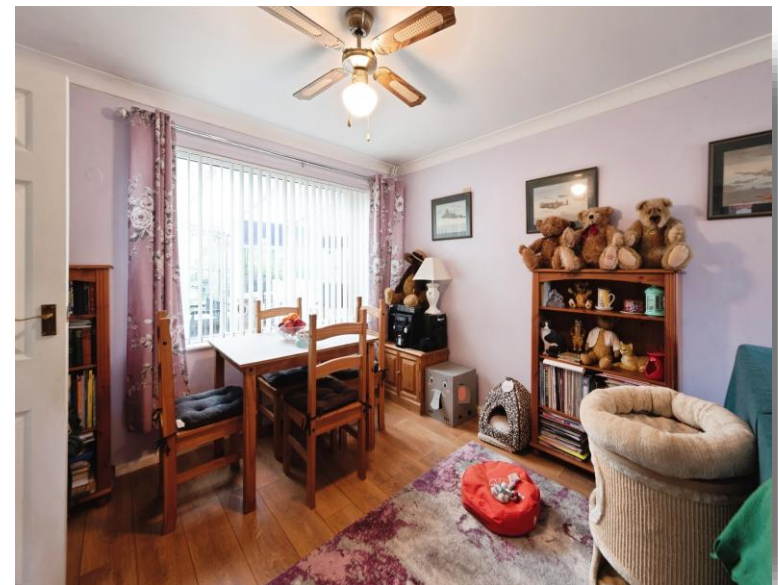


Ground Floor



First Floor

This floor plan is for illustrative purposes only. It is not drawn to scale. Any measurements, floor areas (including any total floor area), openings and orientation are approximate. No details are guaranteed, they cannot be relied upon for any purpose and they do not form part of any agreement. No liability is taken for any error, omission or misstatement. A party must rely upon its own inspection(s). Powered by www.focalagent.com



welcome to
Durley Avenue,
Waterlooville

- Detached House
- Five Bedrooms
- En-Suite Bathroom
- Off Road Parking
- Private Rear Garden

Tenure: Freehold EPC Rating: D
Council Tax Band: E

offers in excess of
£450,000



view this property online fox-and-sons.co.uk/Property/WLV109209



Property Ref:
WLV109209 - 0008

1. MONEY LAUNDERING REGULATIONS Intending purchasers will be asked to produce identification documentation at a later stage and we would ask for your co-operation in order that there is no delay in agreeing the sale. 2. These particulars do not constitute part or all of an offer or contract. 3. The measurements indicated are supplied for guidance only and as such must be considered incorrect. Potential buyers are advised to recheck measurements before committing to any expense. 4. We have not tested any apparatus, equipment, fixtures or services and it is in the buyers interest to check the working condition of any appliances. 5. Where an EPC, or a Home Report (Scotland only) is held for this property, it is available for inspection at the branch by appointment. If you require a printed version of a Home Report, you will need to pay a reasonable production charge reflecting printing and other costs. 6. We are not able to offer an opinion either written or verbal on the content of these reports and this must be obtained from your legal representative. 7. Whilst we take care in preparing these reports, a buyer should ensure that his/her legal representative confirms as soon as possible all matters relating to title including the extent and boundaries of the property and other important matters before exchange of contracts.

Fox & Sons is a trading name of Sequence (UK) Limited which is registered in England and Wales under company number 4268443, Registered Office is Cumbria House, 16-20 Hockliffe Street, Leighton Buzzard, Bedfordshire, LU7 1GN. VAT Registration Number is 500 2481 05.

fox & sons



023 9226 2447



Waterlooville@fox-and-sons.co.uk



81B London Road, WATERLOOVILLE,
Hampshire, PO7 7ES



fox-and-sons.co.uk