



Tooting High Street, SW17

£2,150 Per calendar month

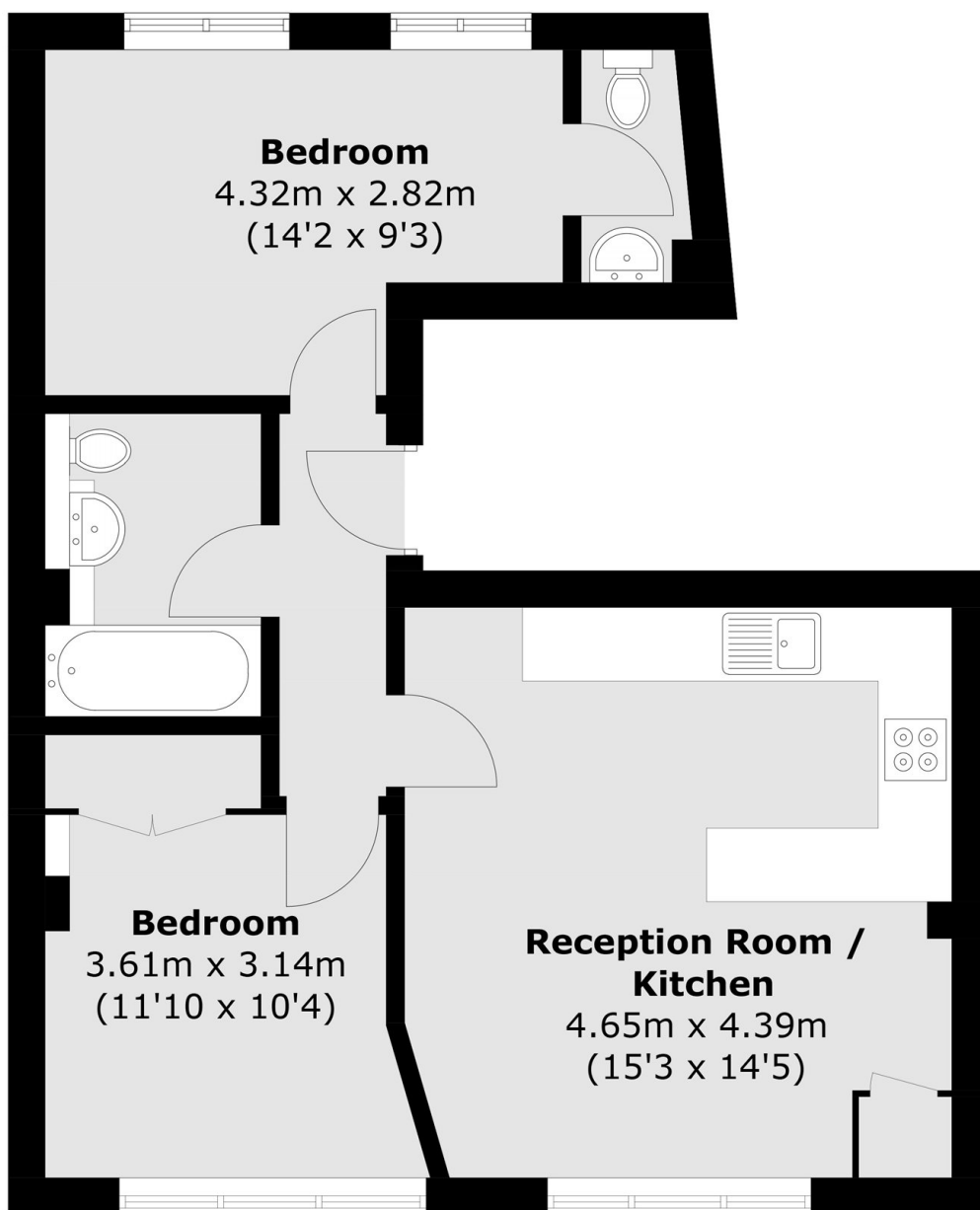
This two bedroom apartment is well located on Tooting Broadway. The property benefits from an additional WC and a large open plan kitchen/living area, making it perfect for a professional couple or sharers.

Located on Tooting High Street, the property offers superb access to the many shops, bars and restaurants of central Tooting and it's excellent transport links. The wide green open spaces of Tooting Bec Common are also within walking distance.

Features

- Two Bedrooms
- Additional WC
- Open Plan
- Excellent Location
- Recently Redecorated
- Wandsworth Council

Tooting High Street, London, SW17



Total area (approx.): 51.8 sq. m (557.6 sq. ft)