



MAGGS
& ALLEN



*** EXTREMELY SPACIOUS TWO BEDROOM APARTMENT IN A BLOCK OF SIX FLATS IN CENTRAL LOCATION ***

First floor apartment located in an amazing central location.

The property comprises of an entrance hallway, a bathroom with separate bath and shower, a large kitchen with with white goods which opens up onto the living/dinning room which had plenty of space. There are also two further huge bedrooms.

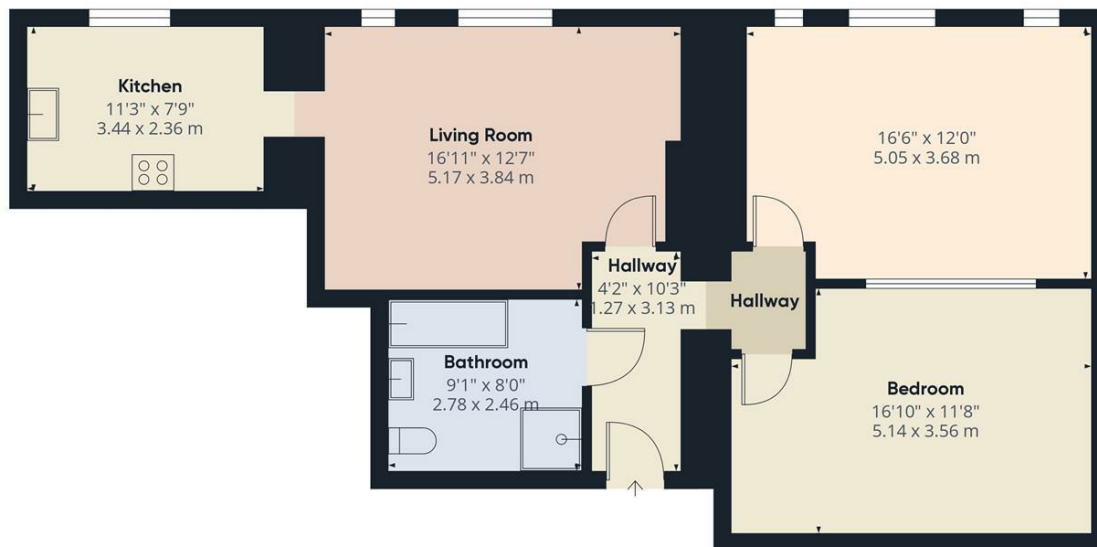
The property further benefits from bike storage on the lower level.

The property is available to a range of potential tenants due to the size, families are welcome as well as professional sharers.

The property is available from December 2025.



If you have a property to sell and would like a no obligation market appraisal, please contact the office on 0117 949 9000.



Approximate total area⁽¹⁾
794.27 ft²
73.79 m²

(1) Excluding balconies and terraces

While every attempt has been made to ensure accuracy, all measurements are approximate, not to scale. This floor plan is for illustrative purposes only.

Calculations are based on RICS IPMS 3C standard.

GIRAFFE360

- MODERN APARTMENT
- AMAZING CENTRAL LOCATION
- QUIET BUT CENTRAL
- AVAILABLE TO PROFESSIONAL SHARERS
- GREAT TRANSPORT LINKS
- CLOSE TO LOCAL AMENITIES
- BIKE STORAGE
- SPACIOUS BATHROOM SEPERATE BATH AND SHOWER
- TWO HUGE BEDROOMS
- AVAILABLE DECEMBER 2025

Guide Price: £1,495 PCM

Tenure:

Council Tax Band: B

Local Authority: BRISTOL CITY COUNCIL

Vendors Onward Position:

Viewing: By appointment only.

Contact Us: 0117 949 9000

Important Notice: This information was provided at the time of instruction and may be incorrect or liable to change. Please contact the office to confirm any details.





60 Northumbria Drive, Henleaze, Bristol, BS9 4HW

0117 949 9000

www.maggsandallen.co.uk | lettings@maggsandallen.co.uk



Maggs & Allen use all reasonable endeavours to supply accurate property information in line with the Consumer Protection from Unfair Trading Regulations 2008. These property details do not constitute any part of the offer or contract and all measurements are approximate. It should not be assumed that this property has all the necessary Planning, Building Regulations or other consents. Any services, appliances and heating system(s) listed have not been checked or tested. Please note that in some instances the photographs may have been taken using a wide angled lens and please be advised that any site plans used within our particulars are for illustrative purposes only and may not be to scale. Any distance from schools are for guidance only and you should make your own enquiries with the local authority.