



Goodman Street, Southbank, Leeds

£900 PCM

A stunning, high specification 1 bed apartment, in the landmark development, Victoria Riverside.

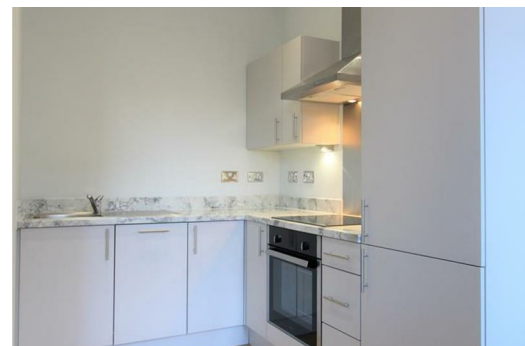
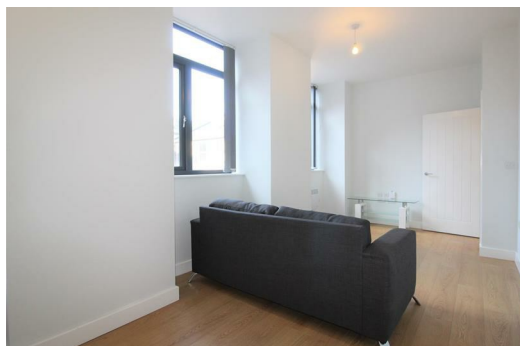
The interior boasts high ceilings, large windows and impressive open plan living space - perfect for entertaining. Cook up a storm in the contemporary Kitchen, which includes integrated fridge-freezer, washer/dryer and dishwasher. The bedroom is generously proportioned with high quality carpets and the luxurious tiled bathroom includes a bath with overhead shower.

Situated on the South Bank of Leeds City Centre, this apartment is perfect for those looking for a stylish city pad, with the added bonus of high quality furnishings and secure allocated parking included. Just 1 mile from Leeds City Centre, you'll have the mainline train station a few minutes away, along with the vast array of amenities the city has to offer.

With rapid regeneration taking place in the South Bank area, this is quickly becoming the city's hottest neighbourhood.

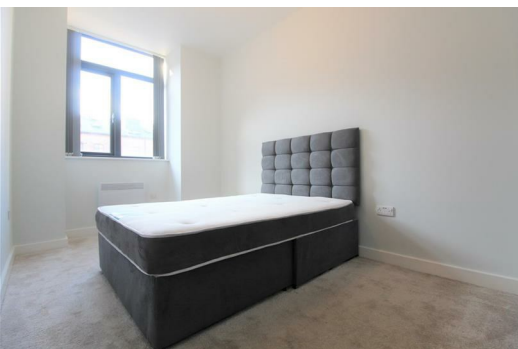
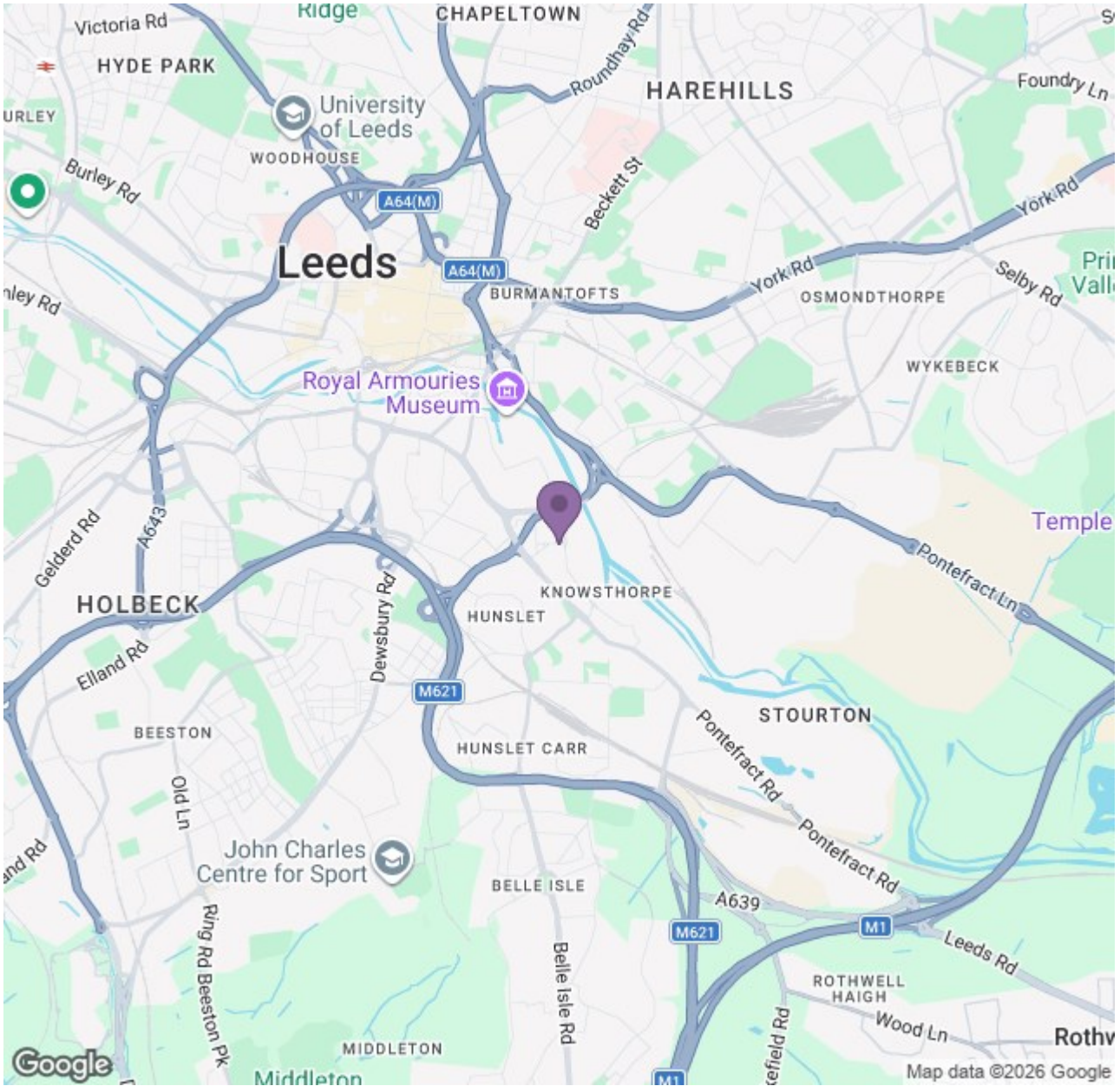
Don't miss out on this fantastic opportunity to live in a brand new home - we guarantee this apartment won't be around for long. Be sure to give our team a call today to arrange a visit.

Available 14th July 2026



Ascend

Built on higher standards



Energy Efficiency Rating		Environmental Impact (CO ₂) Rating	
Current	Target	Current	Target
Energy Efficiency: G	Energy Efficiency: B	Environmental Impact: G	Environmental Impact: B
56	58	61	61

England & Wales

Ascend

Built on higher standards