



London Road | | Halesworth | IP19 8LS

£950 PCM

DURRANTS
SINCE 1853

Key features

- Good Location
- Well Presented Property
- Enclosed Rear Garden
- Gas Central Heating
- Three Bedrooms
- Large Open Plan Living Space
- EPC Rating D

Description

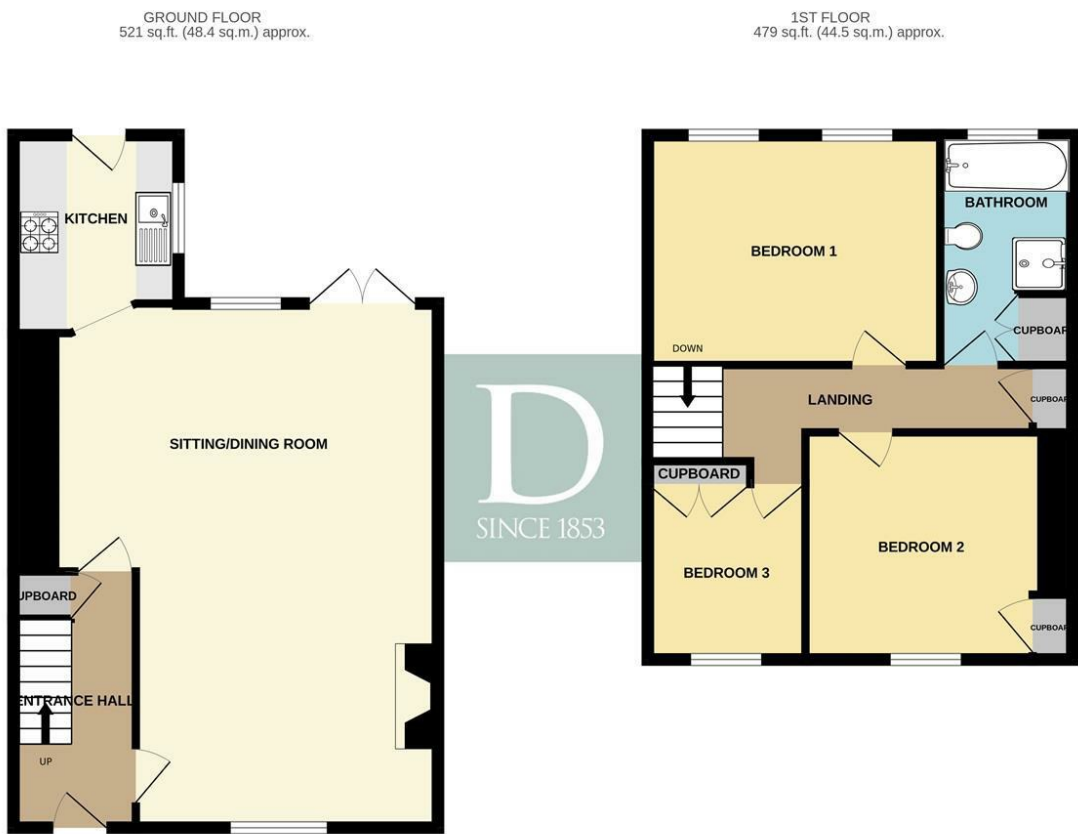
Three bedroom house located within walking distance of the town centre. The property is well maintained throughout and benefit's from an enclosed rear garden.

Directions





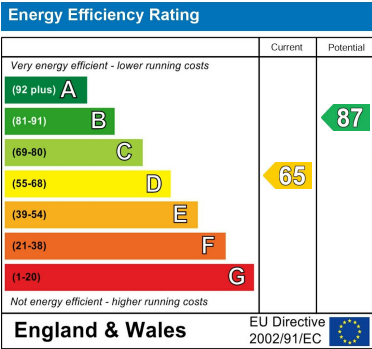
Floor plans



TOTAL FLOOR AREA : 999 sq.ft. (92.8 sq.m.) approx.

Whilst every attempt has been made to ensure the accuracy of the floorplan contained here, measurements of doors, windows, rooms and any other items are approximate and no responsibility is taken for any error, omission or mis-statement. This plan is for illustrative purposes only and should be used as such by any prospective purchaser. The services, systems and appliances shown have not been tested and no guarantee as to their operability or efficiency can be given.

Made with Metropix 62024



12 Thoroughfare
Halesworth
Suffolk
IP19 8AH
01986 872553
halesworth@durrants.com
<https://durrants.com/>