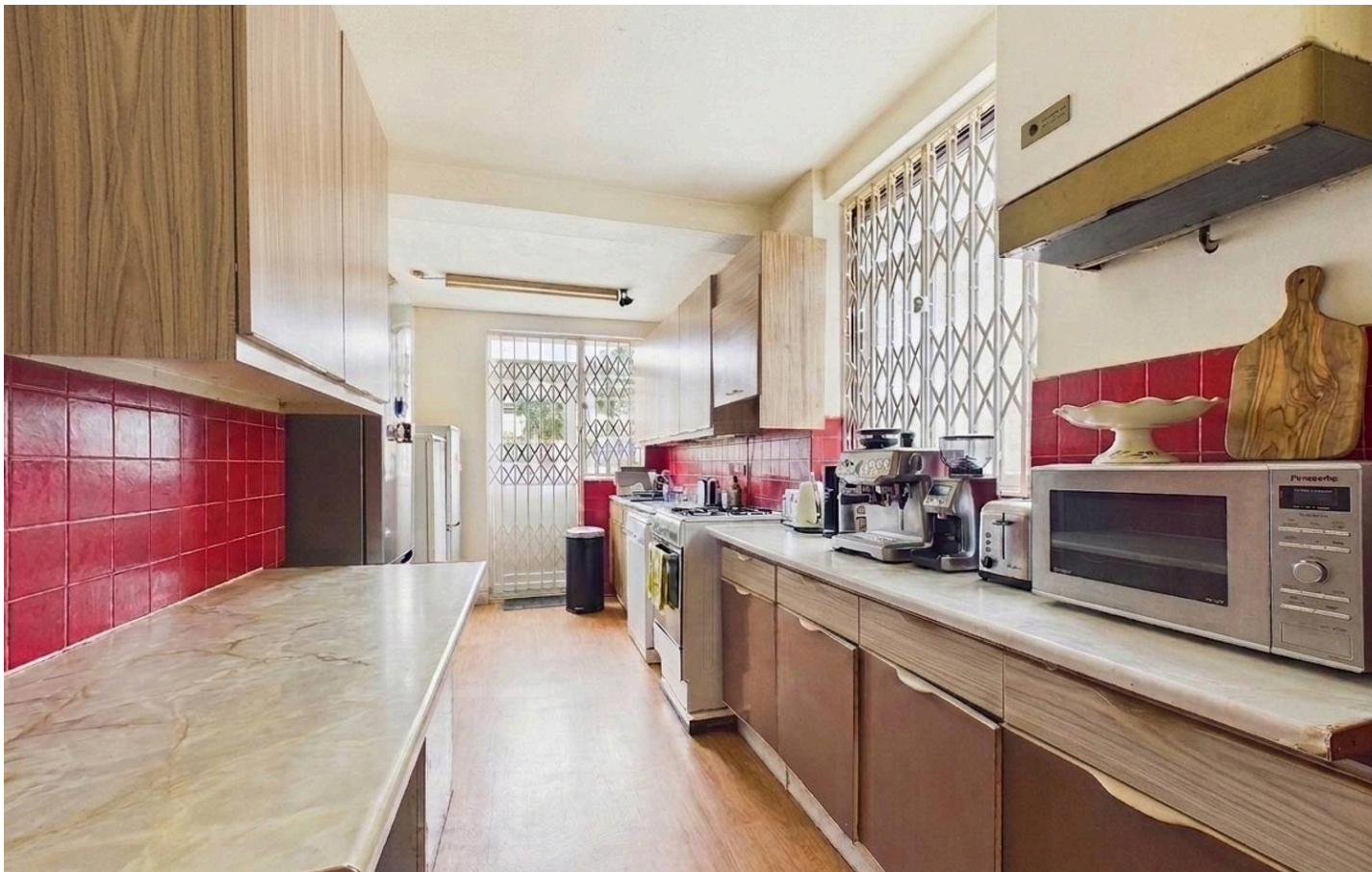




Torrington Drive, Harrow - HA2 8NF  
£575,000 | Freehold



**LAWRENCE RAND**



## Key Features & Description

- Three Bedroom
- Semi Detached
- Driveway
- Ground Floor WC
- Potential To Extend (STPP)

Situated on the ever-popular Torrington Drive, this well-three-bedroom semi-detached family home offers spacious and versatile accommodation throughout, making it an ideal purchase for growing families and commuters alike.

The ground floor comprises a welcoming entrance hallway leading to a bright and spacious reception room, a separate dining area perfect for entertaining, and a fitted kitchen with ample storage and workspace. Upstairs, the property benefits from three well-proportioned bedrooms and a family bathroom.

Externally, the home enjoys a private rear garden providing an excellent space for outdoor relaxation and family gatherings, whilst the front offers off-street parking. Subject to the necessary planning permissions, the property also presents excellent potential for future extension and enhancement.

Torrington Drive is conveniently located within easy reach of highly regarded local schools, a variety of shopping facilities, parks and excellent transport links, providing swift access into Central London and surrounding areas.

Presented with care by Lawrence Rand – helping you find the place you'll love to call home.





### **Nearest Stations**

Northolt Park Station - approx 0.3 miles

South Harrow Station - approx 0.4 miles

Rayners Lane Station - approx 1 mile

### **Verified Material Information:**

Council Tax band: E

EPC Energy Efficiency Rating: D

### **Suppliers:**

Electricity supply: Mains, Water supply: Mains  
water, Sewerage: Mains

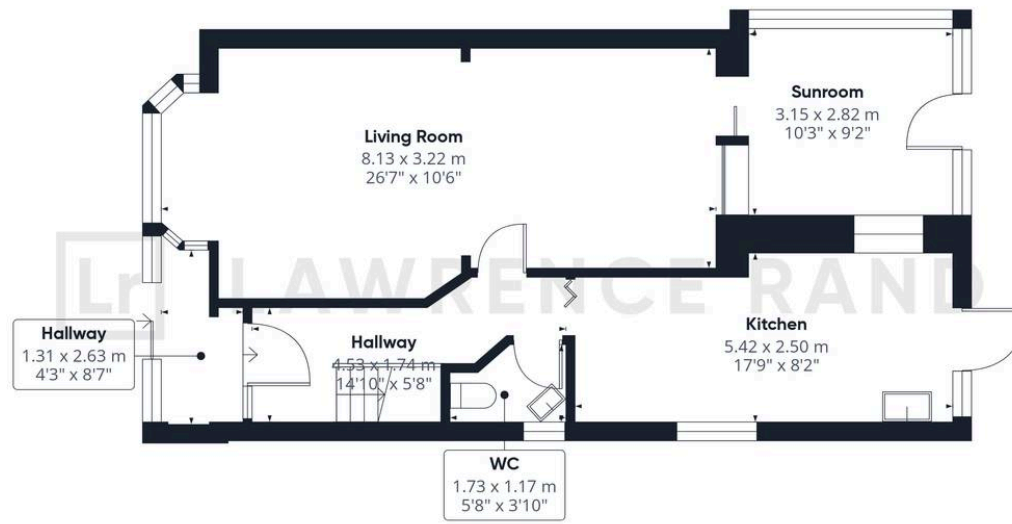
Heating: Gas central heating

### **Broadband & mobile coverage:**

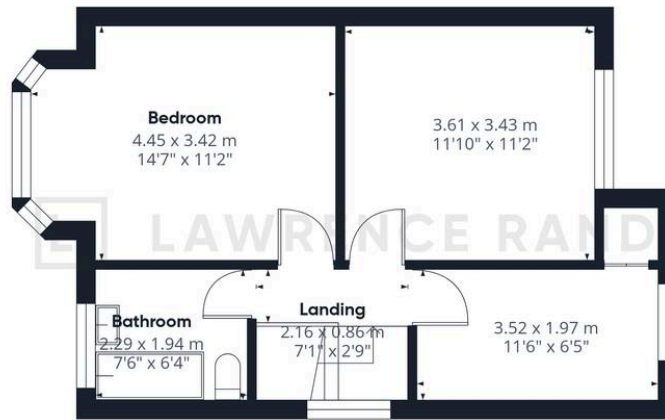
Broadband: FTTP (Fibre to the Premises)

Mobile coverage: O2 - Excellent, Vodafone -  
Excellent, Three - Excellent, EE - Excellent





Ground Floor



Floor 1



## Lawrence Rand

51 Victoria Road, Ruislip - HA4 9BH

01895 632211

[Sales@lawrence-rand.co.uk](mailto:Sales@lawrence-rand.co.uk)

[www.lawrence-rand.co.uk/](http://www.lawrence-rand.co.uk/)

Lawrence Rand Limited has made every reasonable effort to ensure the accuracy of the information provided. However, we accept no responsibility for errors, omissions, or misstatements. All measurements, distances, and descriptions are approximate and for guidance only. Prospective purchasers or tenants must verify all details independently. Some images may include AI-generated virtual staging to illustrate the potential of the property and are for visual guidance only. No warranty is given or implied, and these particulars do not form part of any offer or contract. Lawrence Rand reserves the right to amend or withdraw any property without notice.