



Dalmeny Road, N7

£550,000

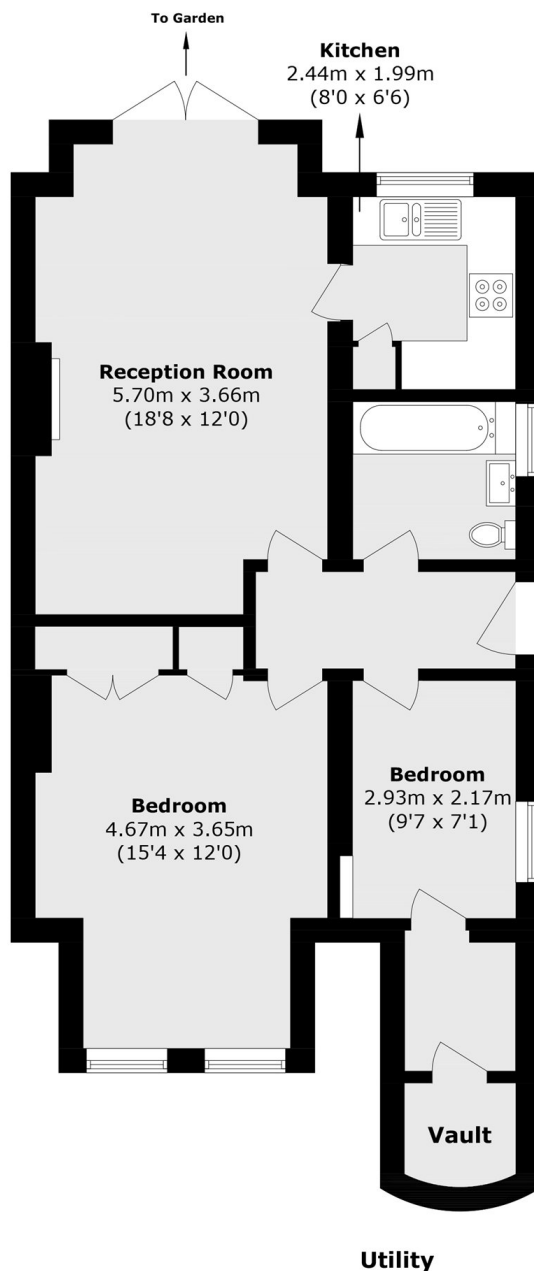
A charming two bedroom garden flat in the heart of Tufnell Park. This property offers a large living space with direct access to a lovely communal garden, a separate kitchen and comes with a share of the freehold.

Dalmeny Road is ideally located with green spaces and transport links close by. Tufnell Park playing fields and Hampstead Heath are within walking distance, with Tufnell Park underground station (Northern line) close by.

Features

- Two Bedrooms
- Private Entrance
- Share of Freehold
- Communal Garden
- Chain Free
- Great Transport Links

Dalmeny Road, London, N7



Total area (approx.): 63.2 sq. m (680.2 sq. ft)
(Including Vault)