



**Storrige Road, Westbury BA13 4HX**

**welcome to**

## **Storrige Road, Westbury**

Two-bedroom detached bungalow on Storrige Road, Westbury. Offered with no onward chain, featuring a lounge with fireplace, kitchen/diner, utility room, shower room, and two double bedrooms with built-in wardrobes. Outside includes gardens, driveway, and garage.

### **Inside**

#### **Entrance Porch**

Welcoming front porch with a modern UPVC door, convenient coat storage, and direct access to the entrance hall.

#### **Entrance Hall**

Spacious entrance hall providing access to all areas of the home, featuring a radiator, loft hatch, and an airing cupboard for additional storage.

#### **Living Room**

14' 5" max x 11' max ( 4.39m max x 3.35m max )

Generous front-facing living room with a large double-glazed window, feature stone fireplace with mantle, and a radiator beneath the window.

#### **Kitchen/ Diner**

14' 5" max x 9' 2" max ( 4.39m max x 2.79m max )

Spacious rear kitchen/diner featuring a large double-glazed window, a range of wall and base units, sink with drainer, and space for a cooker with fitted extractor. Includes plumbing for a dishwasher, space for a fridge/freezer, tiled flooring, radiator, and a dedicated dining area.

#### **Utility Room**

5' 11" max x 5' 7" max ( 1.80m max x 1.70m max )

Separate side utility room with a frosted double-glazed rear window, access to both front and rear gardens, plumbing for a washing machine, space for a dryer, and handy storage for cleaning essentials.

#### **Master Bedroom**

14' 4" max x 9' 3" max ( 4.37m max x 2.82m max )

Generous master bedroom positioned at the front, featuring a double-glazed window, radiator, and a large built-in wardrobe for ample storage.

#### **Bedroom Two**

10' 10" max x 8' 10" max ( 3.30m max x 2.69m max )

Second double bedroom at the rear, complete with a double-glazed window, radiator, and a spacious built-in wardrobe.

#### **Shower Room**

Fully tiled shower room with double glazed frosted window to the rear, WC, wash hand basin, shower cubicle and a radiator.



## Outside

### Gardens

Front - Good sized laid lawn to the front surrounded by a low wall and mature trees. Offering side access and two entry points into the home.

Rear - Spacious garden with side access, garage access, a laid lawn in the background and gravel area in the foreground. This lovely space features a rotary clothesline and several potting areas. Planting beds run along the boundary wall, adding greenery and seasonal colour.



### Garage

Single garage set back slightly from the property with up and over door, glazed windows and garden access.

### Parking

Driveway to the side with space for up to two vehicles.



**view this property online** [allenandharris.co.uk/Property/WST107923](https://www.allenandharris.co.uk/Property/WST107923)



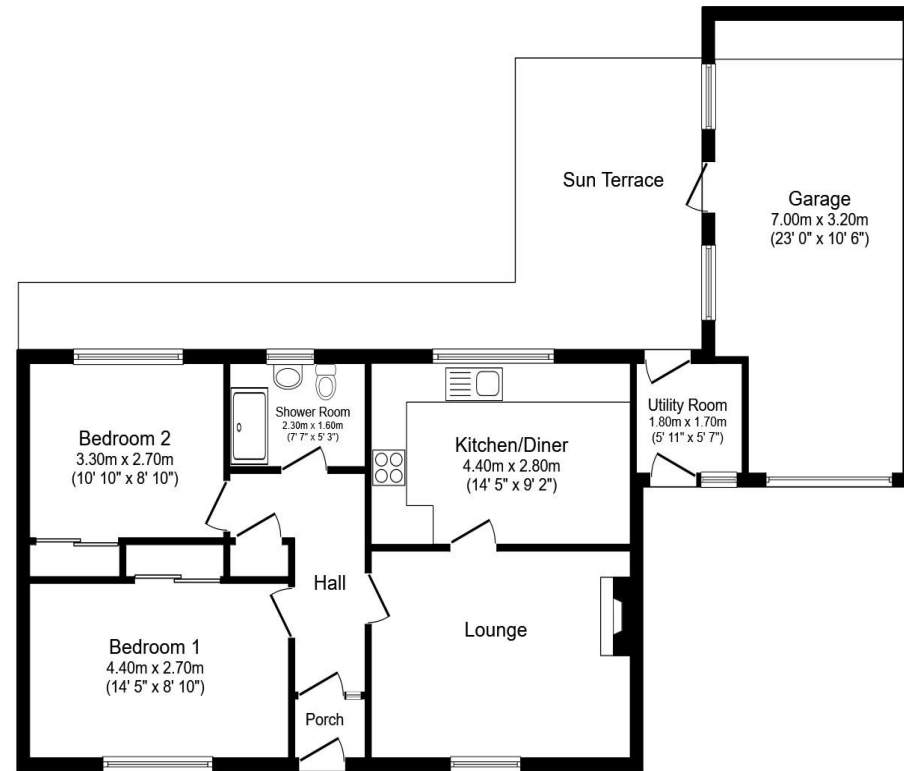
welcome to

## Storrige Road, Westbury

- NO ONWARD CHAIN!!!
- Two Bedroom Detached Bungalow
- Separate Utility Room
- Front & Rear Gardens
- Garage & Driveway Parking

Tenure: Freehold EPC Rating: D  
Council Tax Band: C

offers in excess of  
**£250,000**



Total floor area 87.0 m<sup>2</sup> (937 sq.ft.) approx

This floor plan is for illustrative purposes only. It is not drawn to scale. Any measurements, floor areas (including any total floor area), openings and orientation are approximate. No details are guaranteed, they cannot be relied upon for any purpose and they do not form part of any agreement. No liability is taken for any error, omission or misstatement. A party must rely upon its own inspection(s). Powered by [www.propertybox.io](http://www.propertybox.io)



**view this property online** [allenandharris.co.uk/Property/WST107923](http://allenandharris.co.uk/Property/WST107923)



Property Ref:  
WST107923 - 0007

1. MONEY LAUNDERING REGULATIONS Intending purchasers will be asked to produce identification documentation at a later stage and we would ask for your co-operation in order that there is no delay in agreeing the sale. 2. These particulars do not constitute part or all of an offer or contract. 3. The measurements indicated are supplied for guidance only and as such must be considered incorrect. Potential buyers are advised to recheck measurements before committing to any expense. 4. We have not tested any apparatus, equipment, fixtures or services and it is in the buyers interest to check the working condition of any appliances. 5. Where an EPC, or a Home Report (Scotland only) is held for this property, it is available for inspection at the branch by appointment. If you require a printed version of a Home Report, you will need to pay a reasonable production charge reflecting printing and other costs. 6. We are not able to offer an opinion either written or verbal on the content of these reports and this must be obtained from your legal representative. 7. Whilst we take care in preparing these reports, a buyer should ensure that his/her legal representative confirms as soon as possible all matters relating to title including the extent and boundaries of the property and other important matters before exchange of contracts.



**01373 822457**



[Westbury@allenandharris.co.uk](mailto:Westbury@allenandharris.co.uk)



15A Warminster Road, WESTBURY, Wiltshire,  
BA13 3PD



[allenandharris.co.uk](http://allenandharris.co.uk)