



Bedford Road, N2
London

£1,395,000

This beautiful and stylish four double-bedroom period family home is situated on Bedford Road, one of the popular 'county roads', just north of Fortis Green. Originally a three-bedroom house, it has been totally remodelled by the current owners with a substantial two-storey rear extension and loft conversion, creating a sleek, contemporary home with a calm, natural tone throughout.

The ground floor has been thoughtfully reconfigured and flows beautifully. The welcoming hallway leads to a charming front reception room with a wood-burning stove. To the rear is the impressive reception/kitchen/diner, which is flooded with natural light from a large overhead glazed panel and bi-fold doors that open directly onto the garden. The fully fitted kitchen features a central island and the whole space is cleverly zoned to create distinct sitting, cooking and dining areas. Wood flooring with underfloor heating runs throughout the entire ground floor. A downstairs WC completes this level, along with useful understairs storage.

Upstairs, the first floor offers three double bedrooms — one spanning the full width of the house to the front, and another with modern French doors leading out to a private roof terrace. These are served by a modern shower room. The loft conversion has created a wonderful principal bedroom suite with beautiful rear views, a modern en-suite bathroom and a good-sized dressing room, both with Velux windows to the front.





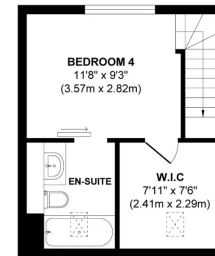
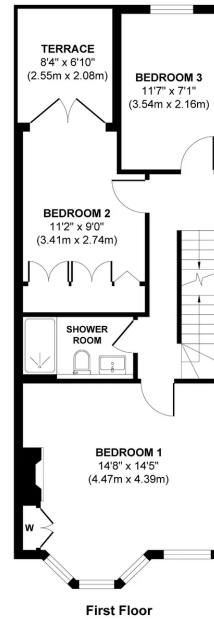
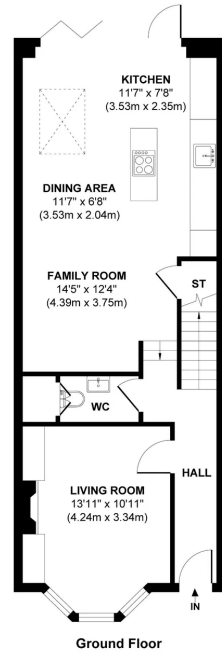
Outside, the rear garden is a real joy. With the bi-fold doors open, there is a wonderful inside-outside feel. A private paved patio leads onto the main garden area, which is also paved, with mature shrubs and planting, including a stunning wisteria.

The location is excellent. Bedford Road is one of East Finchley's popular 'county roads', quietly positioned yet with all the amenities of East Finchley on your doorstep, including the Underground station. Coldfall Wood and Cherry Tree Wood are both close by for lovely walks, and the area is well served by desirable primary and secondary schools.

A beautifully renovated and stylish period family home with excellent extension work and a fabulous layout ~ early viewing is highly recommended.

Please Quote Ref: AW1324





Second Floor

Approx. Gross Internal Floor Area 1,345 sq. ft / 125.00 sq. m.

Illustration for identification purposes only, measurements are approximate and not to scale, unauthorised reproduction is prohibited.

Amanda Walker

07817 598 309

amanda.walker@expuk.com

<https://amandawalker.exp.uk.com>