

Unit 6 13 Burton Place, Manchester, Lancashire, M15 4PT  
Tel: 0161 637 8336  
Email: [contactus@ascendproperties.com](mailto:contactus@ascendproperties.com)  
[www.ascendproperties.com](http://www.ascendproperties.com)

# Ascend

Built on higher standards



## Three60, Manchester, Offers In Excess Of £370,000

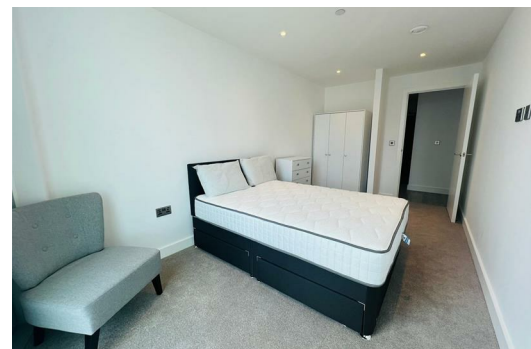
\*Buy To Let Interment Only\* Tenanted Until August 2026 - £2000pcm

Welcome to Three60, where city living really does come full circle. Perched proudly on the 9th floor, this stunning two-bedroom apartment offers sky-high style and luxury living with a view.

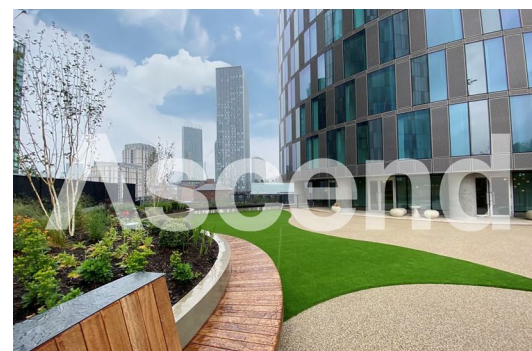
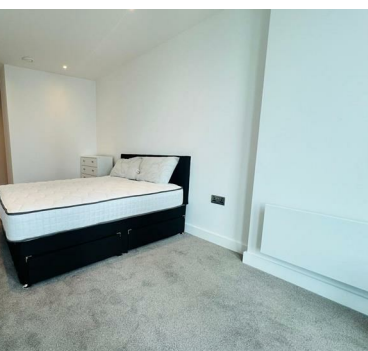
Step inside and you'll instantly feel on top of the world. The spacious open-plan living and kitchen area is the real show-stopper, perfectly designed for entertaining guests, hosting dinner parties, or simply putting your feet up after a long day (wine optional, views included). This is a space that truly raises the bar.

The apartment boasts two generously sized bedrooms, with the master bedroom stepping it up a level thanks to its dressing area and sleek en-suite bathroom. With two bathrooms in total, morning routines are smooth, stress-free, and queue-free, because luxury should never involve waiting.

And when it comes to amenities, Three60 doesn't miss a beat. Residents enjoy access to executive lounges, a communal garden, stylish co-working spaces, and a fully equipped gym, whether you're working, working out, or working on your social life.





[illegible]

**Energy Efficiency Rating**

Entity	Current	Projected
EU	65	65
UK	65	65

**Environmental Impact (CO<sub>2</sub>) Rating**

Entity	Current	Projected
EU	65	65
UK	65	65

**Energy and Water**

Entity	Current	Projected
EU	65	65
UK	65	65

**Environmental Impact (CO<sub>2</sub>) Rating**

Entity	Current	Projected
EU	65	65
UK	65	65

**Ascend**  
Built on higher standards