



Probert Road, SW2

£700,000

Dexters



Probert Road, SW2

A beautifully converted former bakery, this unique home sits on the corner of Probert Road in a quiet and sought after part of Brixton. Blending Victorian character with contemporary design, the property offers two well-proportioned bedrooms, a stylish bathroom, and a private courtyard garden. The lower ground floor provides an impressive open plan kitchen and living space, ideal for entertaining, with bi fold doors opening onto the garden. Thoughtfully designed throughout, the home maximises light and space, including a cleverly converted larder.

Probert Road is a quiet residential road in the heart of SW2, ideally positioned between Brixton and Clapham North. The area offers a great mix of local amenities, including cafés, restaurants, and shops, along with excellent transport links via the Victoria and Northern lines. Brockwell Park is also within easy reach, providing attractive green space and leisure facilities nearby.

Features

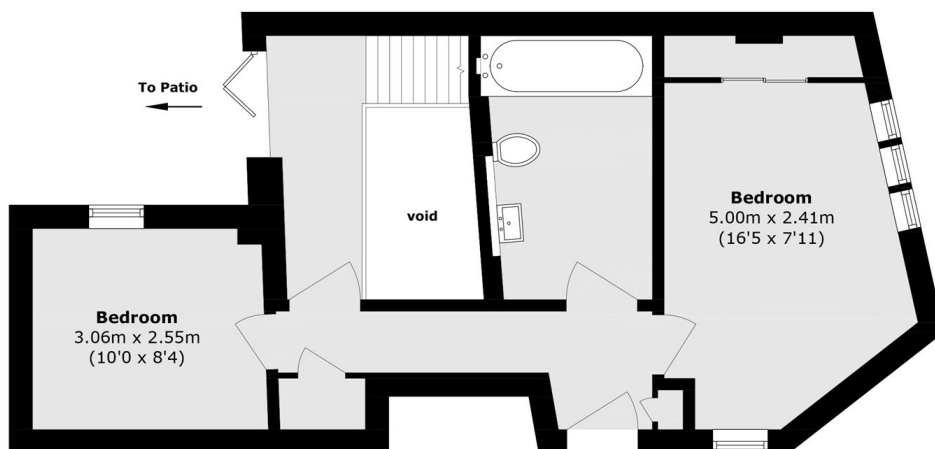
- Private Garden
- Split Level
- Maisonette
- Share of Freehold



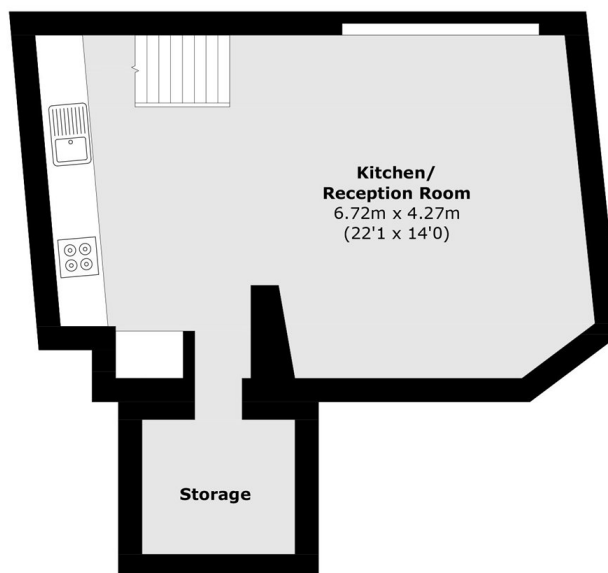




Probert Road, London, SW2



Ground Floor



Lower Ground Floor

Total area (approx.): 77.4 sq. m (833.1 sq. ft)