

An aerial photograph of a coastal city at sunset. The sky is a mix of blue and orange, with wispy clouds. In the background, there are mountains and a large body of water. The city below is densely packed with buildings and greenery. The text "18 INDIVIDUALLY DESIGNED SUSTAINABLE VILLAS" is overlaid in white, bold, sans-serif font in the center of the image.

18 INDIVIDUALLY DESIGNED SUSTAINABLE VILLAS

VILLA
N°15

VILLA Nº15

Villa Nº15 sits on a south-southwest facing plot, the largest plot in the development, and enjoys magnificent views straight across the Mediterranean. The carefully thought-out orientation of the villa ensures uninterrupted sea views and complete privacy. The villa has ample terraces which make the most of the fabulous Marbella climate. The landscaped garden can easily accommodate an organic vegetable garden, if so desired. In key parts of the villa the windows disappear into the walls, framing the undisturbed, panoramic views of the idyllic natural surroundings. There are four spacious ensuite bedrooms, with the Master Suite and one guest bedroom having their own private terraces. Built over four floors with a huge basement that can be customised to requirements, this is a perfect family home.





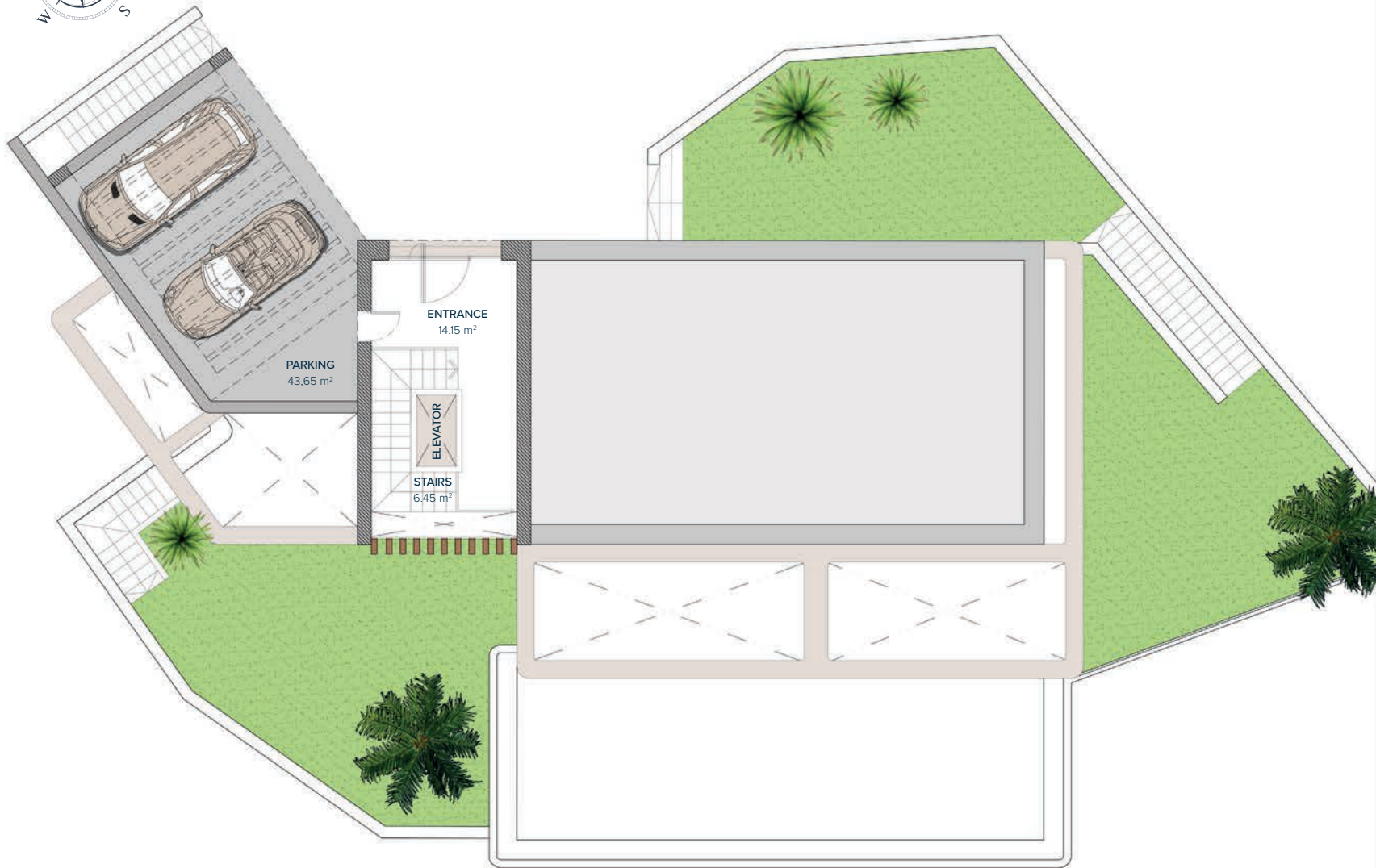
VILLA Nº15

SECOND FLOOR	20,98 m ²
FIRST FLOOR	144,89 m ²
GROUND FLOOR	113,05 m ²
BASEMENT	259,10 m ²
TOTAL	538,02 m²

TERRACES	22,60 m ²
PERGOLAS	38,67 m ²
CARPORT	45,91 m ²
COMUN AREAS	8,70 m ²
TOTAL	653,90 m²

PLOT	10.005,00 m²
GARDEN	199,33 m ²
SWIMMING POOL	56,45 m ²
TOTAL USEFUL AREA	497,39 m²
DECREE 218/2005	

These images are not contractual but only for illustrative purposes. The images are subject to technical, legal or commercial modifications approved by the project management or the competent authority. The 3D images corresponding to the facades, common elements, and the rest of the spaces are merely indicative and will be subject to verification or Modification in the technical projects. The furniture of the 3D images is not included and the equipment of the villas will be indicated in the corresponding building and quality specifications. The energy certification corresponds with the one established in the project in process. All the information and documentation will be provided according to the terms established in the Royal Decree 515/1989 and in the rest of the autonomous or state regulations currently in force that could complement the Mentioned Decree.



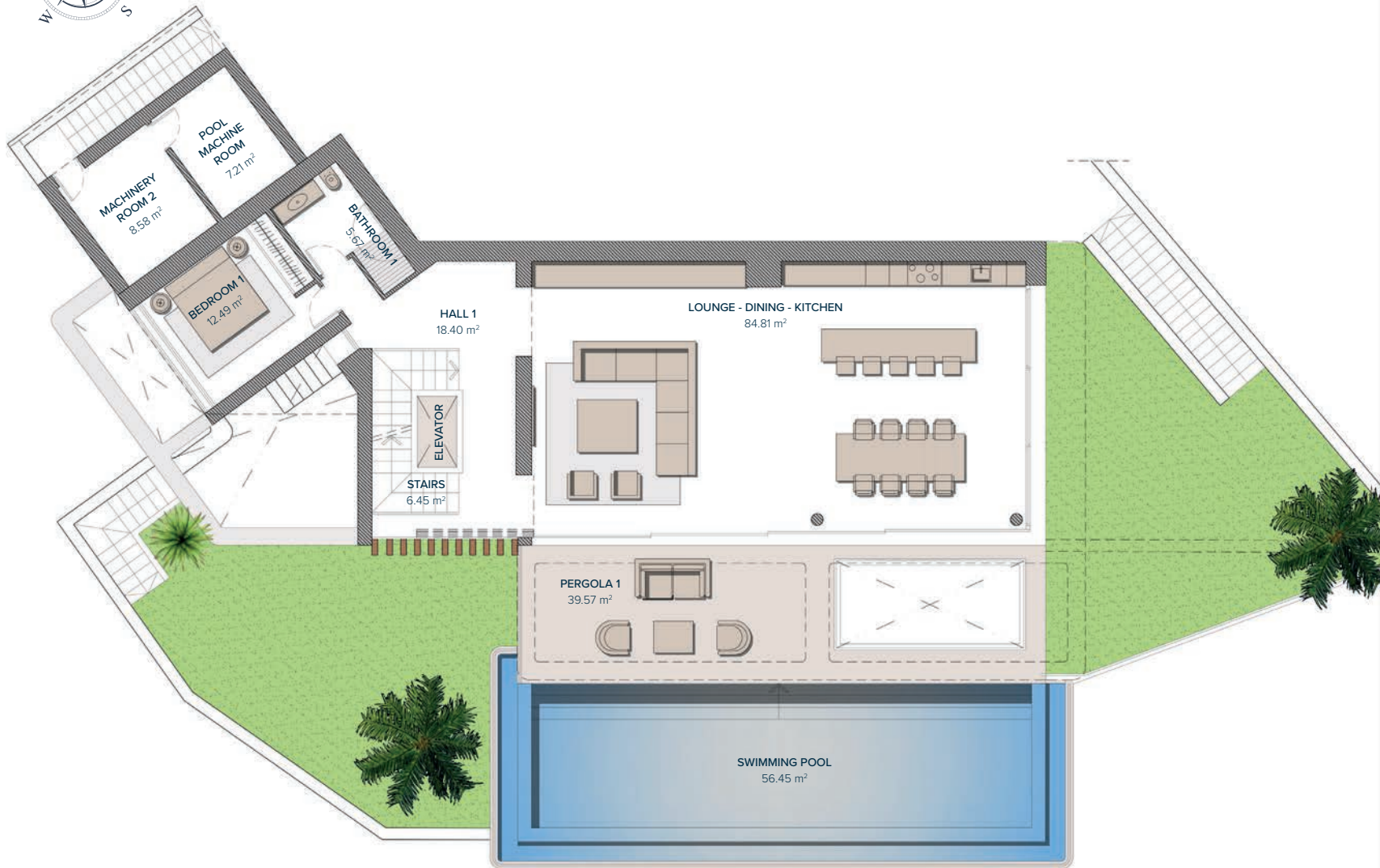
VILLA Nº15 SECOND FLOOR

ACCESS	14,15 m ²
STAIRS	6,45 m ²
TOTAL	20,60 m²
PARKING (PERGOLA)	43,65 m ²
TOTAL	43,65 m²

0 1 2 3 4 5
GRAPHIC SCALE 1:100

Entrance	2
	1
	0
	-1

These images are not contractual but only for illustrative purposes. The images are subject to technical, legal or commercial modifications approved by the project management or the competent authority. The 3D images corresponding to the facades, common elements, and the rest of the spaces are merely indicative and will be subject to verification or Modification in the technical projects. The furniture of the 3D images is not included and the equipment of the villas will be indicated in the corresponding building and quality specifications. The energy certification corresponds with the one established in the project in process. All the information and documentation will be provided according to the terms established in the Royal Decree 515/1989 and in the rest of the autonomous or state regulations currently in force that could complement the Mentioned Decree.



VILLA Nº15

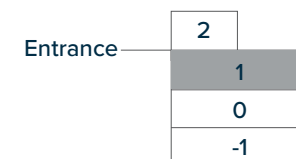
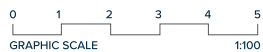
FIRST FLOOR

LIVING AREA

HALL 1	18,40 m ²
STAIRS	6,45 m ²
LOUNGE-DINING - KITCHEN	84,81 m ²
BATHROOM 1	5,67 m ²
BEDROOM 1	12,49 m ²
TOTAL	127,82 m²

PERGOLAS & TERRACES

PERGOLA 1	39,57 m ²
MACHINERY ROOM 2	8,58 m ²
POOL MACHINE ROOM	7,21 m ²
TOTAL	39,57 m²



These images are not contractual but only for illustrative purposes. The images are subject to technical, legal or commercial modifications approved by the project management or the competent authority. The 3D images corresponding to the facades, common elements, and the rest of the spaces are merely indicative and will be subject to verification or Modification in the technical projects. The furniture of the 3D images is not included and the equipment of the villas will be indicated in the corresponding building and quality specifications. The energy certification corresponds with the one established in the project in process. All the information and documentation will be provided according to the terms established in the Royal Decree 515/1989 and in the rest of the autonomous or state regulations currently in force that could complement the Mentioned Decree.



VILLA Nº15

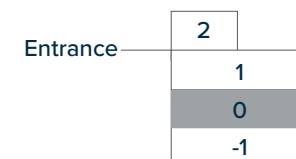
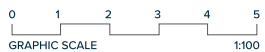
GROUND FLOOR

BEDROOMS

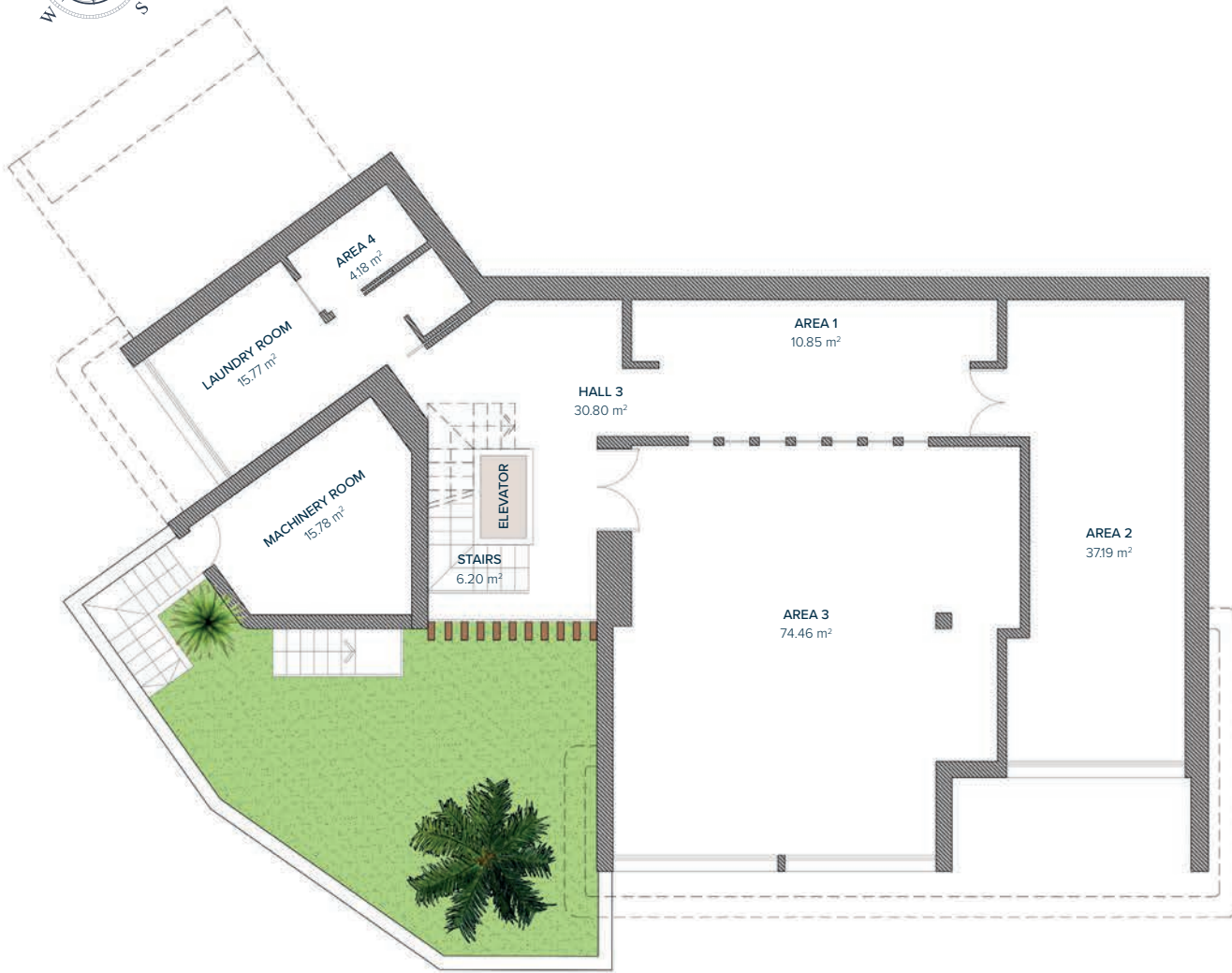
HALL 2	19,26 m ²
STAIRS	8,87 m ²
BATHROOM 2	4,35 m ²
BEDROOM 2	14,72 m ²
BATHROOM 3	4,60 m ²
BEDROOM 3	16,42 m ²
BATHROOM 4	4,95 m ²
BEDROOM 4	17,76 m ²
TOTAL	90,93 m²

PERGOLAS & TERRACES

PERGOLA 2	4,72 m ²
TERRACE 1	17,89 m ²
TOTAL	22,61 m²



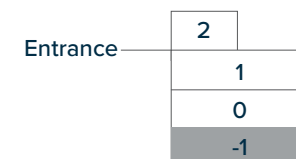
These images are not contractual but only for illustrative purposes. The images are subject to technical, legal or commercial modifications approved by the project management or the competent authority. The 3D images corresponding to the facades, common elements, and the rest of the spaces are merely indicative and will be subject to verification or Modification in the technical projects. The furniture of the 3D images is not included and the equipment of the villas will be indicated in the corresponding building and quality specifications. The energy certification corresponds with the one established in the project in process. All the information and documentation will be provided according to the terms established in the Royal Decree 515/1989 and in the rest of the autonomous or state regulations currently in force that could complement the Mentioned Decree.



VILLA Nº15

BASEMENT

HALL 3	30,80 m ²
STAIRS	6,20 m ²
AREA 1	10,85 m ²
AREA 2	37,19 m ²
AREA 3	74,46 m ²
AREA 4	4,18 m ²
LAUNDRY ROOM	15,77 m ²
MACHINERY ROOM	15,78 m ²
PATIO (ELEVATOR)	1,80 m ²
TOTAL	197,03 m²



These images are not contractual but only for illustrative purposes. The images are subject to technical, legal or commercial modifications approved by the project management or the competent authority. The 3D images corresponding to the facades, common elements, and the rest of the spaces are merely indicative and will be subject to verification or Modification in the technical projects. The furniture of the 3D images is not included and the equipment of the villas will be indicated in the corresponding building and quality specifications. The energy certification corresponds with the one established in the project in process. All the information and documentation will be provided according to the terms established in the Royal Decree 515/1989 and in the rest of the autonomous or state regulations currently in force that could complement the Mentioned Decree.

VILLA Nº15

