



Ringford Road, SW18

£525,000

Dexters



Ringford Road, SW18

A beautiful one bedroom Victorian conversion with a share of the freehold and private garden. The property offers wooden floors, a recently renovated bathroom, a smart kitchen and a large south facing private garden directly accessed from the flats living room. The flat also has potential to extend via a side return extension (SSTP).

Ringford Road is a quiet, highly sought after road between East Putney, Wandsworth Town and Southfields. There are plenty of great options for transport into central London or out of London via the A3. Wandsworth Park and King George's park are a short distance away.

Features

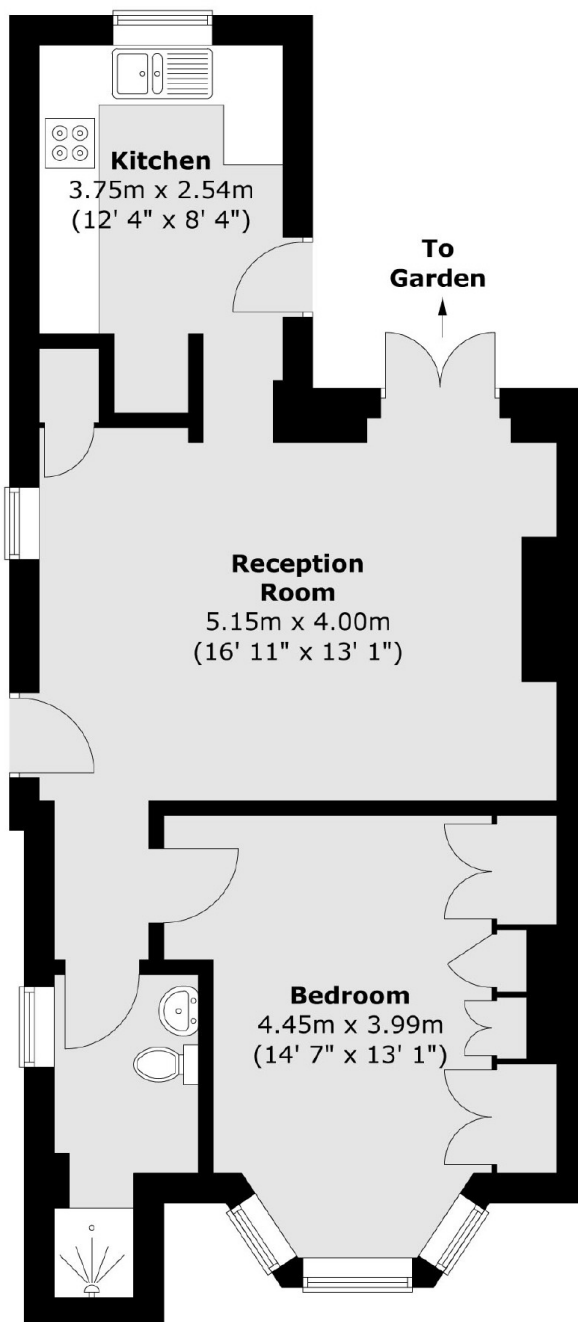
- South Facing Garden
- Chain Free
- Victorian Conversion
- Stylish Design
- One Bedroom
- Share of Freehold







Ringford Road, London, SW18



Total area (approx.) : 51.2 sq. m (551 sq. ft)