

## Lexham Gardens, W8

£3,250 Per calendar month

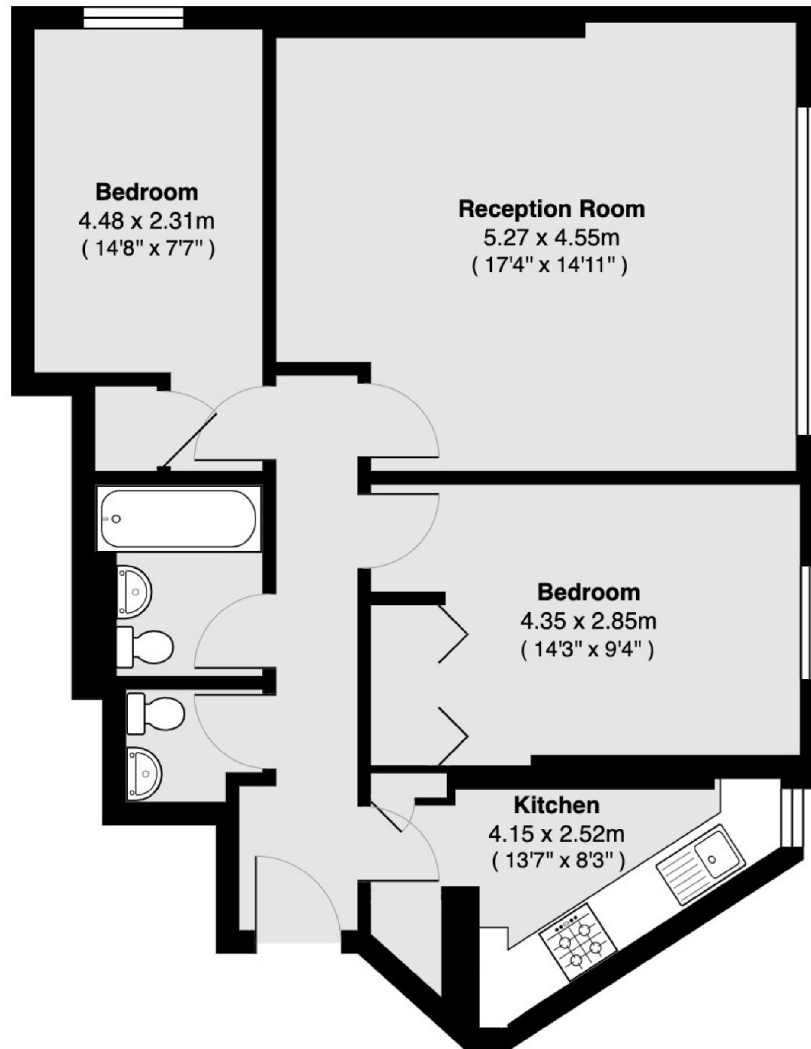
A bright and spacious three double bedroom flat located on the third floor and on the sought after Lexham Gardens. The flat benefits from lift access and access to the communal gardens and separate WC.

Located between Gloucester Road and Kensington High Street with a wide choice of shops and restaurants including Waitrose, Starbucks and Marks and Spencer's.

### Features

- Three Double Bedrooms
- Separate Kitchen
- Lift
- Communal Gardens
- Furnished
- Lexham Gardens

# Lexham Gardens, London, W8



**Total area 66.0 sq m ( approx ) ( 711 sq ft approx )**