



**Guide Price**  
**£350,000**

**Freehold**

2x  2x  1x 

**Seaway Gardens, St  
Mary's Bay, Romney  
Marsh, Kent, TN29**

**OVER 60?**

Secure this property  
for up to **59% less!**

*Wards*  
Helping you move forwards



## Main features

- Exceptional modernised home ready to move straight into
- Quiet non-estate location
- Generous garden with decked area for entertaining
- Log burners in lounge and dining area
- No onward chain
- Short walk to the beach

## Accommodation

### GROUND FLOOR

Entrance Hall

Lounge: 14'9 x 10'8 (4.50m x 3.25m)

Dining Area: 10'9 x 10'4 (3.28m x 3.15m)

Kitchen: 11'6 x 6'4 (3.51m x 1.93m)

Garden Room: 11'1 x 7'6 (3.38m x 2.29m)

Bedroom 1: 12'2 x 11'2 (3.71m x 3.41m)

Bedroom 2: 11'1 x 9'7 (3.38m x 2.92m)

En-Suite Shower Room

Wet Room

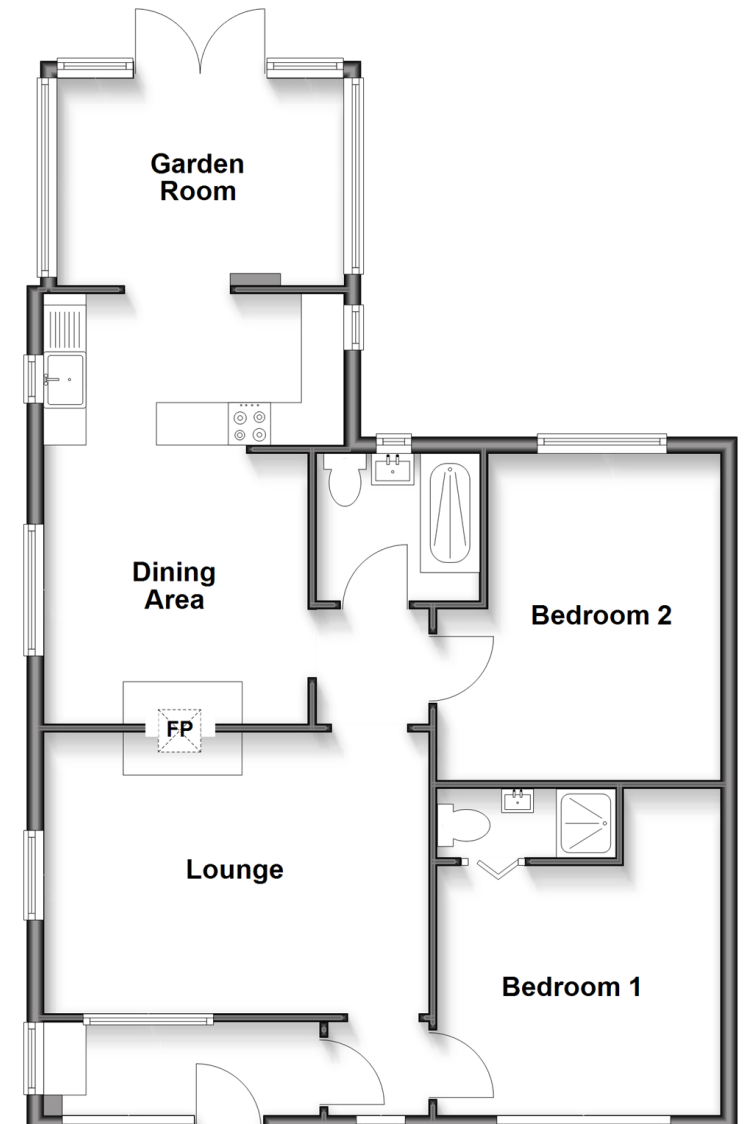
### OUTSIDE

Off Road Parking

Front & Rear Gardens

## Ground Floor

Approx. 77.5 sq. metres (834.1 sq. feet)



Call New Romney - 01797 363745 ■ [wardsofkent.co.uk](http://wardsofkent.co.uk)

- A private rental licensing scheme applies to some properties in this area, please check with the Local Authority before proceeding
- Legal advice should be taken to verify fixtures/fittings, planning, alterations and/or lease details
- Appliances & services are untested, dimensions are approximate and floor plans are not to scale
- Through a Homewise Home For Life Plan people aged 60+ can secure this property for up to 59% less, by purchasing a Lifetime Lease



13525897/20260228/CA/CA