



MULBERRY HOUSE

Arkesden, Saffron Walden



BEAUTIFULLY DESIGNED DETACHED HOME WITH AN OUTDOOR SWIMMING POOL AND POOL HOUSE.

Built 14 years ago in this enviable elevated location above the charming village of Arkesden, Mulberry House is finished to the highest standards over four well-proportioned floors, including a magnificent basement.

			EPC
5	5	4	B

Local Authority: Uttlesford District Council

Council Tax band: H

Services: Mains electricity and water, oil central heating, private drainage, underfloor heating

Tenure: Freehold

DESCRIPTION

From the large reception hallway, with staircases to the upper and lower floors, is a kitchen/family room bathed in light by numerous Georgian floor-to-ceiling windows and doors. Fitted with sleek stone countertops, the kitchen island, with an inset halogen hob, is edged by a stylish wooden bar. Built-in appliances and display lighting enhance the space. A useful utility and boot room lead to the rear.

The family dining, with ceiling lantern and triple aspect windows, leads to the swimming pool, and an impressive living room features dual-aspect windows, a brick fireplace, and an inset wood burner. Adjacent is a library/guest room with built-in cabinetry and en suite room. A cozy snug with a feature bay window and flame-effect gas fire (Calor gas) provides the perfect retreat overlooking the garden.

The lower floor offers a range of impressive lifestyle spaces. Off the spacious hallway, you'll find a gym with a sauna and shower, a dedicated cinema room, a games room, and a professional-grade golf simulator room. The first-floor landing stretches the depth of the house, leading to generous double bedrooms, including the primary suite, all with en suite bathrooms, with two of the rooms featuring dressing rooms. One of the rear-facing bedrooms enjoys a private balcony overlooking the garden. A further bedroom/office completes the first-floor accommodation.





LOCATION

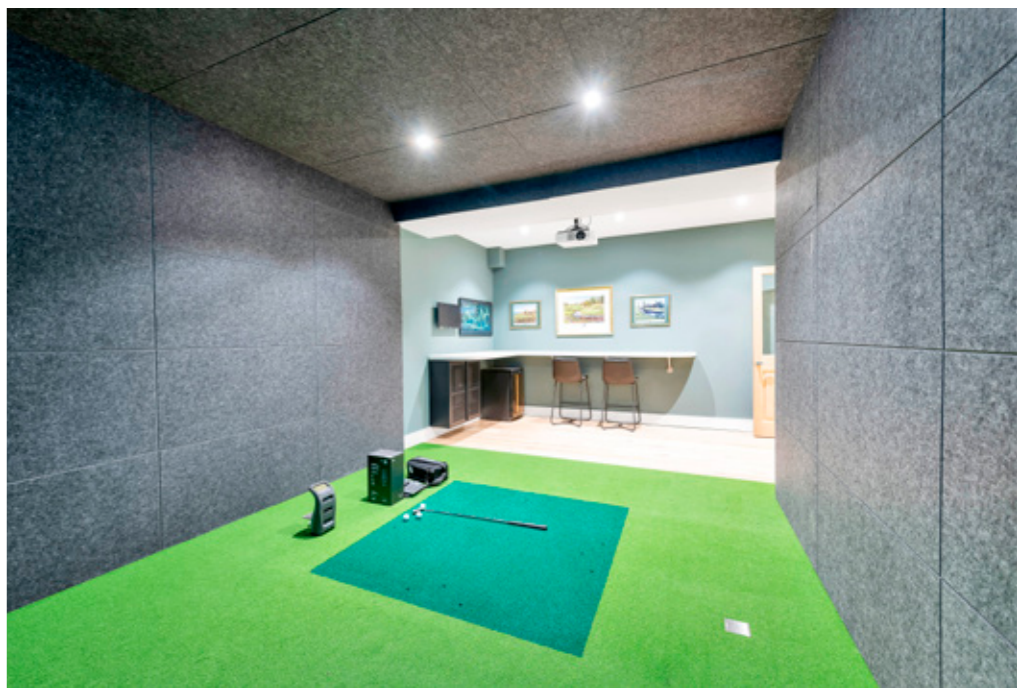
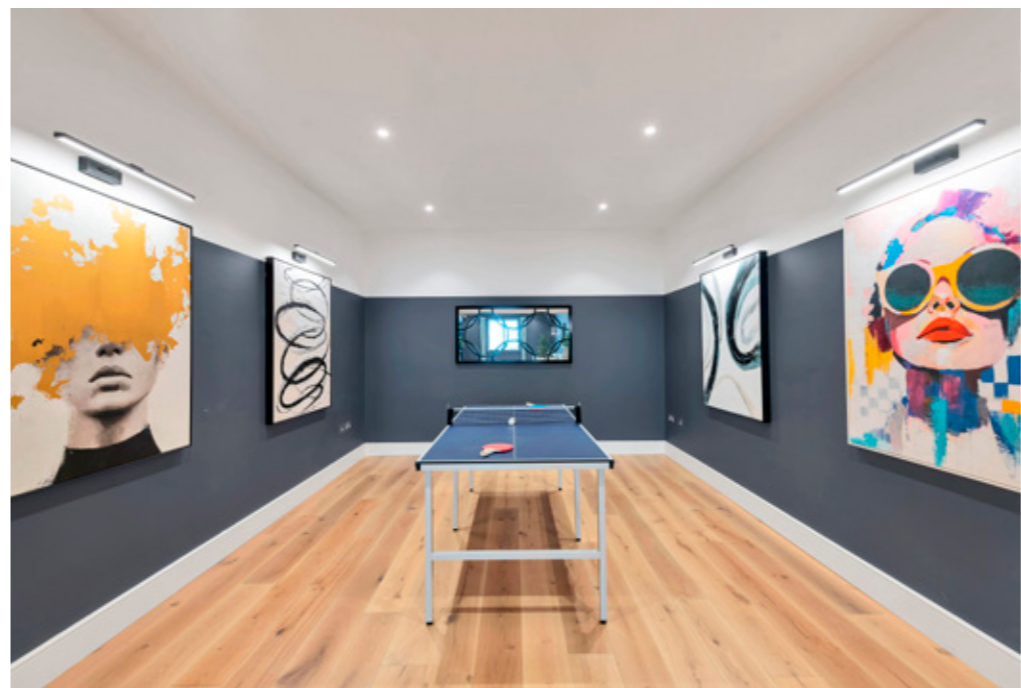
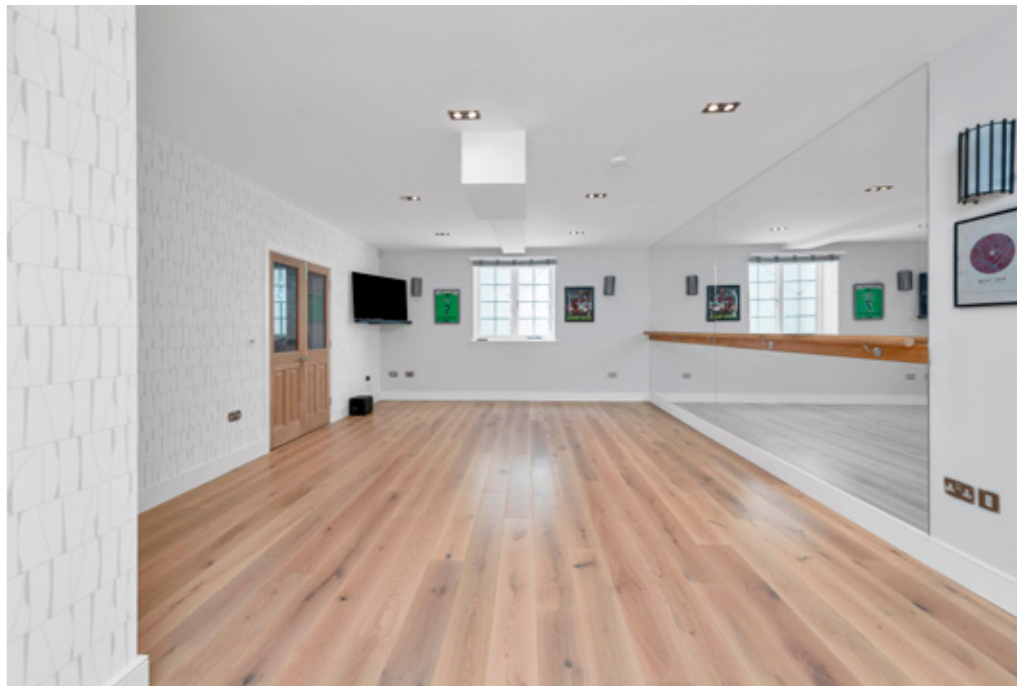
Arkesden is a highly sought-after north-west Essex village, blending period charm with modern convenience amidst stunning countryside. The village offers a church, village hall, the newly refurbished Axe & Compass public house, and a playing field. Just 2 miles away, Clavering provides additional amenities, including a village shop, public houses, and a primary school. The historic market town of Saffron Walden, 7 miles away, offers extensive shopping, educational, and leisure facilities, while the world-renowned City of Cambridge lies to the north. For commuters, Audley End mainline railway station (3 miles) provides services to London Liverpool Street.



OUTSIDE

Electric gates provide access to a spacious driveway, ample parking, a detached double garage, and a double cart-lodge with light and power. A self-contained duplex annexe presents an ideal space for guests. The heated swimming pool, set slightly elevated, is surrounded by paving and complemented by a charming pool house complete with a kitchenette – perfect for summer entertaining. The gardens, predominantly laid to lawn, are framed with bush and flower borders, and a Mulberry tree stands as a nod to the home's name, making this property an ideal haven for families or passionate gardeners alike.







Approximate Gross Internal Area = 831.6 sq m / 8951.1 sq ft

This plan is for layout guidance only. Not drawn to scale unless stated. Windows and door openings are approximate. Whilst every care is taken in the preparation of this plan, please check all dimensions, shapes and compass bearings before making any decisions reliant upon them. (ID767266)

We would be delighted
to tell you more.

Michael Houlden
01223 972910
michael.houlden@knightfrank.com

Knight Frank Cambridge
FORA, 20 Station Road, Cambridge
CB1 2JD

[knightfrank.co.uk](https://www.knightfrank.co.uk)

Your partners in property

1. Particulars: These particulars are not an offer or contract, nor part of one. You should not rely on statements given by KF East Anglia Ltd in the particulars, by word of mouth or in writing ("information") as being factually accurate about the property, its condition or its value. Neither KF East Anglia Ltd nor any joint agent has any authority to make any representations about the property, and accordingly any information given is entirely without responsibility on the part of KF East Anglia Ltd. 2. Material Information: Please note that the material information is provided to KF East Anglia Ltd by third parties and is provided here as a guide only. While KF East Anglia Ltd has taken steps to verify this information, we advise you to confirm the details of any such material information prior to any offer being submitted. If we are informed of changes to this information by the seller or another third party, we will use reasonable endeavours to update this as soon as practical. 3. Photos, Videos etc: The photographs, property videos and virtual viewings etc. show only certain parts of the property as they appeared at the time they were taken. Areas, measurements and distances given are approximate only. 4. Regulations etc: Any reference to alterations to, or use of, any part of the property does not mean that any necessary planning, building regulations or other consent has been obtained. A buyer must find out by inspection or in other ways that these matters have been properly dealt with and that all information is correct. 5. Fixtures and fittings: A list of the fitted carpets, curtains, light fittings and other items fixed to the property which are included in the sale (or may be available by separate negotiation) will be provided by the Seller's Solicitors. 6. VAT: The VAT position relating to the property may change without notice. 7. To find out how we process Personal Data, please refer to our Group Privacy Statement and other notices at <https://www.knightfrank.com/legals/privacy-statement>.

Particulars dated May 2026. Photographs and videos dated May 2026. All information is correct at the time of going to print. KF East Anglia Ltd, a limited liability company registered in England with registered number 16443611. Our registered office is at The Barn Hempland Barn, Ufford Road, Woodbridge, Suffolk, IP12 2QE. KF East Anglia Ltd is an independently owned member of the Knight Frank Network operating under licence from Knight Frank LLP. Each entity or practice in the Knight Frank global network is a distinct and separate legal entity. No Knight Frank entity acts as agent for, or has any authority to represent, bind or obligate in any way, any other Knight Frank entity. If you do not want us to contact you further about our services then please contact us by either calling 020 3544 0692, email to marketing.help@knightfrank.com or post to our UK Residential Marketing Manager at our registered office (above) providing your name and address.