



Price
£650,000

Freehold

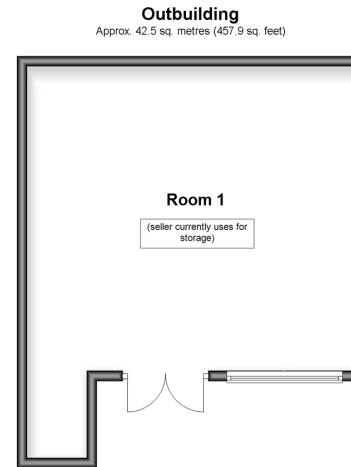
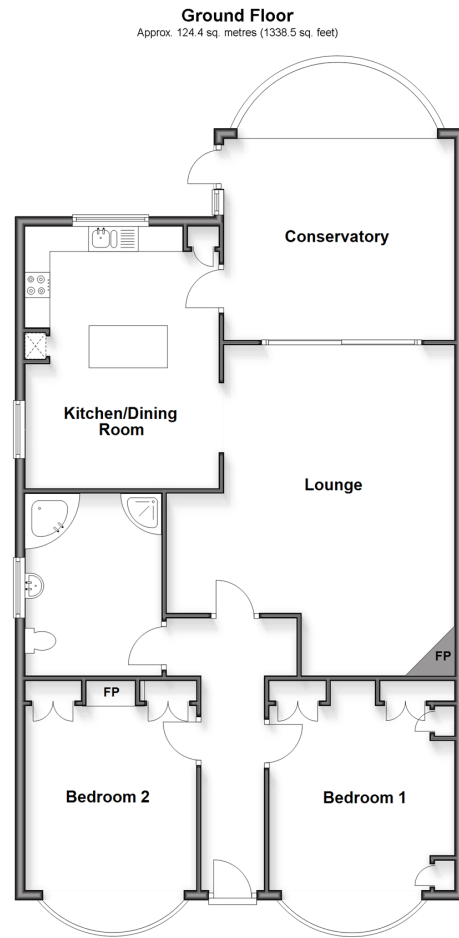
2x  1x  1x 

**Northumberland
Avenue, Hornchurch,
Essex, RM11**

OVER 60?

Secure this property
for up to **59% less!**

 **DOUGLAS
ALLEN**
Helping you move forwards



Accommodation

GROUND FLOOR

Hallway

Bedroom 1: 16'2 x 12'3 (4.93m x 3.74m)

Bedroom 2: 15'1 x 11'11 (4.60m x 3.63m)

Bathroom: 11'8 x 8'7 (3.56m x 2.62m)

Lounge: 21'8 x 15'3 (6.61m x 4.65m)

Kitchen/Dining Room: 17'3 x 11'6 (5.26m x 3.51m)

Conservatory: 18'5 x 15'2 (5.62m x 4.63m)

OUTSIDE

Out building/office : 22'0 x 19'4 (6.71m x 5.90m)

Rear Garden

Off Road Parking



Main features

- Large mature rear garden
- Outbuilding
- Bespoke kitchen with centre island
- Ample off road parking
- Close to Haynes Park
- Less than a quarter of a mile to Gidea Park Station

Nearest Schools

Primary Schools: Squirrels Heath Junior School 0.3 miles, Ardleigh Green Junior School 0.5 miles, Towers Junior School 0.7 miles
Secondary Schools: The Royal Liberty School 0.4 miles, The Frances Bardsley School for Girls 0.7 miles, The

Transport Information

Train Stations: Gidea Park 0.2 miles, Emerson Park 0.6 miles, Romford 1.3 miles, Upminster Bridge 1.6 miles, Hornchurch 1.7 miles

Address

Northumberland Avenue, Hornchurch, Essex, RM11

Directions

For directions to this property please contact us.



Call Hornchurch Branch 01708 437777 ■ douglasallen.co.uk



- A private rental licensing scheme applies to some properties in this area, please contact us before proceeding
- Appliances & services are untested, dimensions are approximate and floor plans are not to scale

- Legal advice should be taken to verify fixtures/fittings, planning, alterations and/or lease details
- Through a Homewise Home For Life Plan people aged 60+ can secure this property for up to 50% less, by purchasing a Lifetime Lease.



51916567/20250927/DT/DT