



Williamsburg Plaza, E14

£692 Per week

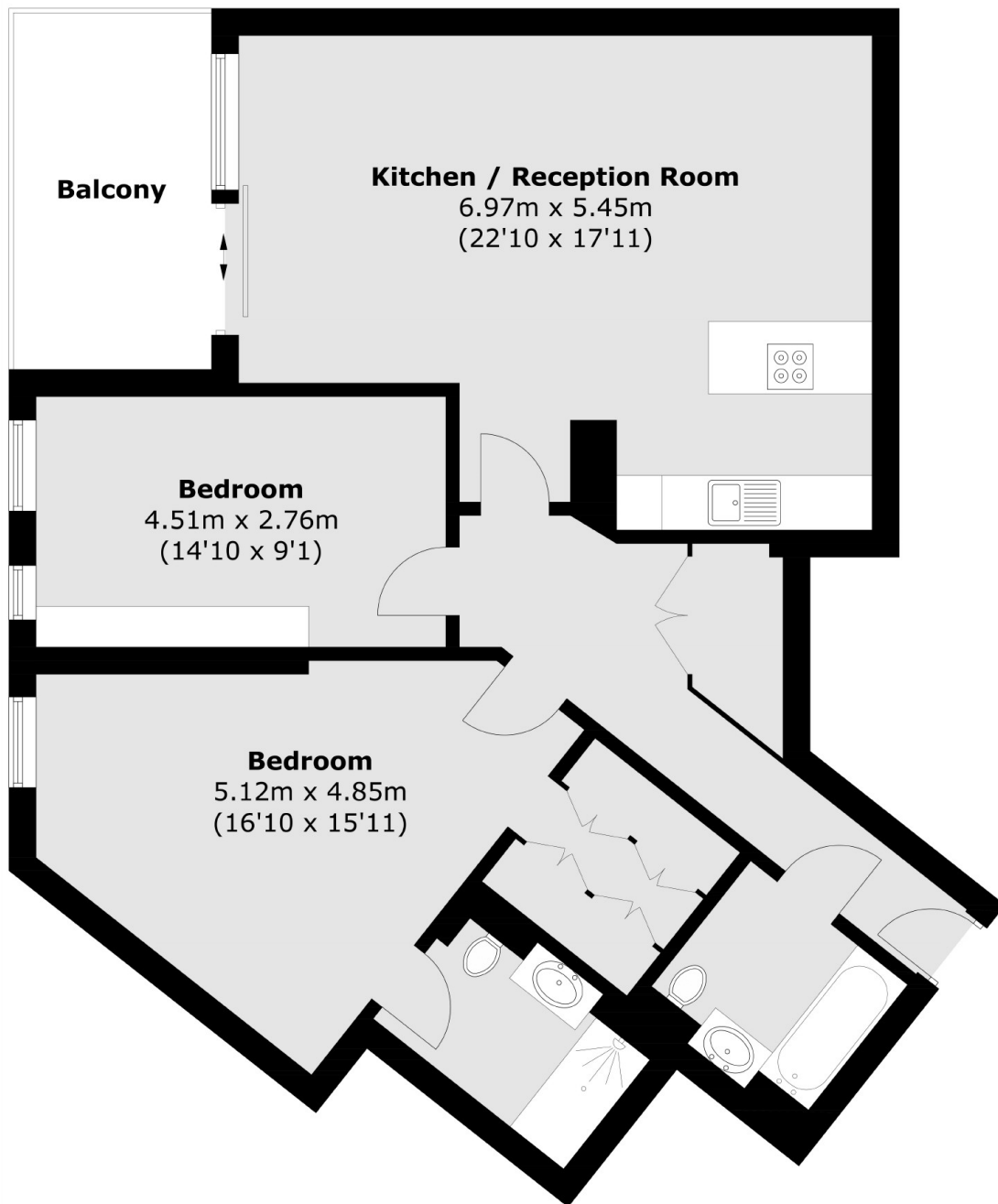
A two-bedroom apartment on the third floor of a popular development in Canary Wharf, spanning over 1,000 sq ft. The property is offered furnished, with off-street parking available by separate negotiation.

Manhattan Plaza is within walking distance of Canary Wharf and close to Blackwall DLR station, providing access into the City. Residents have access to an on-site concierge service, a gym, and a communal roof terrace.

Features

- Third Floor Position
- Over 1,000 Square Feet
- Two Double Bedrooms
- En-Suite & Family Bathroom
- Parking By Negotiation
- Concierge, Gym & Roof Terrace

Williamsburg Plaza, London, E14



Total area (approx.): 92.0 sq. m (990.3 sq. ft)
Balcony area (approx.): 8.6 sq. m (92.6 sq. ft)