

for sale

£310,000 Freehold



Chells Grove Birmingham B13 0NA

Beautiful Three-Bedroom Semi Detached Property in Chells Grove Billesley, south of Birmingham city centre with nearby areas Yardley Wood, Warstock and Highter's Heath. This property is close to local parks, schools, shops and transport links in and out of Birmingham City Centre. Beautiful Family Home!

Residential Sales & Lettings | Mortgage Services |
Conveyancing | Surveyors | Land & New Homes

- Energy Rating: C
- Spacious Lounge
- Fitted Kitchen with appliances - Extended.
- Ground Floor Bathroom with Shower
- Three Spacious Bedrooms



Property Details

Lounge 13' x 13' (3.96m x 3.96m)

Double Glazed Window

Radiator

Electric Fire

Understairs Storage

Kitchen 19' x 19' (5.79m x 5.79m)

Double Glazed Window

Double Glazed Patio Doors to Rear Garden

Electric Hob/Oven/Hood

Integrated Dishwasher

Kitchen extension - Not Concrete

Ground Floor Bathroom

Shower

Basin

Toilet

Bedroom One 13' x 10' (3.96m x 3.05m)

Double Glazed Window

Radiator

Storage Cupboard

Bedroom Two 13' x 9' (3.96m x 2.74m)

Double Glazed Window

Radiator

Bedroom Three 9' x 7' (2.74m x 2.13m)

Double Glazed Window

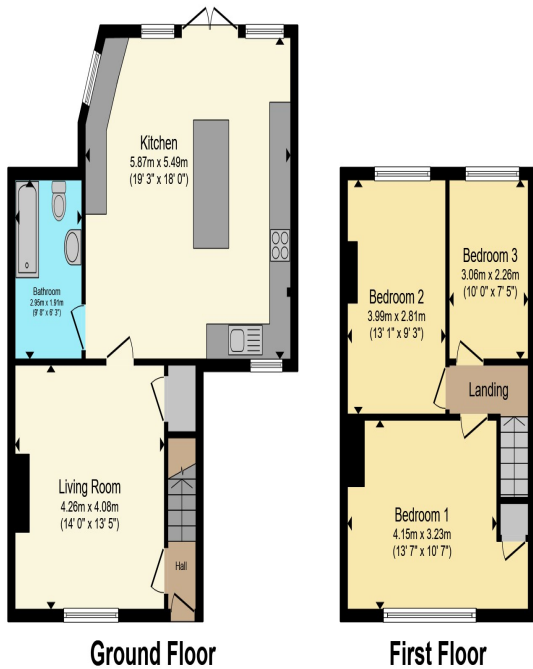
Radiator

Rear Garden

Patio Area

Driveway





Total floor area 97.9 m² (1,054 sq.ft.) approx

This floor plan is for illustrative purposes only. It is not drawn to scale. Any measurements, floor areas (including any total floor area), openings and orientation are approximate. No details are guaranteed, they cannot be relied upon for any purpose and they do not form part of any agreement. No liability is taken for any error, omission or misstatement. A party must rely upon its own inspection(s). Powered by www.propertybox.io



To view this property please contact Connells on

T 0121 443 3357
E kingsheath@connells.co.uk

93 High Street Kings Heath
 BIRMINGHAM B14 7BW

Property Ref: KTH310917 - 0004

Tenure: Freehold EPC Rating: C

Council Tax Band: B

1. MONEY LAUNDERING REGULATIONS Intending purchasers will be asked to produce identification documentation at a later stage and we would ask for your co-operation in order that there will be no delay in agreeing the sale. 2. These particulars do not constitute part or all of an offer or contract. 3. The measurements indicated are supplied for guidance only and as such must be considered incorrect. Potential buyers are advised to recheck measurements before committing to any expense. 4. We have not tested any apparatus, equipment, fixtures, fittings or services and it is in the buyers interest to check the working condition of any appliances.

Connells Residential is registered in England and Wales under company number 1489613, Registered Office is Cumbria House, 16-20 Hockliffe Street, Leighton Buzzard, Bedfordshire, LU7 1GN. VAT Registration Number is 500 2481 05.

see all our properties at www.connells.co.uk | www.rightmove.co.uk | www.zoopla.co.uk