



Heath Road, TW2

£1,700 Per calendar month

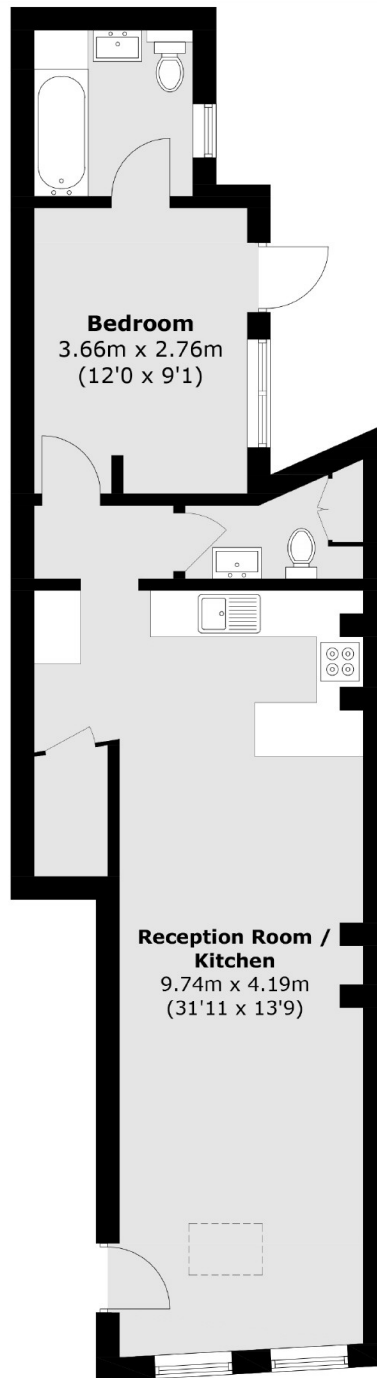
Available immediately and completely refurbished to an exceptional standard is this impressive one double bedroom ground floor garden flat which would make a perfect property for an individual or couple.

Heath Road is the high street running through the heart of the town centre and it offers a vast array of shops, pubs, café's and restaurants. Twickenham mainline station provides a fast train to London Waterloo and there are also various bus routes in and out of Twickenham and through to Richmond.

Features

- One Double Bedroom
- Private Garden
- Central Location
- Ground Floor
- No Onward Chain
- Completely Refurbished Throughout

Heath Road, Twickenham, TW2



Total area (approx.): 55.7 sq. m (599.5 sq. ft)