



## PINDOCK MEWS, W9

£2,850,000

Mews House  
Three Bedroom  
Three Bathrooms  
Newly refurbished  
Approximately 2,033sq ft  
Chain Free

@marshandparsons  
marshandparsons.co.uk

MARSH &  
PARSONS



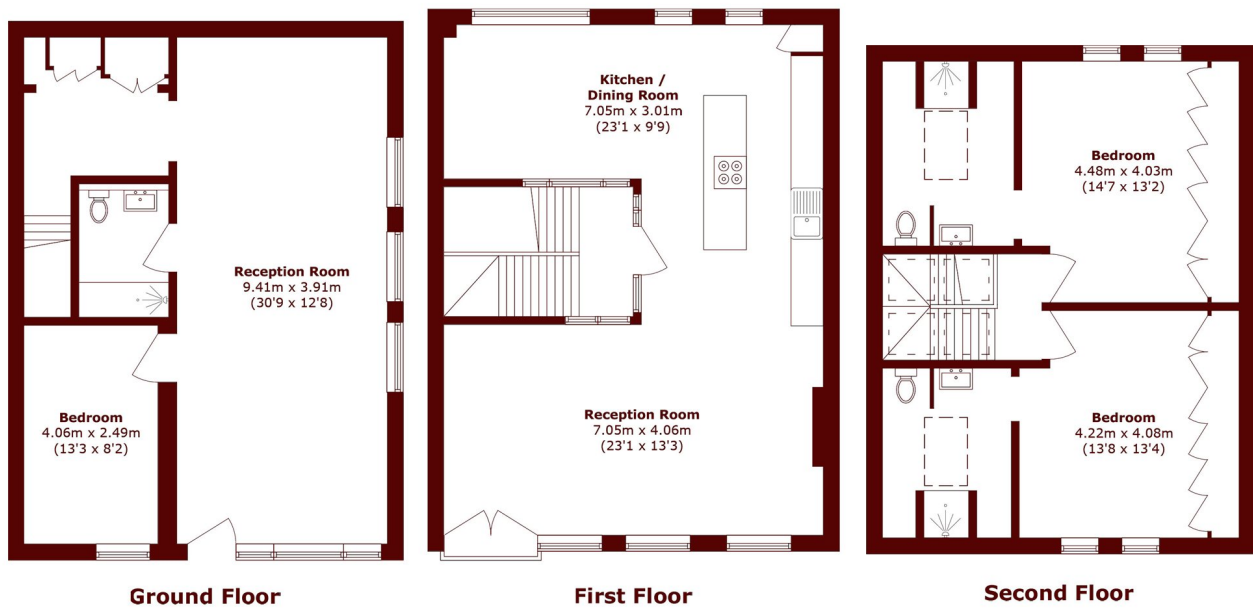
# ABOUT THE PROPERTY

Tucked away behind charming cobbled paving, this beautifully restored freehold mews house perfectly captures the character and privacy of mews living. Arranged over three floors and extending to over 2,000 sq ft, the house offers three spacious bedrooms, three beautifully finished bathrooms, two reception rooms including a stunning open plan kitchen and living space on the first floor meticulously designed for modern family life and entertaining.

Perfectly positioned, Pindock Mews is just a short walk from Warwick Avenue Underground Station (Bakerloo Line) and Paddington Station (Elizabeth line & Heathrow express). Surrounded by an array of boutique shops,



# STEP INSIDE PINDOCK MEWS



Total area (approx.): 188.9 sq. m (2033.3 sq. ft)

Little Venice  
020 7993 3050

Energy Rating: G We aim to make our particulars both accurate and reliable. However, they are not guaranteed; nor do they form part of an offer or contract. If you require clarification on any points then please contact us, especially if you're traveling some distance to view. Please note that appliances and heating systems have not been tested and therefore no warranties can be given as to their good working order

MARSH &  
PARSONS