



42 Silverdale Avenue, Worcester – WR5 1PX

Offers in Region of £800,000

HILLS
Estate Agents

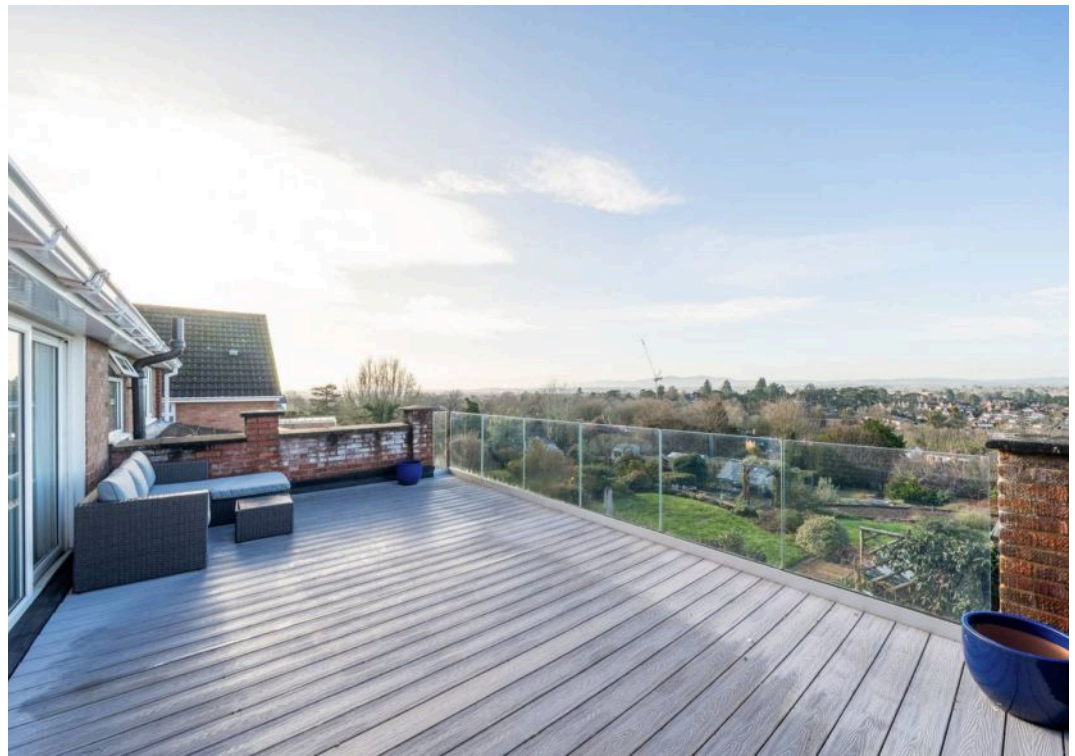
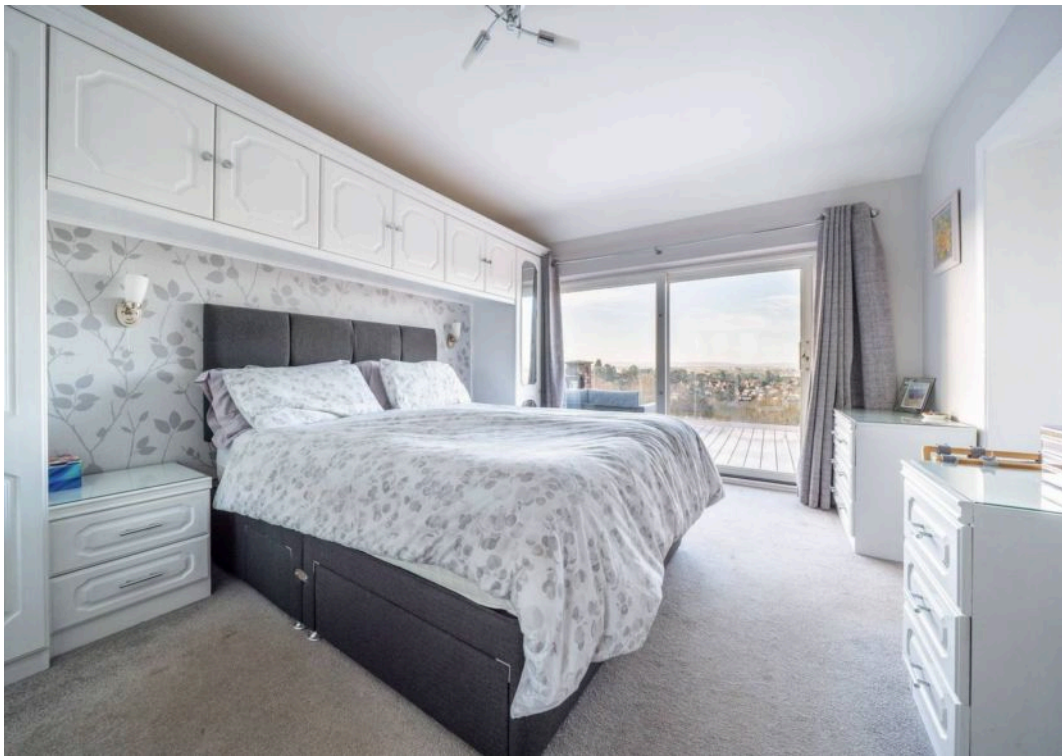
42 Silverdale Avenue

Worcester, Worcester

This impressive and substantial four bedroom detached family home is situated in a highly sought after cul-de-sac location, ideally placed for popular desirable schools, transports links including the M5 and local amenities with Waitrose within walking distance. With generous gardens boasting far reaching views toward the Malvern Hills, the property comprises spacious and versatile accommodation throughout, with a welcoming entrance hall with doors leading to a large sitting/dining room, a separate reception room, a large breakfast kitchen and a ground floor shower room. To the first floor are four bedrooms with en suite to bedroom one and a family bathroom. Also accessed from bedroom one is a large roof terrace to benefit from the spectacular views on offer. An integral garage adds further versatile space to the property. This home is an excellent choice for those seeking a family home in a desirable area. A viewing is highly recommended to fully appreciate the position the property boasts.

- Substantial Detached Family Home
- Sought After Cul-De-Sac Location
- Four Bedrooms
- Well Thought Out Generous Gardens
- Balcony Roof Terrace Accessed From Bedroom One
- Fantastic Views Toward The Malvern Hills
- Hot Tub & Sauna





Ground Floor



First Floor

