



Neasden Lane, NW10

TO LET - £1,800 Per Month

AVAILABLE TO LET is this well presented two bedroom Second Floor Flat, situated in the heart of Neasden.

The property comprises a bright open plan reception/kitchen with hard wood flooring, and two double bedrooms which are serviced by a three piece bathroom suite. Further benefits include off-street parking.

The property is ideally located to the local amenities of Neasden and is a short walk to the beautiful 86 acre Gladstone Park with its outdoor gym, tennis courts and cafes. Local transport links include Neasden Station (Jubilee-Zone 3).

- 2 bedroom flat offering 568 sq ft
- Open plan kitchen / reception
- Close to Neasden Jubilee Line Station (Zone 3)
- Off street parking
- Deposit: £2,192
- COUNCIL: Brent (B)



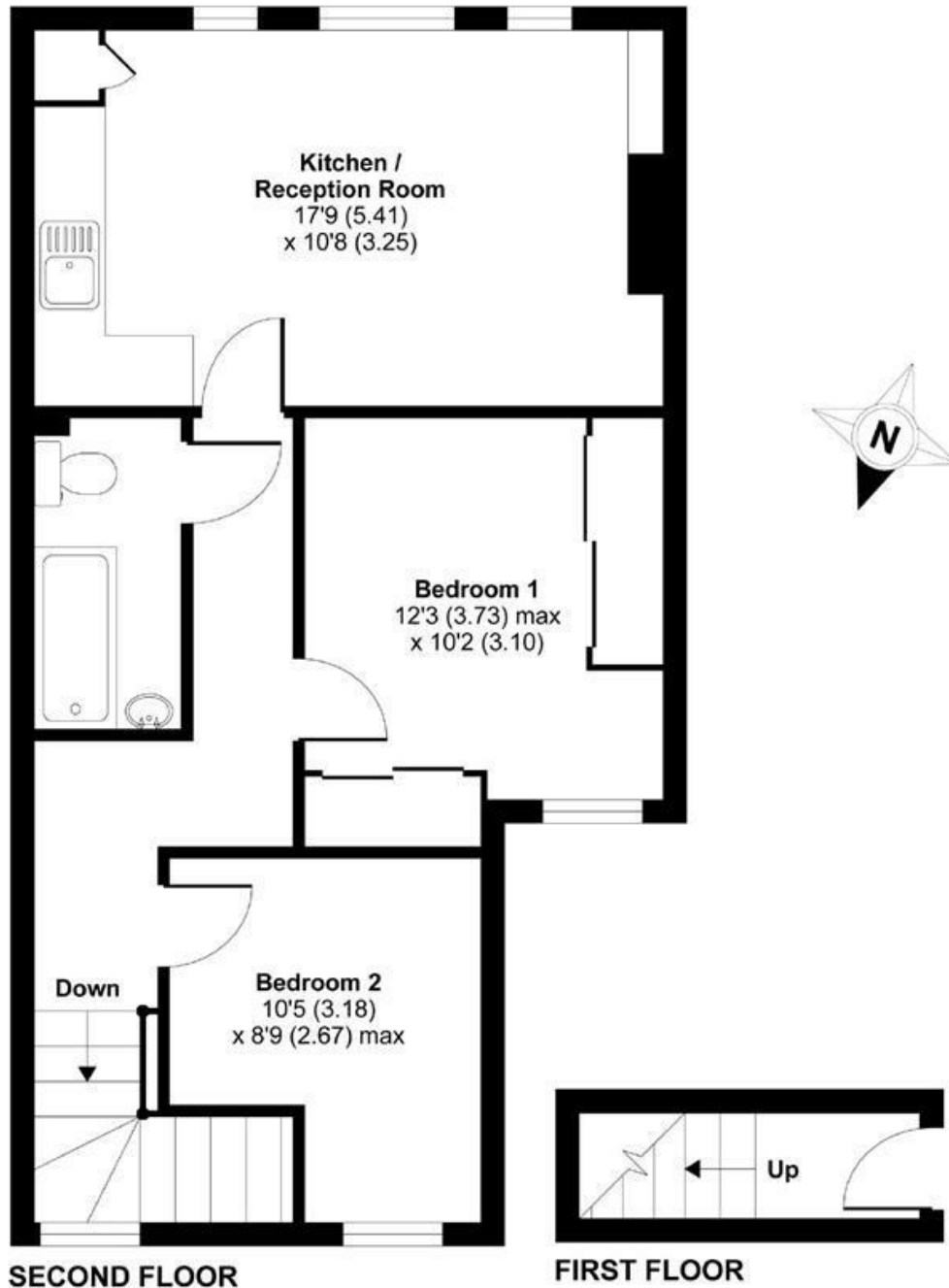
020 8450 9377

rentals@cameronsstiff.co.uk

cameronsstiff.co.uk

Neasden Lane, London, NW10

APPROX. GROSS INTERNAL FLOOR AREA 568 SQ FT 52.7 SQ METRES



Whilst every attempt has been made to ensure the accuracy of the floor plan contained here, measurements of doors, windows and rooms are approximate and no responsibility is taken for any error, omission or misstatement. These plans are for representation purposes only as defined by RICS Code of Measuring Practice and should be used as such by any prospective purchaser. Specifically no guarantee is given on the total square footage of the property if quoted on this plan. Any figure given is for initial guidance only and should not be relied on as a basis of valuation.

Copyright nichecom.co.uk 2015 Produced for Camerons Stiff & Co REF : 43919

EPC: D
Ref: 19248584

