



## Northcote Road, TW1

£1,100,000

This attractive three bedroom Victorian house situated in a quiet cul-de-sac in St Margarets combines period character with excellent potential. Offering a home that can be enjoyed now and adapted over time.

Northcote Road is a popular residential road only 0.4 miles from the River Thames and its tow path walks into Richmond. St Margarets main line station and shops are only 0.6 miles away. Old Deer Park is close by.

### Features

- Victorian House
- Three Bedrooms
- Period Features
- 100ft South-Facing Garden
- Potential To Extend (STPP)
- Quiet Residential Location



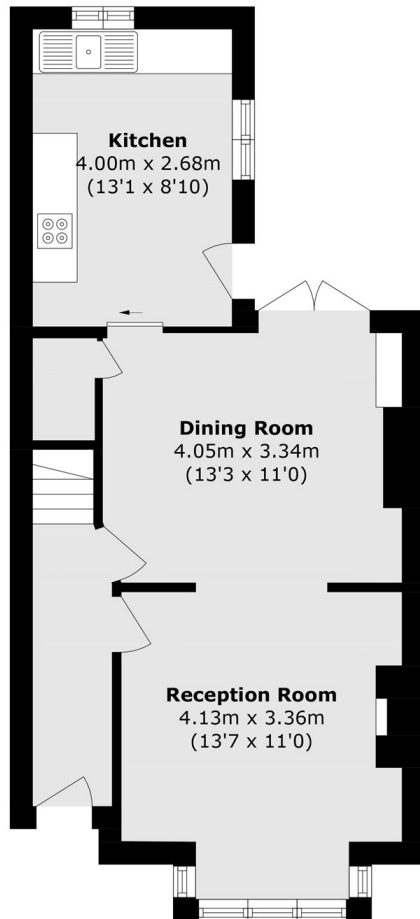
## Northcote Road, TW1

The ground floor features a bright double reception room with a bay window and a feature fireplace, creating a welcoming space for both living and dining. To the rear, a generous eat-in kitchen offers clear potential to extend into the side return (STPP) to create a larger family space. The 100ft south-facing mature garden is a real highlight of the property. Upstairs, there are three well proportioned bedrooms and a family bathroom. The principal bedroom at the front benefits from integrated wardrobes and good natural light.

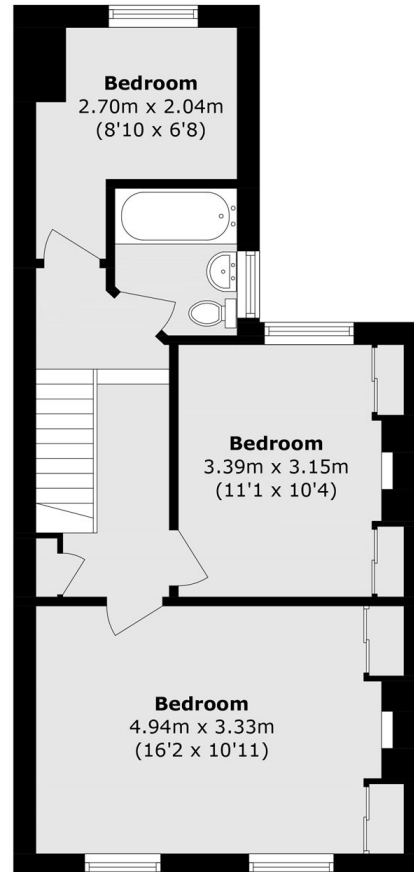
The house also offers scope to extend into the loft (STPP), providing an opportunity to add further bedrooms and a bathroom as needs evolve.



# Northcote Road, St Margarets, TW1



**Ground Floor**



**First Floor**

Total area (approx.): 91.2 sq. m (981.7 sq. ft)