



£1,200 pcm
Spire View, SO15

Lets Rent | Lets Sell
SOUTHAMPTON



 2
Bedrooms

 2
Bathrooms

15 London Road Southampton SO152AE |
enquiries@letsrentsouthampton.co.uk

02380 434448



The property is currently being refreshed with brand new flooring throughout and full redecoration, giving it a fresh and modern feel ready for the next tenant.

Inside, the apartment offers two well-proportioned double bedrooms, a spacious open-plan kitchen/lounge, and a main bathroom with shower over bath. One of the bedrooms also benefits from its own ensuite shower room with a separate WC, adding extra convenience and flexibility.

Situated on the second floor of the building, please note that there is no lift access.

The property is well positioned in the popular Shirley area, offering easy access to a wide range of local shops, supermarkets, cafes and everyday amenities. It is also conveniently located for access into Southampton city centre and is within easy reach of the main train station making it a great option for commuters

Let's Rent Southampton are delighted to bring to the market this modern two-bedroom second-floor apartment, ideally located in Shirley, Southampton, SO15 3NY.

The property is currently being refreshed with **brand new flooring throughout** and **full redecoration**, giving it a fresh and modern feel ready for the next tenant.

Inside, the apartment offers **two well-proportioned double bedrooms**, a **spacious open-plan kitchen/lounge**, and a **main bathroom with shower over bath**. One of the bedrooms also benefits from its own **en-suite shower room with a separate WC**, adding extra convenience and flexibility.

Situated on the **second floor** of the building, please note that there is **no lift access**.

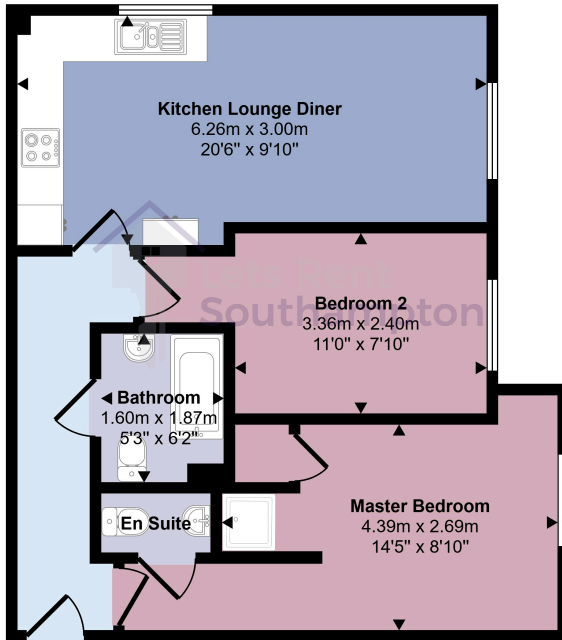
The property is well positioned in the popular **Shirley** area, offering easy access to a wide range of **local shops, supermarkets, cafes and everyday amenities**. It is also conveniently located for access into **Southampton city centre** and is within easy reach of the **main train station**, making it a great option for commuters.

Parking is limited, so please ask for further details.

This property will make a lovely home and early viewing is highly recommended.

Contact us today to arrange a viewing.

Approx Gross Internal Area
53 sq m / 569 sq ft



Floorplan

This floorplan is only for illustrative purposes and is not to scale. Measurements of rooms, doors, windows, and any items are approximate and no responsibility is taken for any error, omission or mis-statement. Icons of items such as bathroom suites are representations only and may not look like the real items. Made with Made Snappy 360.

Energy Efficiency Rating		
	Current	Potential
<i>Very energy efficient - lower running costs</i>		
(92+) A		
(81-91) B		
(69-80) C	76	76
(55-68) D		
(39-54) E		
(21-38) F		
(1-20) G		
<i>Not energy efficient - higher running costs</i>		
England, Scotland & Wales		EU Directive 2002/91/EC

Address: Spire View, SO15

