




# PHIL ABRAHART

POWERED BY  
**exp** UK

79 Jefferson Road,

£190,000

 3  1  2



Imagine finishing work, grabbing the dog lead or the kids' scooters, and within minutes finding yourself on one of Kent's award winning beaches, feeling the sea breeze and watching the sunset. This 3 bedroom mid terrace home tucked away in a no through road offers a fantastic opportunity for first time buyers, smaller families, or anyone wanting to be close to everything. Inside, you'll find a comfortable lounge off the entrance hall with a separate dining room perfect for family meals or entertaining, a modern kitchen with built in oven and hob, plus the bonus of a downstairs shower room. Upstairs offers two main bedrooms, a separate WC, and a third bedroom ideal as a nursery, home office, or dressing room. Backing onto a school and within walking distance of Sheerness High Street, the railway station, and local schools, convenience really is on your doorstep.

QUOTE PA1009

 07778 703 438  
 phil.abrahart@exp.uk.com  
 philabrahart.exp.uk.com



Phil Abrahart is an approved agent of eXp World UK Limited, trading as eXp UK, registered at 5 Churchill Place, 10th Floor, London, United Kingdom, E14 5HU. Company number 12016573. VAT no 327 4120 29. If you have instructed another agent to sell your house and instruct eXp World Ltd to sell your property at the same time, then you could be liable to pay both agents. It is recommended that you check the contract you have with your current agent.

# PHIL ABRAHART



- 3 Bedroom Mid Terrace house
- Lounge off the Entrance Hall plus a separate dining room
- BAND A Council Tax!!!
- Shower room downstairs but there's an additional W.C. Upstairs in bedroom 3
- Modern Kitchen with built-in oven and hob
- This part of Jefferson is a no through road so only residents would drive near here
- Local school right behind the garden
- Local convenience store, takeaway around the corner and the high street walking distance away
- Walk around the corner to the award winning beach
- QUOTE PA1009

## Jefferson Road, Sheerness ME12 2PX

Approximate Gross Internal Floor Area = 77.5 sq m / 834 sq ft

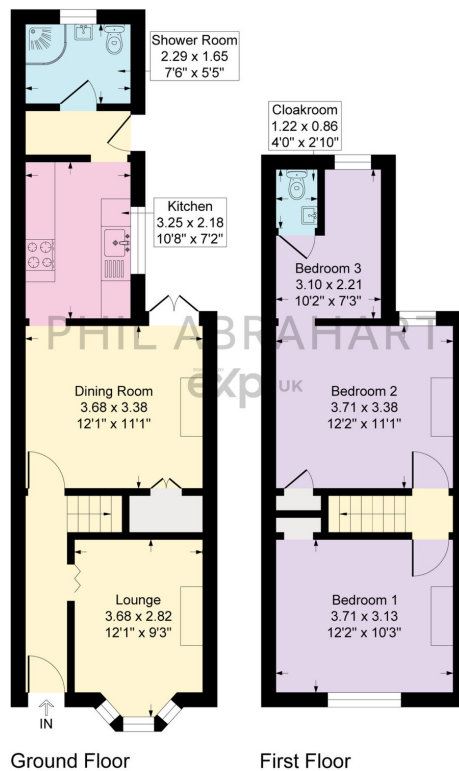


Illustration for identification purposes only, measurements are approximate, not to scale.