



Connells

Portland Close
Bedford



Property Description

Situated in a sought-after residential area in the northern part of Bedford, this well-presented three-bedroom detached family home offers spacious and versatile accommodation throughout, making it an ideal purchase for families and professionals alike.

The property is entered via a welcoming entrance porch which leads into a spacious hallway, creating an inviting first impression. To the right-hand side of the property is a generous lounge/diner, offering ample space for both relaxation and entertaining. Patio doors provide direct access to the rear garden patio area, allowing plenty of natural light to flow through the room.

To the rear of the property, the accommodation continues with a fitted kitchen and a practical utility area, providing additional storage and convenience for day-to-day living.

The first floor comprises three well-proportioned bedrooms, all offering comfortable living space, together with a family bathroom serving the accommodation.

Externally, the property benefits from a garage and ample off-road parking to the front. To the rear is a well-maintained garden, providing an excellent space for outdoor dining, entertaining, or simply enjoying the warmer months.

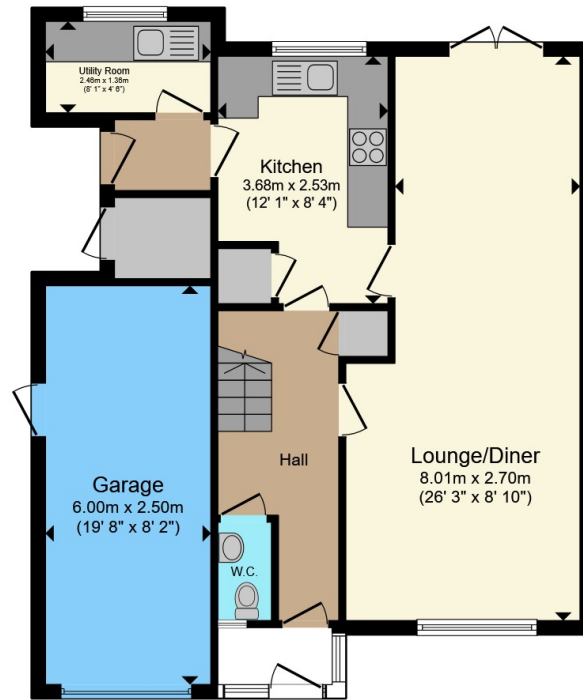
Conveniently located within easy reach of a range of local amenities, shops, and highly regarded schools, this attractive home also benefits from excellent transport links.

- Ground Floor
- Entrance Hall
- Cloakroom
- Lounge/Diner
- Kitchen
- Utility Room
- First Floor
- Landing
- Bedroom One
- Bedroom Two
- Bedroom Three
- Bathroom
- External
- Rear Garden
- Garage & Parking

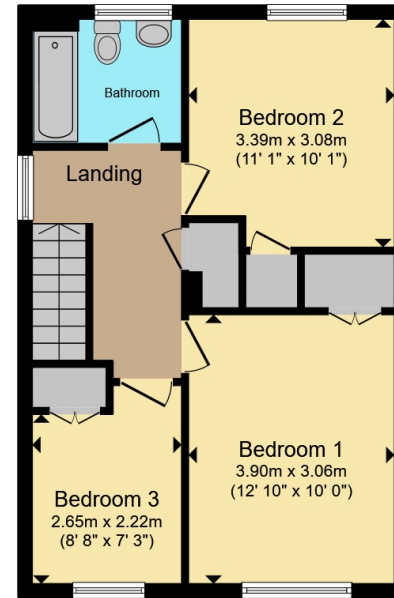








Ground Floor



First Floor

Total floor area 112.7 m² (1,213 sq.ft.) approx

This floor plan is for illustrative purposes only. It is not drawn to scale. Any measurements, floor areas (including any total floor area), openings and orientation are approximate. No details are guaranteed, they cannot be relied upon for any purpose and they do not form part of any agreement. No liability is taken for any error, omission or misstatement. A party must rely upon its own inspection(s). Powered by www.propertybox.io



To view this property please contact Connells on

T 01234 345 303
E bedford@connells.co.uk

42 Allhallows
 BEDFORD MK40 1LN

EPC Rating: Council Tax
 Awaited Band: D

Tenure: Freehold

view this property online connells.co.uk/Property/BED312913



1. MONEY LAUNDERING REGULATIONS Intending purchasers will be asked to produce identification documentation at a later stage and we would ask for your co-operation in order that there will be no delay in agreeing the sale. 2. These particulars do not constitute part or all of an offer or contract. 3. The measurements indicated are supplied for guidance only and as such must be considered incorrect. Potential buyers are advised to recheck measurements before committing to any expense. 4. We have not tested any apparatus, equipment, fixtures, fittings or services and it is in the buyers interest to check the working condition of any appliances.

Connells Residential is registered in England and Wales under company number 1489613, Registered Office is Cumbria House, 16-20 Hockliffe Street, Leighton Buzzard, Bedfordshire, LU7 1GN. VAT Registration Number is 500 2481 05.

See all our properties at www.connells.co.uk | www.rightmove.co.uk | www.zoopla.co.uk

Property Ref: BED312913 - 0002