

Property ref: 176644

Nightingale House, Reading, RG1 6LU

£1,450 PCM**HASLAM'S**
Lettings

Located in a convenient and well-connected area of Reading, this beautifully presented apartment in Nightingale House offers comfortable modern living ideal for professionals or couples. The property is thoughtfully laid out, providing bright and practical accommodation throughout, with easy access to Reading town centre and local amenities.

Reading Borough Council tax band C.

Available 10/02/2026

- Two double bedroom ground floor apartment
- Private patio; Fitted kitchen with appliances
- Quiet, well-maintained development; Gas central heating
- Allocated parking; Furnished
- Close to Reading town centre and train station
- EPC rating C; Managed by HASLAM'S

*Fees For Assured Shorthold Tenancies: when you rent a property from us you will be required to pay a sum equivalent to one weeks' rent for a holding deposit. Upon successful application, this amount will be off set against your first months' rent. You will also be required to pay a security deposit equivalent to 5 weeks' rent which will be held and protected in line with Deposit legislation. For more information about our fees please visit: www.haslams.net
Fees for all other tenancies (Non Housing Act Tenancies / Company Lets): when you rent a property from us we will charge you a one-off fee per property. This charge is the equivalent of 15 days of the monthly rental charge (+VAT) with a minimum fee of £450 (inc.VAT) up to a maximum of £650 (inc.VAT). Other fees may apply depending on your circumstances.

0118 960 1055**lettings@haslams.net www.haslams.net****Haslams Estate Agents Ltd, 159 Friar Street, Reading, Berkshire, RG1 1HE**

Water supply: Mains

Drainage info: Mains

Electricity supply: Mains

Gas supply: Mains

Broadband/Mobile Info: Connections available. For an indication of specific speeds and supply of Broadband and Mobile, we advise applicants go to the Ofcom website Broadband and Mobile Coverage Checker.

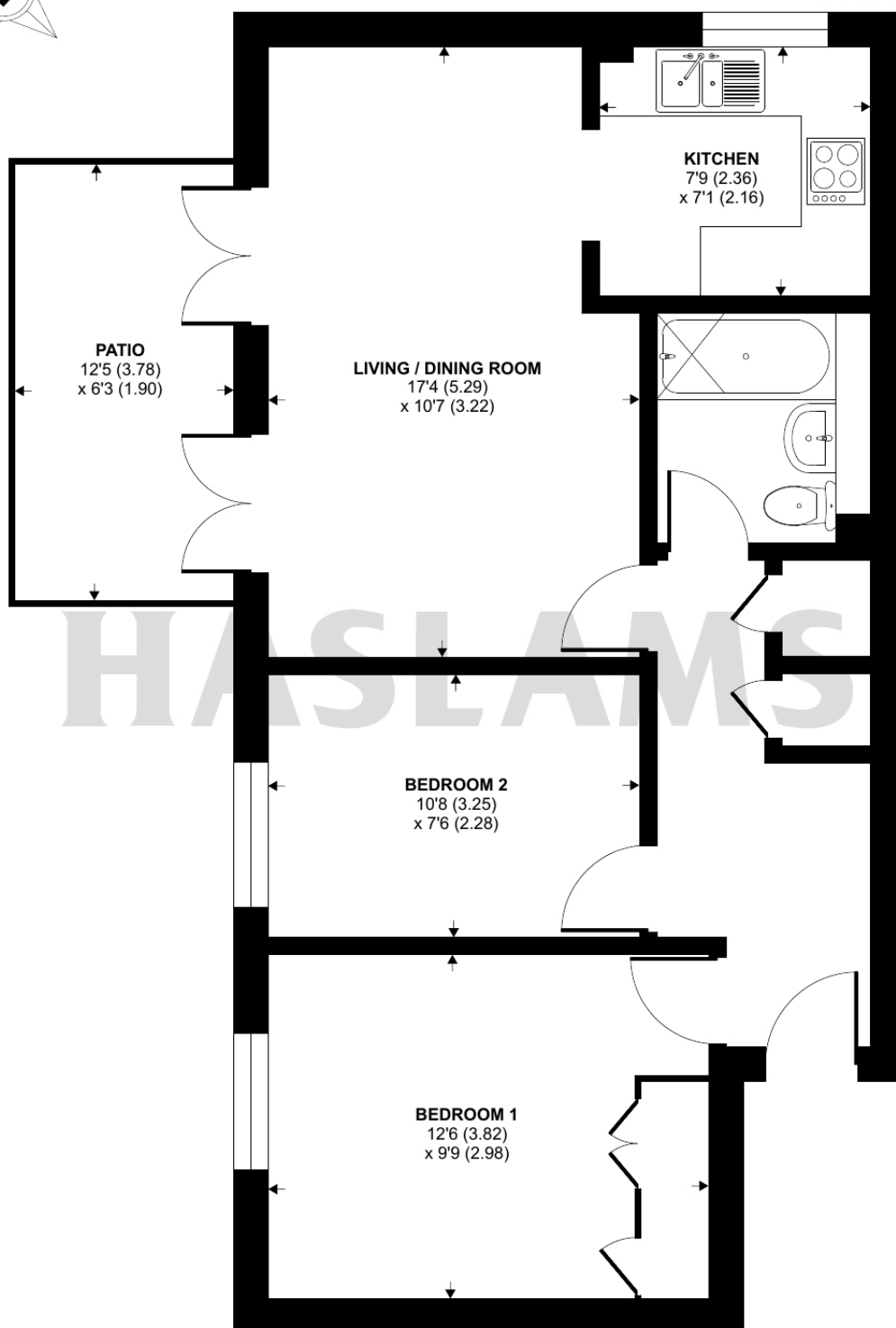




Coley Avenue, Reading, RG1

Approximate Area = 557 sq ft / 51.7 sq m

For identification only - Not to scale



GROUND FLOOR



Floor plan produced in accordance with RICS Property Measurement 2nd Edition, Incorporating International Property Measurement Standards (IPMS2 Residential). © n̄cheom 2026. Produced for Haslam's. REF: 1404347