



Anson Road, N7

£2,100 Per calendar month

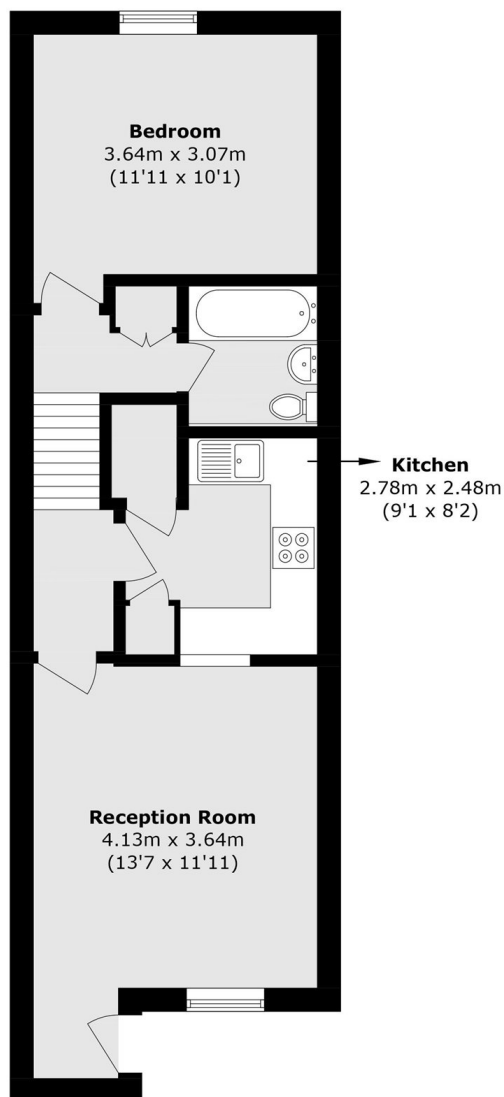
A one bedroom flat located in the heart of Tufnell Park. This property boasts a double bedroom with large windows throughout, white goods in the kitchen, a private front garden as well as hardwood flooring throughout.

Anson Road is located in the heart of Tufnell Park only a short walk from Tufnell Park Tube Station (Northern line) and Kentish Town Tube Station (Northern Line).

Features

- Double Bedroom.
- Hardwood Flooring
- Private Front Garden
- White Goods
- Local Amenities
- Great Transport Links

Anson Road, London, N7



Total area (approx.): 45.8 sq. m (492.9 sq. ft)