



FOR SALE

Mead Close, Belmont Street, Camden NW1

PRICE £650,000



4 Bedroom



Kitchen



1 Reception



1 Bathroom



Balcony



Parking Permit

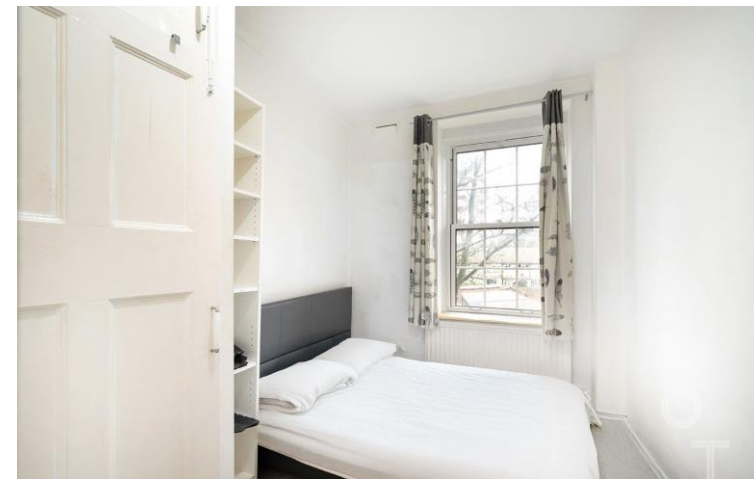
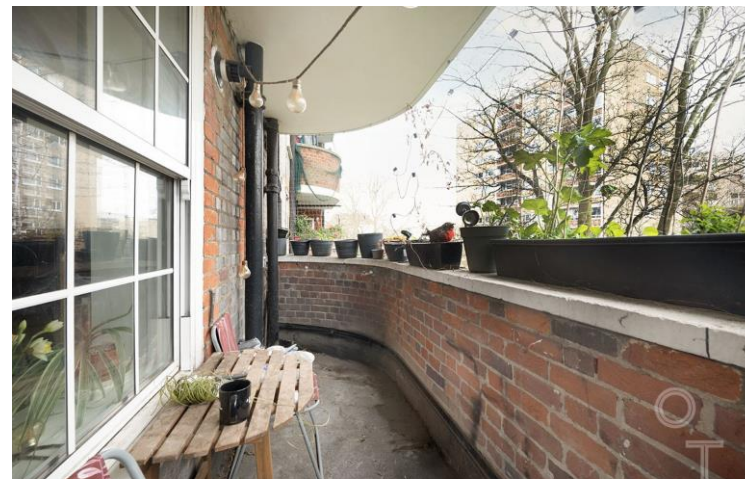
Mead Close, Belmont Street, Camden NW1

PRICE £650,000

A spacious and well-proportioned four-bedroom flat situated on the second floor of a purpose-built residential block in the heart of Camden.

The property offers a practical layout, comprising a bright and airy living room, a separate fitted kitchen, four well-sized bedrooms, and a family bathroom with an additional WC. The flat further benefits from a private balcony, providing valuable outdoor space.

Ideally located close to Camden, Chalk Farm, and Kentish Town, the property enjoys excellent access to local amenities and transport links, making it perfect for families or professional sharers.



**Mead Close,
Belmont Street, NW1
Approx. Gross Internal Area *932 Ft² - 86.65 M²**



Second Floor

Illustration For Identification Purposes Only. Not To Scale

* As Defined by RICS - Code of Measuring Practice

© Oliverstown Floorplans.

Tel : 020 7284 1222 , 020 7284 9987

Email : info@oliverstown.com

£ 650,000.00

4 Bedroom

Leasehold

1 Bathroom

London Borough of Camden

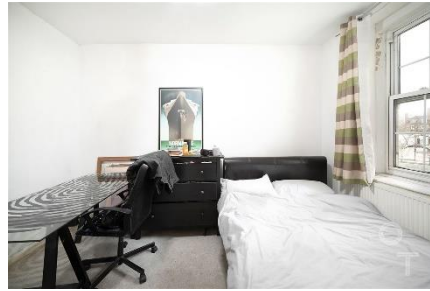
1 Reception

D Council Tax Band

Balcony

C EPC Band

Parking Permit



KENTISH TOWN | 189 Kentish Town Rd | London | NW5 2JU | T: 020 7284 1222 | hello@oliverstown.com

ASSOCIATED MAYFAIR | 121 Park Lane | London | W1K 7AG | T: 020 3368 8602 | hello@oliverstown.com