



**Colvestone Crescent, E8**

**£800,000**

**Dexters**



## Colvestone Crescent, E8

A two double bedroom split level Victorian conversion measuring over 1,000 sq ft in the heart of Hackney. Benefiting from its own private entrance the property has a spacious kitchen with room to dine, living room with feature fireplace, two bedrooms with built in wardrobes and two bathrooms. Original period features remain throughout and there is potential to extend into the loft, subject to planning. It is being sold chain free.

Benefiting from its own private entrance the property has a spacious kitchen with room to dine, living room with feature fireplace, two bedrooms with built in wardrobes and two bathrooms. Original period features remain throughout and there is potential to extend into the loft, subject to planning. It is being sold chain free.

Set on a quiet tree-lined no-through road within the St Mark's Conservation Area, this property has an enviable position. Ridley Road Market, Mare Street and Kingsland High Street are all moments away, offering an eclectic mix of independent cafés, acclaimed restaurants, stylish bars and everyday conveniences, including M&S. Excellent transport connections are within easy reach, with Dalston Kingsland and Dalston Junction less than a quarter of a mile away, while Hackney Downs is approximately half a mile distant, providing easy access across the City and beyond. The area is further enhanced by an abundance of green open spaces, with Hackney Downs Park nearby, while Colvestone is renowned for its popular Lido and vibrant weekend market is

### Features

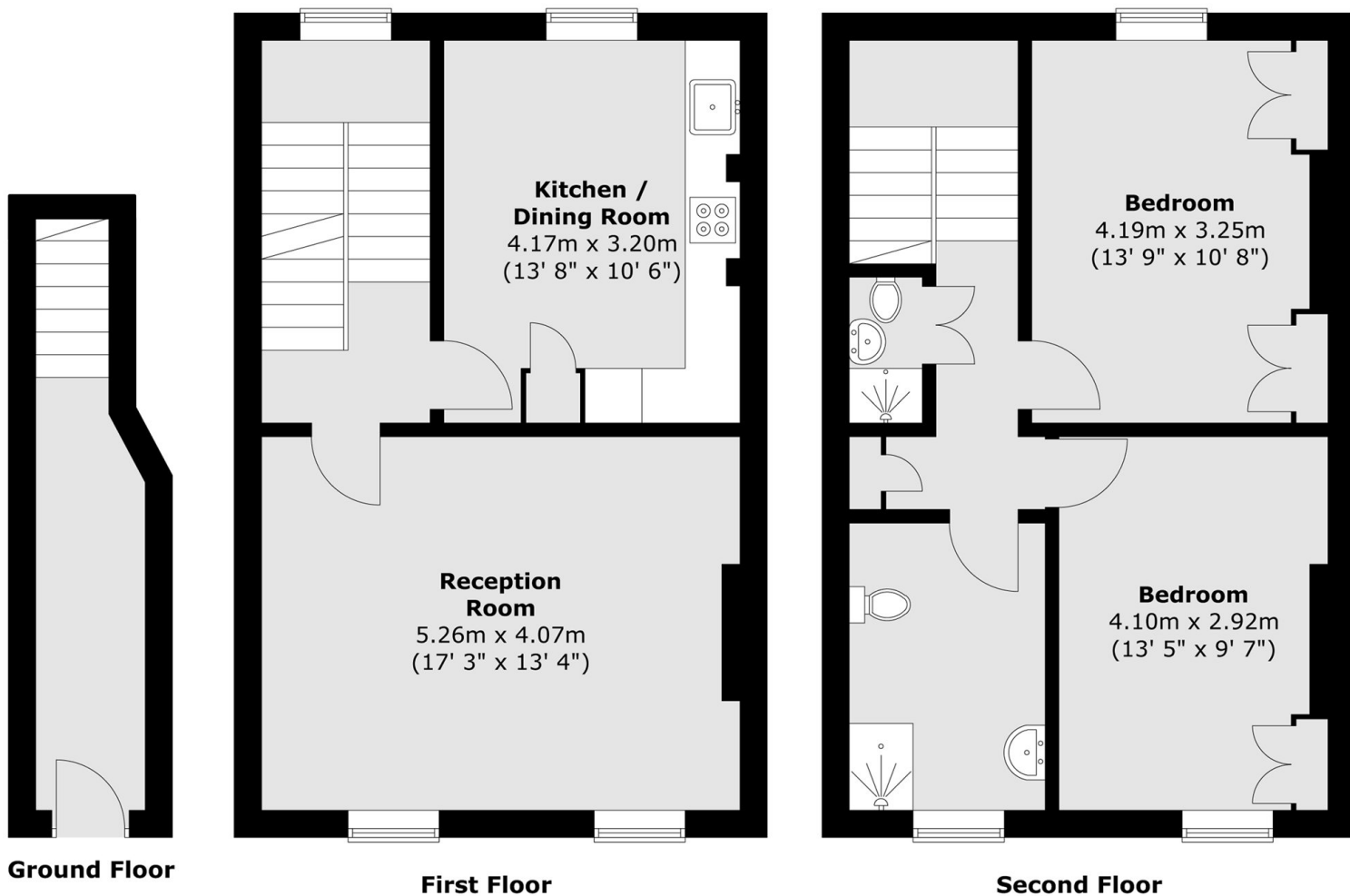
- Victorian Conversion
- Two Double Bedrooms
- Two Bathrooms
- Over 1,000 sq ft
- Private Entrance
- Potential To Extend, STPP







# Colvestone Crescent, London, E8



Total area (approx.) : 95.6 sq. m (1029 sq. ft)