

90 Oswald Road, Chorlton, Manchester, M21 9GB

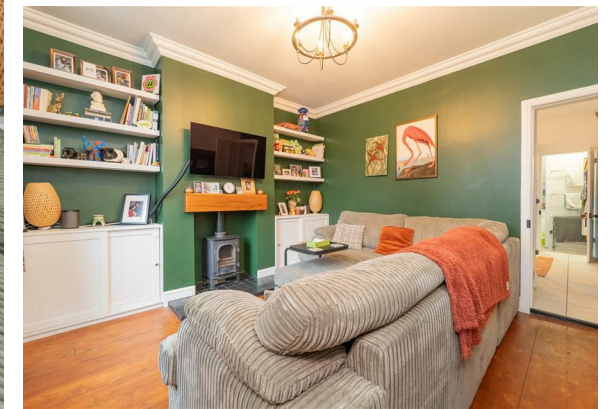


JP&Brimelow
ESTATE AGENTS

Offers In The Region Of £335,000




VIDEO TOUR AVAILABLE A stylishly presented TWO DOUBLE BEDROOM period mid-terrace home. Ideally located in central Chorlton just off Manchester Road, a short walk to a fantastic selection of nearby independent shops, bars and restaurants. The well-designed accommodation comprises a lounge, a fully fitted kitchen with practical utility storage, and a three-piece shower room with access to the rear, completing the ground floor. The first floor offers a landing leading to two double bedrooms. The property further benefits from gas-fired central heating, an enclosed front garden, and a courtyard-style garden to the rear. Ideally positioned close to Oswald Primary and St John's Primary schools, as well as the picturesque Longford Park, the property is also within easy reach of the Metrolink stations on Ryebank Road, Firswood and Wilbraham Road in Chorlton, providing direct access to Manchester city centre, Manchester International Airport and MediaCity. Early viewing is highly recommended to fully appreciate all this home has to offer.





EPC Chart

Energy Efficiency Rating		Current	Potential
<i>Very energy efficient - lower running costs</i>			
(92 plus) A			
(81-91) B			89
(69-80) C		69	
(55-68) D			
(39-54) E			
(21-38) F			
(1-20) G			
<i>Not energy efficient - higher running costs</i>			
England & Wales			EU Directive 2002/91/EC 



Tenure: **Freehold** Council Tax Band: **A**

Ground Floor



First Floor



JP & Brimelow Estate Agents Ltd
430 Barlow Moor Road, Manchester, M21 8AD
Tel: 0161 8822233
E: sales@jpbrimelow.co.uk www.jpandbrimelow.co.uk



JP & Brimelow
ESTATE AGENTS

NOTICE: JP & Brimelow Estate Agents Ltd for themselves and for the vendors or lessors of this property whose agents they are give notice that:

- (i) the particulars are set out as a general outline only for the guidance of intending purchasers or lessees, and do not constitute, nor constitute part of, an offer or contract;
- (ii) all descriptions, dimensions, references to the condition and necessary permissions for use and occupation, and other details are given in good faith and are believed to be correct but any intending purchasers or tenants should not rely on them as statements or representations of fact but must satisfy themselves by inspection or otherwise as to the correctness of each of them;
- (iii) no person in the employment of JP & Brimelow Estate Agents Ltd has any authority to make or give any representation or warranty whatever in relation to this property.

jpandbrimelowstateagents

@jpandbrimelow